

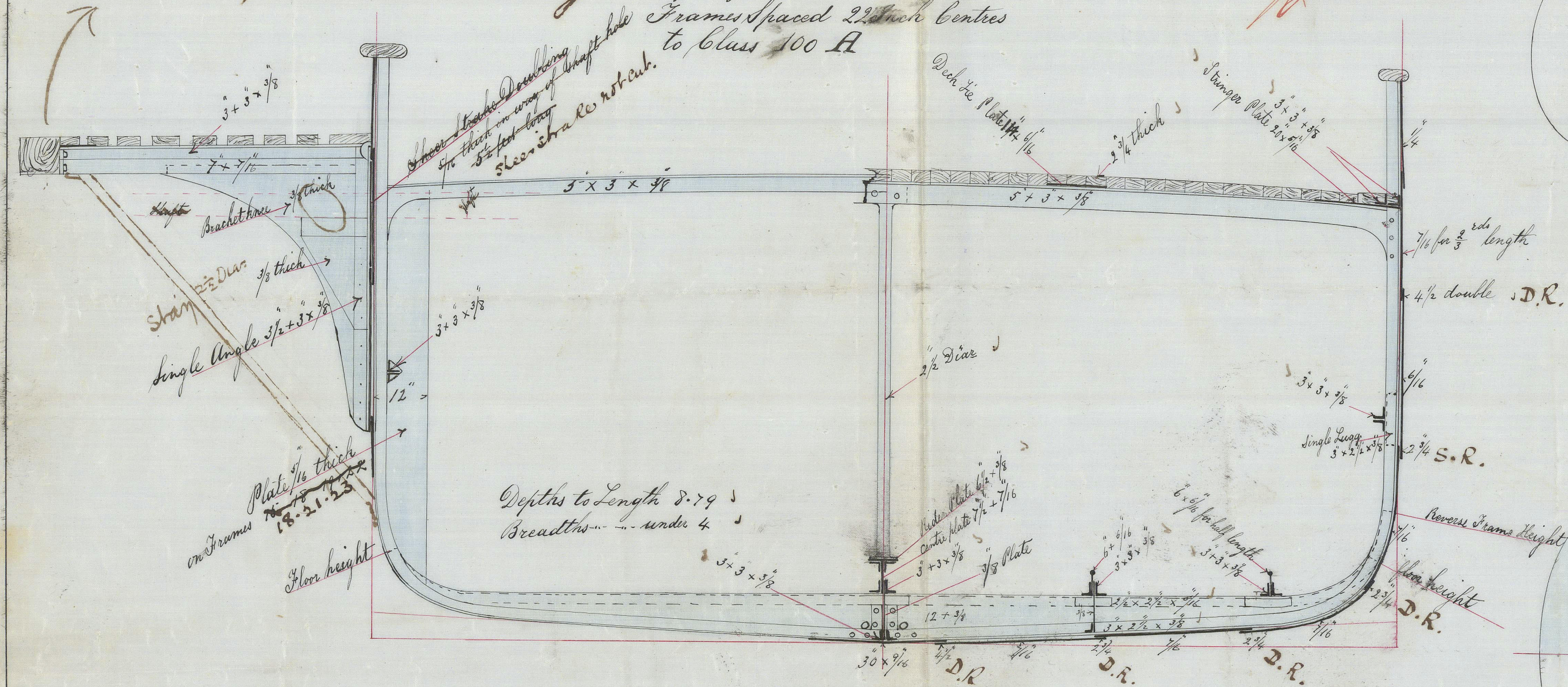
R/10/46

Midship Section  
Paddle Steamer No 20  
Scale 1/2 Inch = 1 foot

Dimensions  
Length of keel & Fore Rake 80.0  
Breadth moulded 19.10  
Depth of Hold to Floors 8.0  
Frames Spaced 22 inch centres  
to Class 100 A

Rev 80/9/76

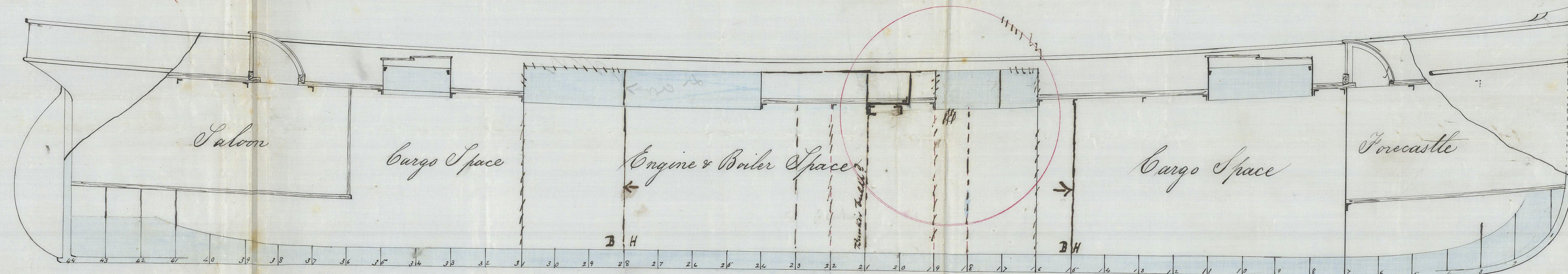
Note: Chapt to have no water draining



Depth to Length 8.79  
Breadth under 4

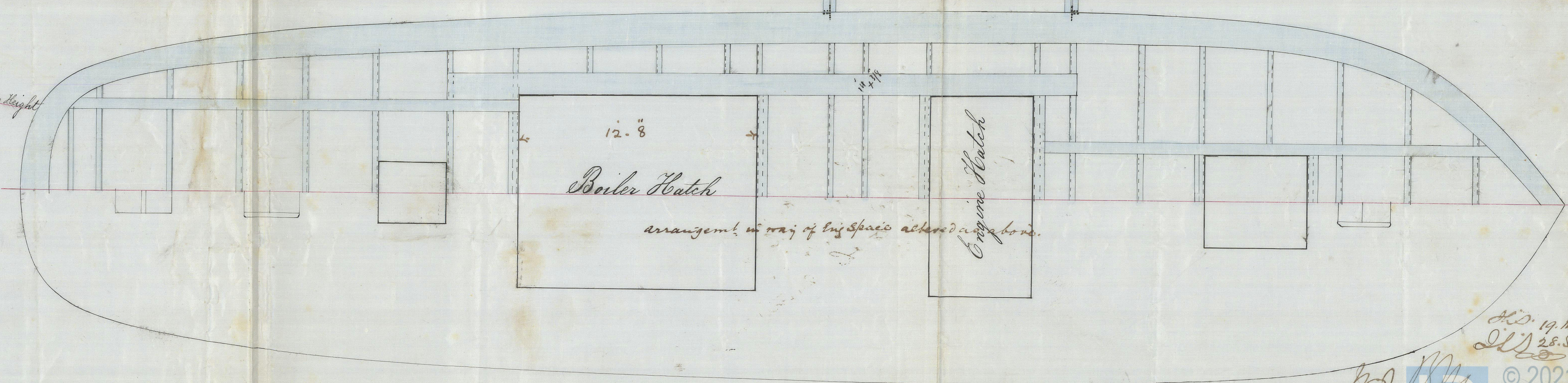
Half Girth 17.1  
Beam 9.91  
Whole Depth 9.0  
56.01  
70.16  
31.606  
3.601  
324.09  
252.07  
2850.5816

Paddle Steamer "Laffrard" Dundee Sept No 4057



Longitudinal Section & Beam Plan  
P.S. No 20  
Scale 1/4" = 1 foot

from Mr. B. Thompson  
Ship Builder &c  
Dundee  
September 26-1876



Boiler Hatch

arrangement in way of this space altered as above.

Engine Hatch

Rev 19 May 77  
Rev 28 Sep 77  
Rev 21 Oct 76