

San. Sr. "Ferndale" Report No. 11.660.

S.S. No 225

Scale 1/2" = 1 foot

Per 11/12/76 4 20/12/76

Class 90 A

Proportions

exactly 12 depths in length ✓
above 6 Breadths in length ✓

Length as per rule 210'-0"
Raised Quarter Deck
Waterballast in Fore & Main Holds
Sof. gallant Forecastle

210 x 30 1/2 ex. x 1/6 depth Hold

1/2 Girth 29.60 ✓
1/2 Breadth 15.18 ✓

Depth 14.50 ✓

ful 62.28 ✓

62.28 x 210 = 130788 ✓

Hatches to be made as shown on
Tracing B

Rule 44 x 9/16 ex. 58 x 8/16
Stringer 24 x 7/16
Angles 4 1/2 x 3 1/2 x 7/16

Beams 5 x 3 x 7/16
Angles 5 x 3 x 7/16
on every frame.
Iron deck 9/16 all fore and aft

No. for Outfit 14386 ✓
2 Bowers 18 cut ✓
1 " 15 1/4 " ✓
1 Stream 8 " ✓
1 Kedge 4 " ✓
1 " 2 " ✓
Chain 1 1/6 240 fathoms ✓

Top plate 7/16 x 8 1/2 wide efficient gusset plates to be fitted at ends

Stringer 28 x 8/16
ends 22 x 7/16
Angles 3 1/2 x 3 1/2 x 7/16

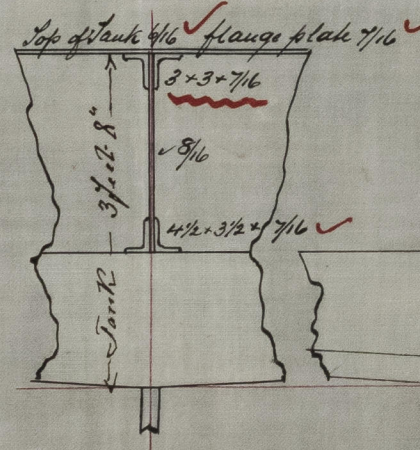
Skim plates also

For Spacing Frames Plating No. not to exceed 13.100

Frames 4 x 3 x 7/16 for 3/8 length spaced 22 apart ✓
" 4 x 2 x 7/16 before & abaft 3/8 length ✓
Reverse frames 3 x 3 x 7/16 to main & lower stringer ably ✓
Keel 8 x 2 3/8

Stem post 7 x 4 3/4. Stem 7 x 2 3/8
Bulkheads 6/16
Rudder head 5" shell 3 ✓

Pillars extending to upper deck 3/4 ✓



Rider plate 9 x 10/16
Angles 4 1/2 x 3 1/2 x 7/16
13 x 10/16 double straps keel rivetted
Angles 4 1/2 x 3 1/2 x 7/16

Floor 18 x 9/16 9/16 through Engine & Boiler Room
Moulded at 11/4 = 9 1/4

outside of keel 4 1/2 x 7/16

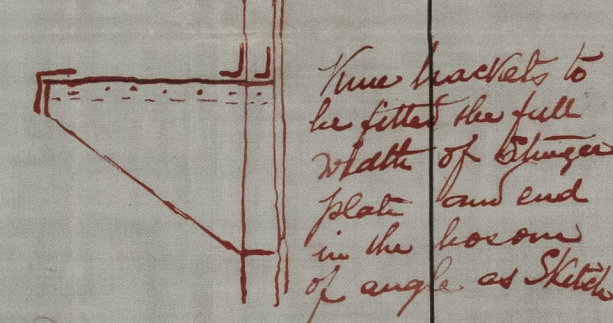
Garboard 32 x 7/16 only forward 3/4
Keel 8 x 2 3/8

Angles 4 1/2 x 3 1/2 x 7/16 no reduction at ends

Built 7 1/2 x 7/16 for 1/2 length
Angles 4 1/2 x 3 1/2 x 7/16

double 4 1/2 from keel to keel
To have one Strake in Bridge 9/16 for 1/2 length

if under 13.100 two Strakes
Butts keel rivetted 1/2 length
Straps 10/16 & 9/16



1800
12/11/76