

28/9/76

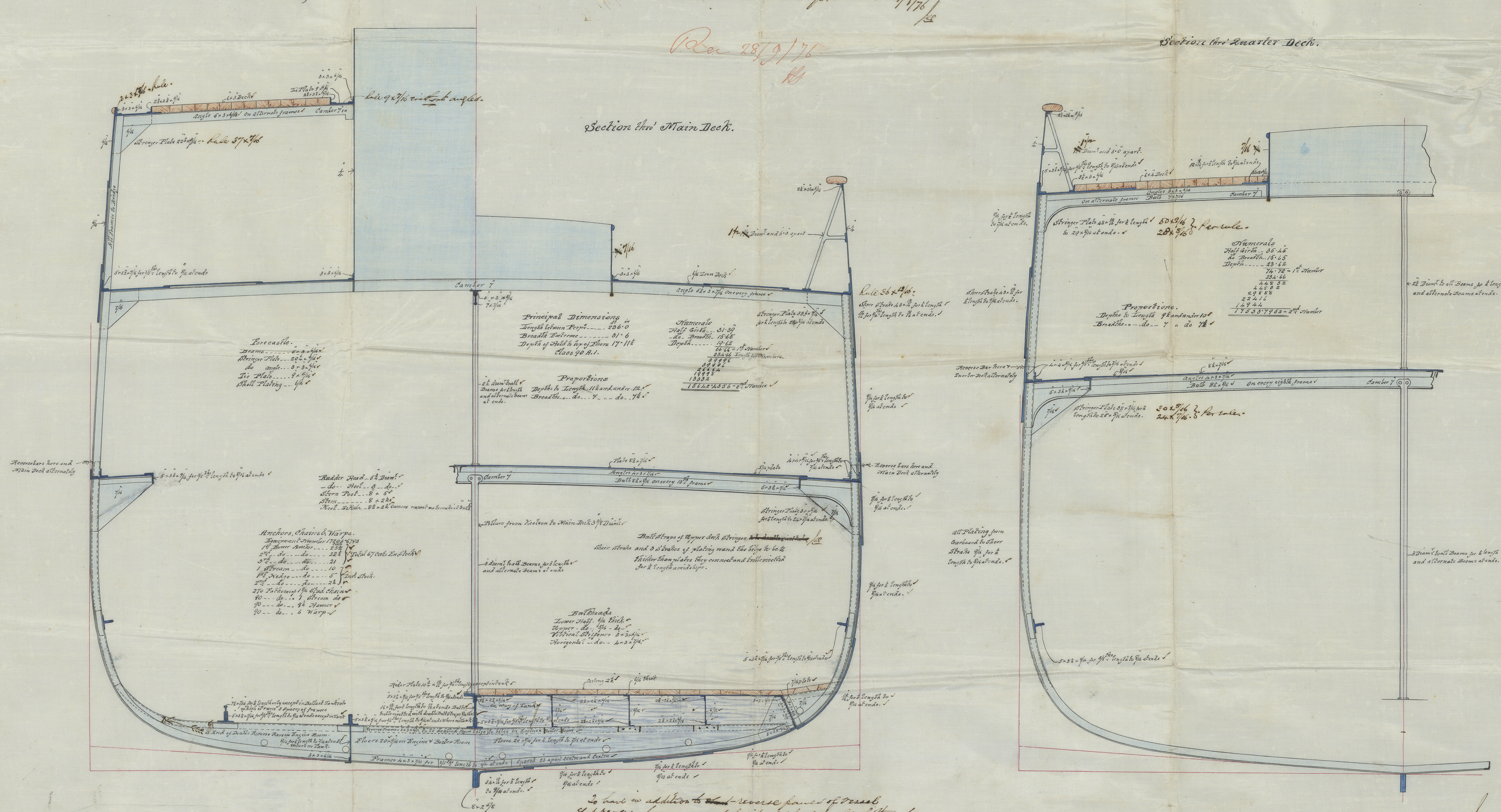
## 94

**SCALE  $\frac{1}{2}$  INCH = 1 FOOT**

See Sunderland & Surgeon's Letter 27/9/76

Section thro' Engine Room.

Section thro' Quarter Deck.



I have in addition to ~~some~~ reverse panels of brass  
shot reverse bars in way of longitudinal & double bottom to  
secure the latter more especially to floors. The longitudinal are also  
to pass through the ~~gun~~ & ~~down~~ bulkheads and rest to  
terminate abruptly at the bulk heads -

RM  
25/9/76