

2/10/26

L.S. "Bonnie Dundee"

Dundee Rept. h. 4042.

— MID-SECTION.—

— “S.S.” N° 80. —

SCALE: $\frac{3}{4}$ IN = 1 FOOT.

-Dimensions.-

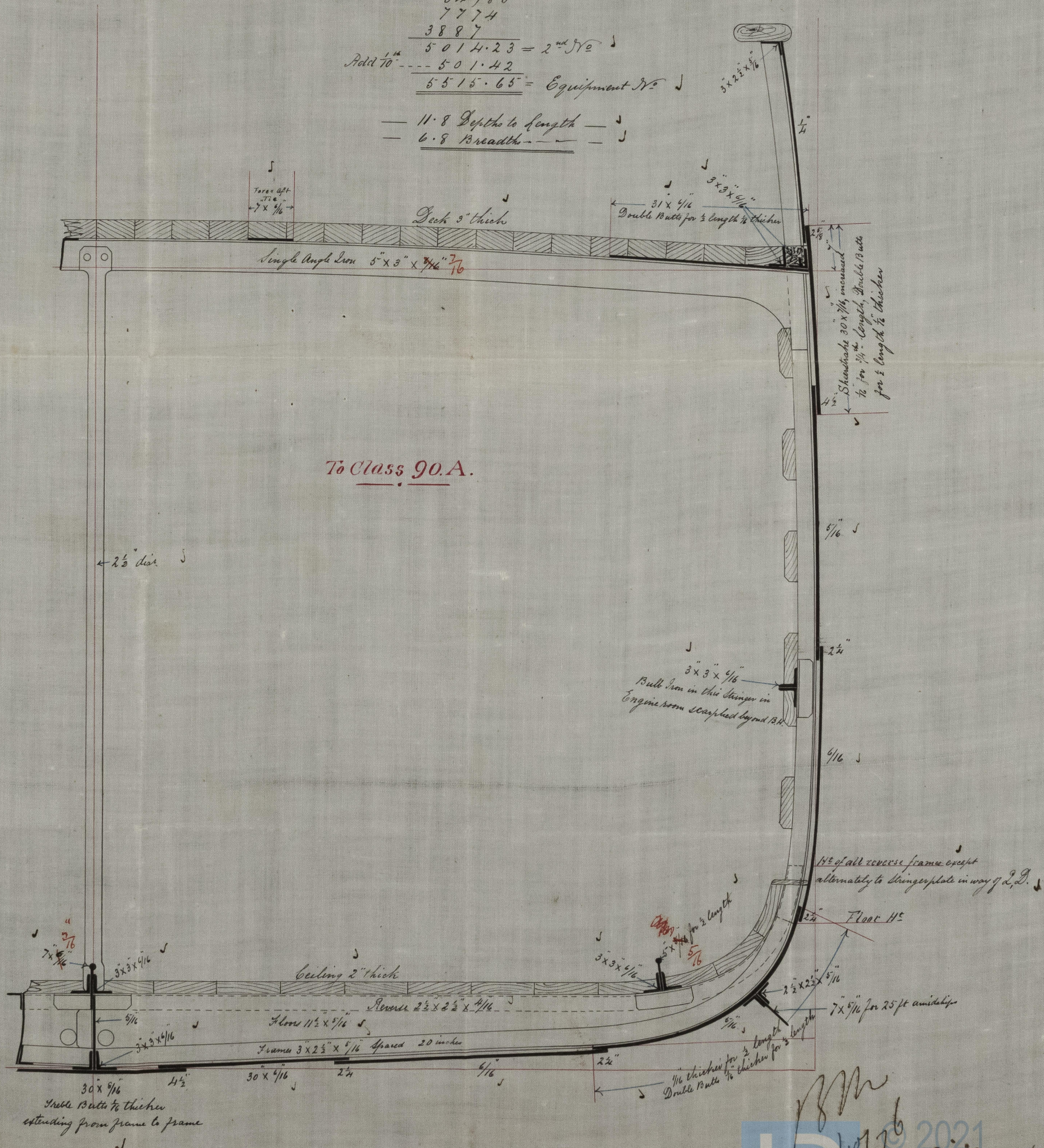
Length of Keel & Tonnage	130' 0"
Breadth Moulded	19' 0"
Depth — — —	10' 6"
— in Hold (top of keeling)	9' 9"

Rec 30/9/96
D

Half Girth ----- 18.5 ✓
 --- Beam ----- 9.5 ✓
 Whole Depth ----- 10.87 ✓
 38.87 = 14 No.
 Length ----- 129.
 2100

$$\begin{array}{r} 3887 \\ 5014.23 = 2^{nd} \text{ No.} \\ \text{Add } \frac{1}{10} = 501.42 \\ \hline 5515.65 = \text{Equipment No.} \end{array}$$

— 11.8 Depth to length — J
— 6.8 Breadth — — — J



To Class 90.A.