

21/12/75
25/3/76

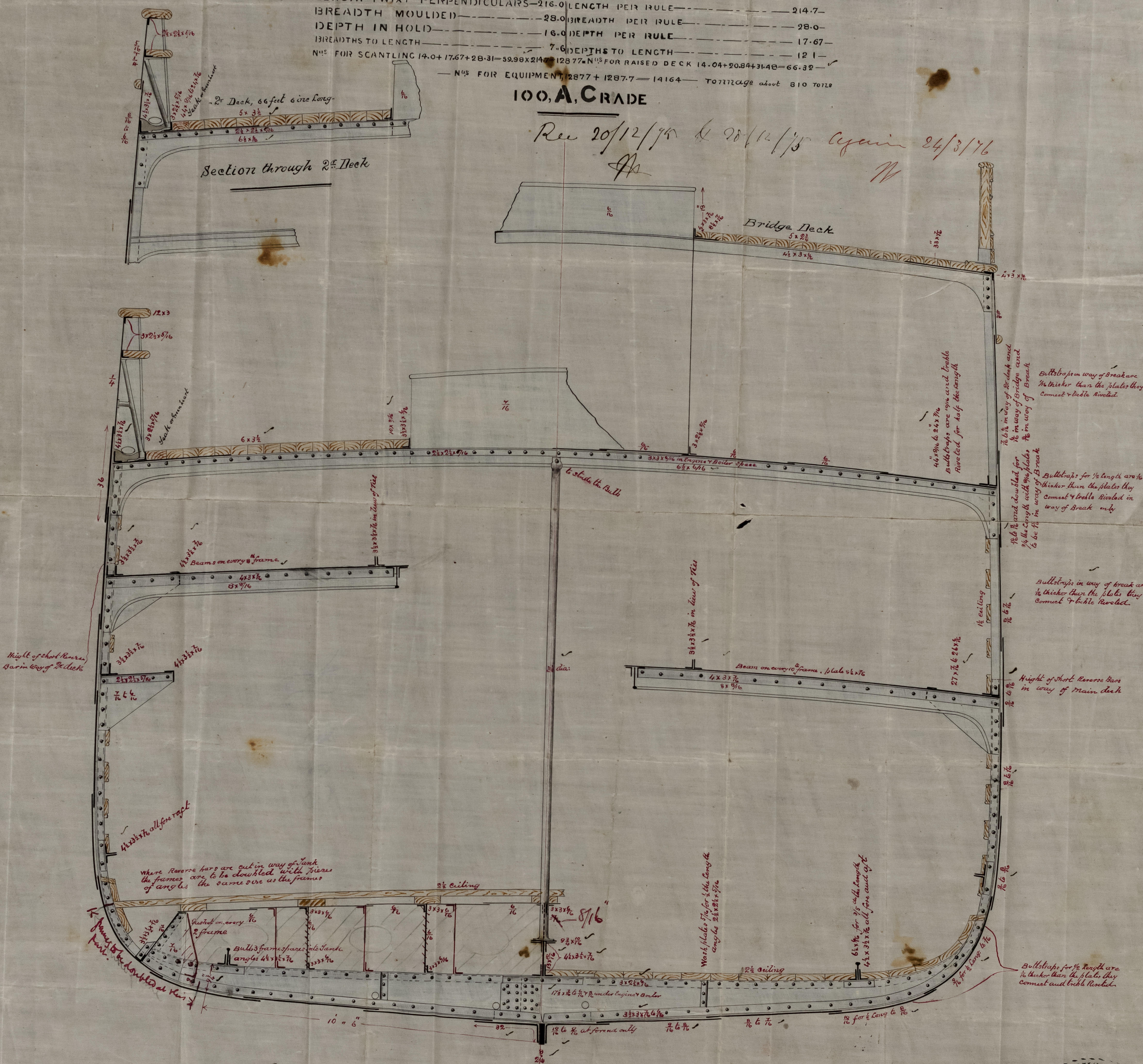
MIDSHIP SECTION
OF
S.S. N^o 203
DIMENSIONS

S.S. "Petrel" Report No. 2947.

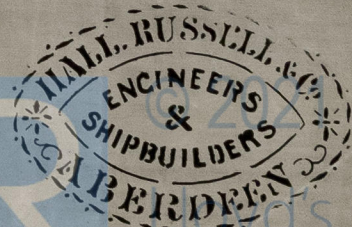
| | |
|--|---|
| LENGTH TWIXT PERPENDICULARS—216.0 | LENGTH PER RULE—214.7 |
| BREADTH MOULDED—28.0 | BREADTH PER RULE—28.0 |
| DEPTH IN HOLD—16.0 | DEPTH PER RULE—17.67 |
| BREADTHS TO LENGTH—7.6 | DEPTH TO LENGTH—12.1 |
| N ^{os} FOR SCANTLING 14.0+17.67+28.31=59.98x214.7=12877.7 | N ^{os} FOR RAISED DECK 14.04+20.84+31.48=66.32 |
| N ^{os} FOR EQUIPMENT 12877+1287.7=14164 | Tonnage about 810 TONS |

100. A. GRADE

Rec 20/12/75 & 20/12/75 again 24/3/76
H



SCALE 1/2 INCH TO ONE FOOT



IRON 519-0093

S.S. "Petrel"
Abn Report 2947.
Hall Russell res 203.

27/12/12
22/1/13

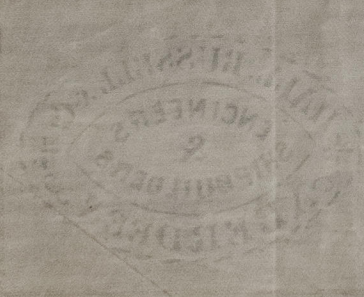
Iron 175-84

IRON 519-0093

IRON 519-0093
H 203



SCALE 1/2 INCH TO ONE FOOT



20/1/13
21/1/13
22/1/13

