

Rev. 28/12/75 & 7/1/76 & 14/1/76

DIMENSIONS

LENGTH BETWEEN PERPENDICULARS	<u>117</u>	<i>ft</i>
BREADTH EXTREME	<u>26</u>	
DEPTH IN HOLD	<u>15-25</u>	
TONNAGE	<u>320</u>	<i>of 1855</i>
TONNAGE REGISTER	<u>299</u>	<i>1852</i>

Numerals for Scanlings Class 100A.

Half moulded Breadth _____ 12.95

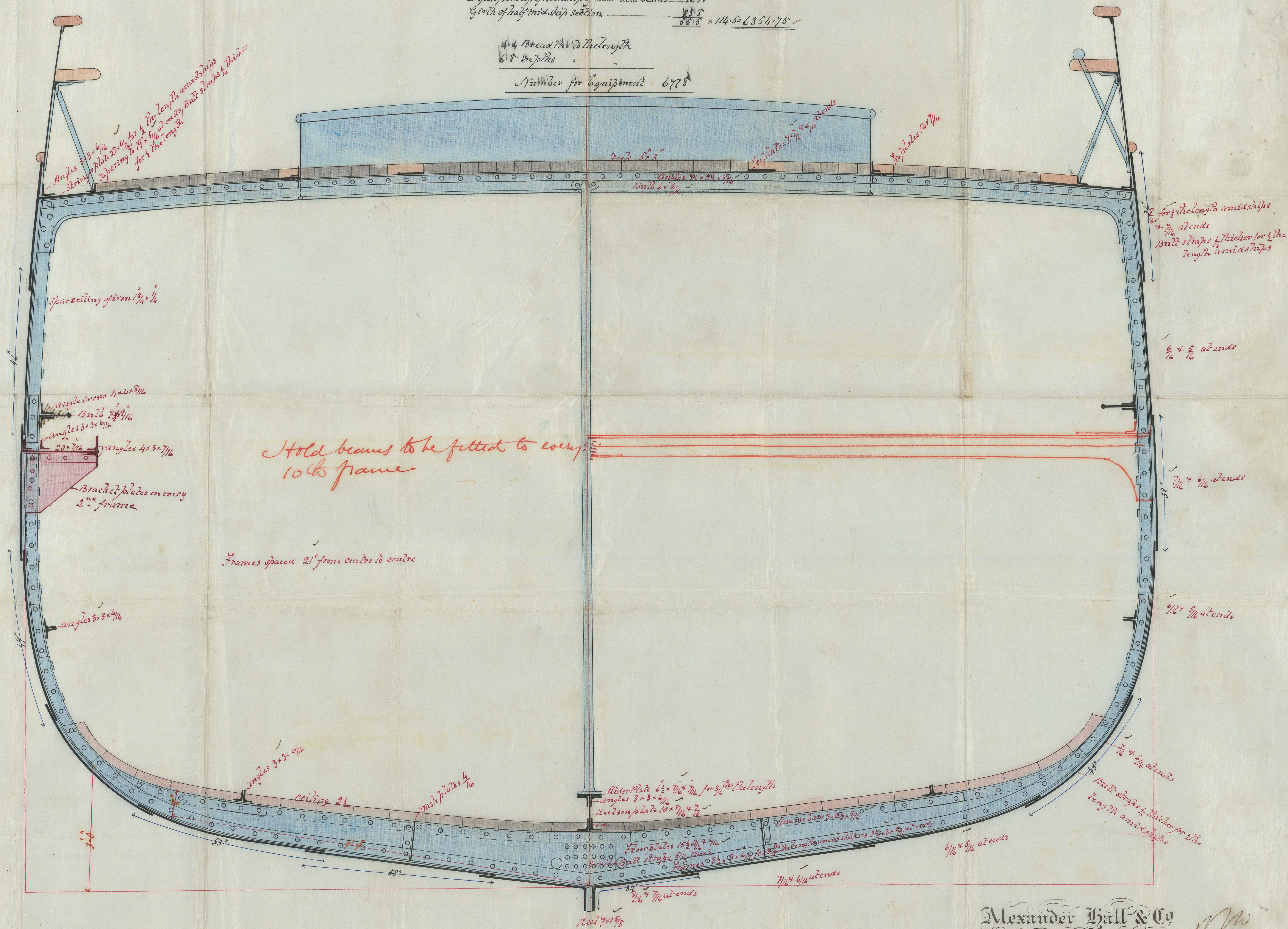
Depth from top of Keel to top of Main deck beams 16.75

Girth of half mid strip sections $\frac{25.8}{55.5} \times 114.5 = 6354.75$

4 4 Bread 7/10 to the length

68 Depths 2

Number for Equipment 6478



SCALE $\frac{3}{4}$ INCH TO A FOOT

Alexander Hall & Co
Shipbuilders.
ABERDEEN

ABERDEEN

IRON 516-0038