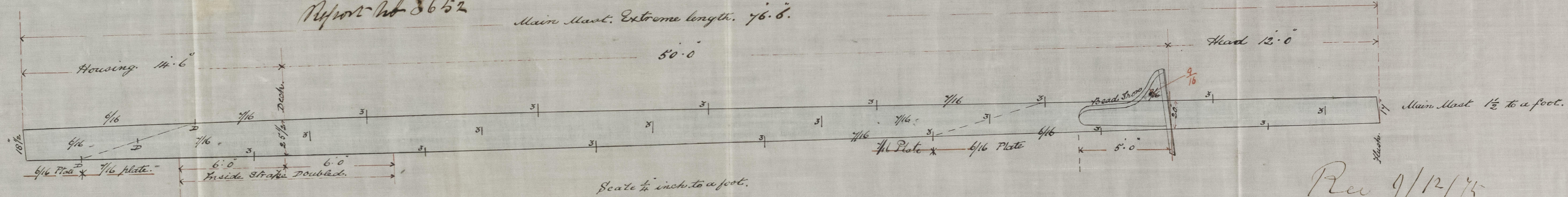


10/12/75

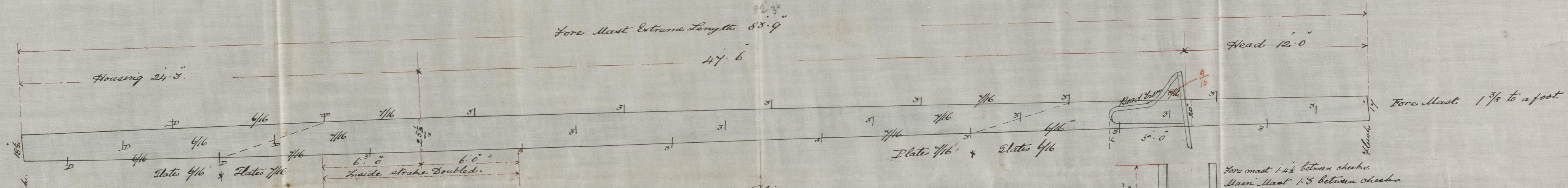
S.S. "Malaga"
Report No 8652

Main Mast. Extreme length. 76.6.



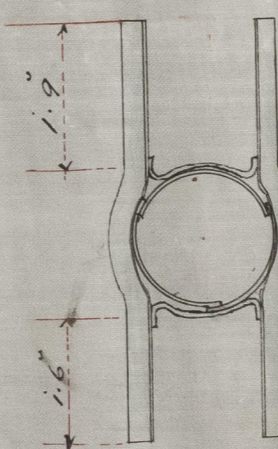
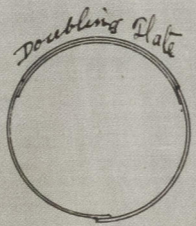
Rev 9/12/75

Fore Mast Extreme Length 88.9



No. 155. Ship.

- ✓ Masts 3 plates in the round. Seams double rivetted.
- ✓ 3/4 rivets in 7/16 plates Edges Chipped fair & caulked.
- ✓ Inside Strake doubled in way of Deck.
- ✓ Heel & Head cut to shape of Mast.
- ✓ Buttstraps 1/16 thicker than the Plates they connect.
- ✓ Luffe straps 15 inches wide Double 10 1/2 inches.
- ✓ all Iron used in the construction of Masts to stand a tensile strain of 20 Tons to the square inch.



Fore mast 1 1/2 between cheeks.
Main Mast 1 3/8 between cheeks.
Trussel tree set to shape of Mast.
Cheek Plates 7/16.

W. GRAY & Co
IRON SHIPBUILDERS

REPAIRERS
WEST HARTLEPOOL

18M

10/12/75

10/12/75

IRON 516-0020

Lloyd's Register
Foundation