

S.S. No 298 S.S. "Suez" - Report No 1007.

Scale $\frac{1}{2}$ " = one foot

16.2/74

1/2" iron deck 6" thick
without diagonals

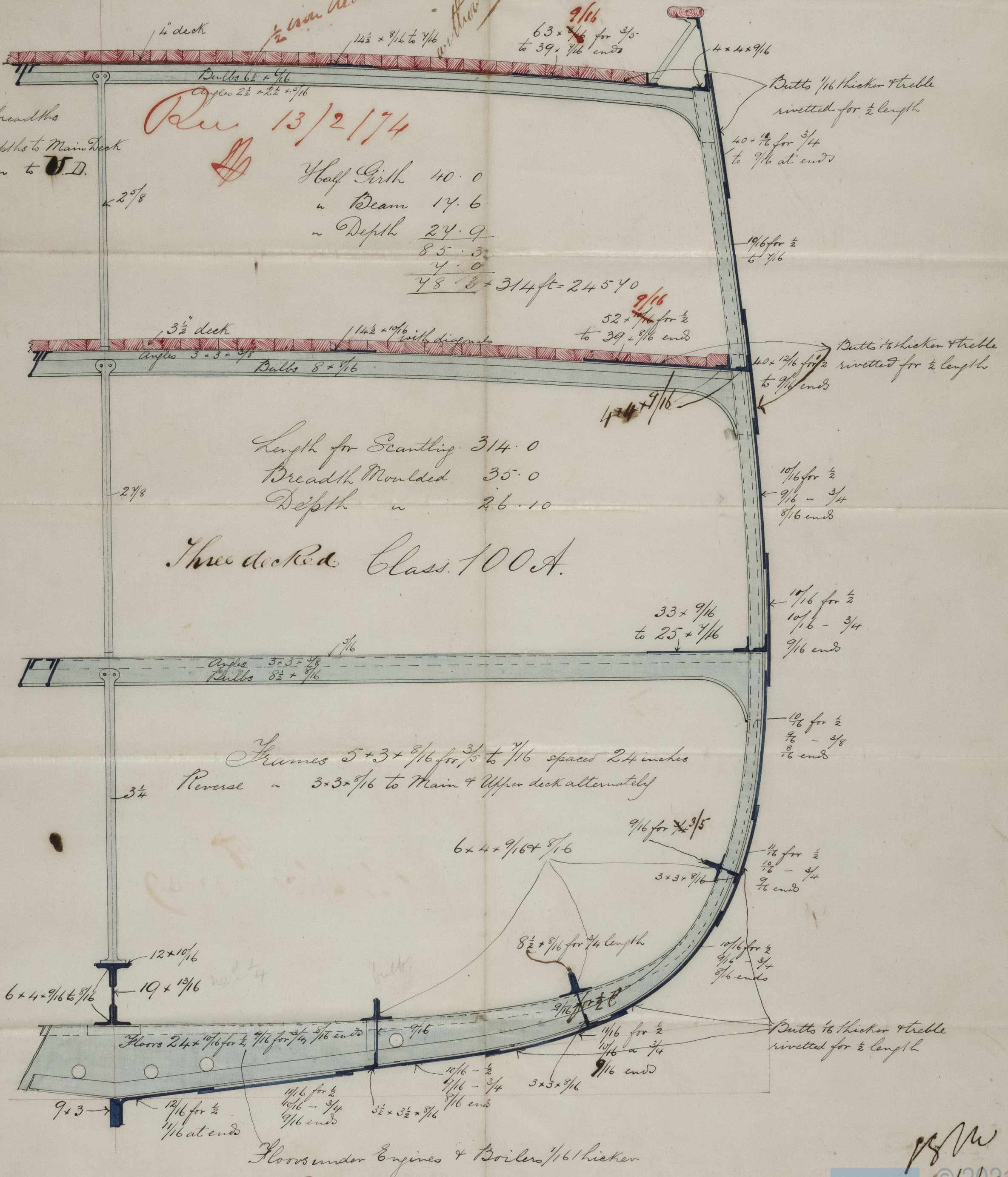
Under 9 breadths
Under 16 depths to Main Deck
in 12 in to U.D.

Rev 13/2/74

Half Girth 40.0
" Beam 14.6
" Depth 24.9
85.3
4.0
48.3 + 314 ft = 245.40

Length for Scantling 314.0
Breadth Moulded 35.0
Depth " 26.10

Three decked Class 100A.



Floors under Engines & Boilers 1/16" thicker

9.2.8