

Side View of Box

S.S. "Kate Hancock"

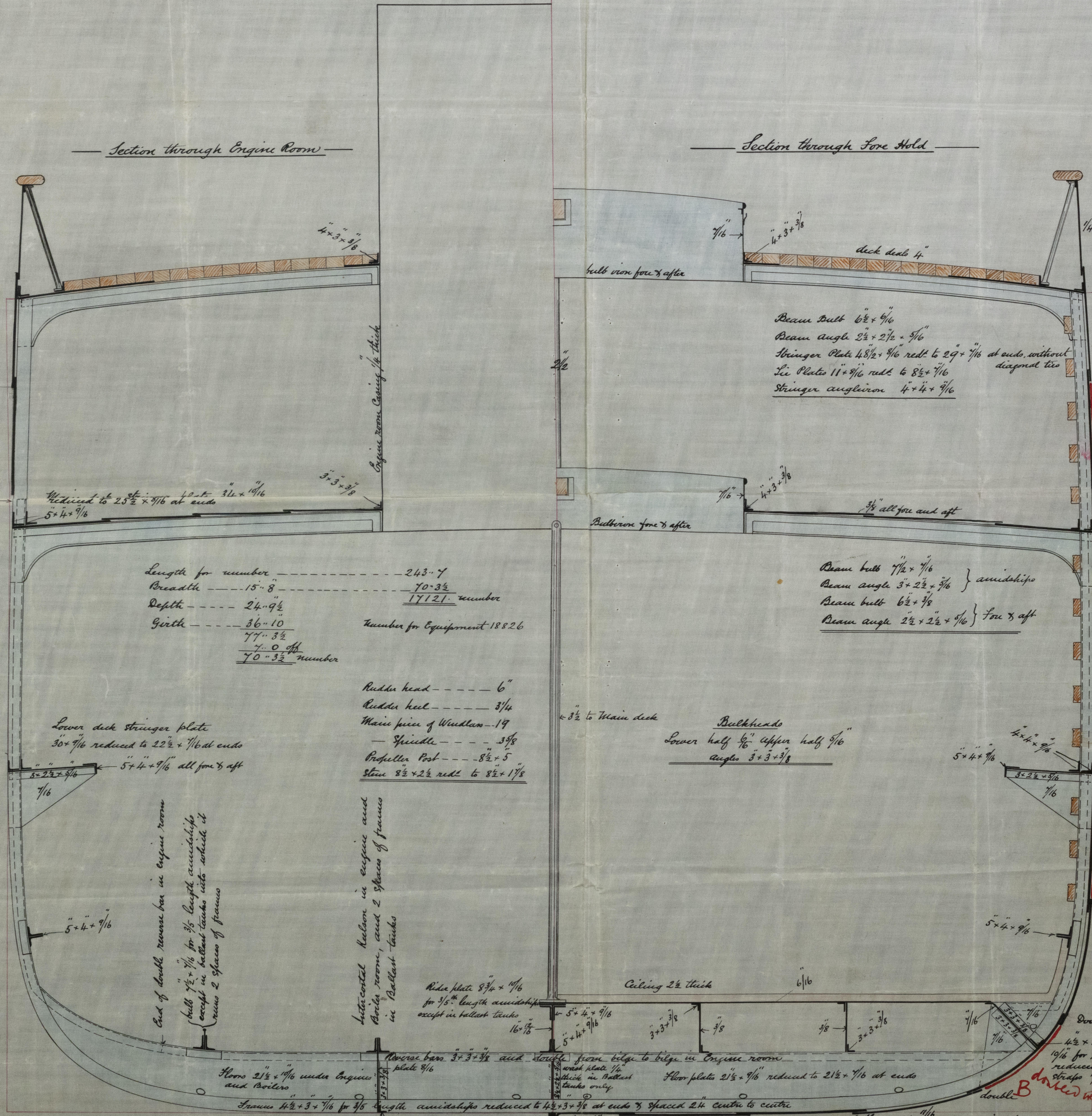
Report No. 3611

No 52 S.S.

Length D.P. 245' 0"
Beam Extreme 31' 6"
Beam Moulded 31' 4"
Depth of Hold to Floors 23' 0" & 15' 9"
Depth Moulded 23' 9 1/2" & 16' 9 1/2"
Scale 1/2" = 1 foot

Section through Engine Room

Section through Fore Hold



Length for number 243' 7"
Breadth 15' 8" 70' 3 1/2"
Depth 24' 9 1/2" 17121' number
Girth 36' 10" 77' 3 1/2"
70' 3 1/2" number
Number for Equipment 18826

Rudder head 6"
Rudder keel 3 1/4"
Main piece of Windlass 19"
Spindle 3 3/8"
Propeller Post 8 1/2" x 5"
Steer 8 1/2" x 2 1/2" red to 8 1/2" x 1 7/8"

Lower deck stringer plate
30' x 7/16" reduced to 22 1/2" x 7/16" at ends
5' x 4" x 7/16" all fore & aft

End of double runner bar in engine room
bull 7 1/2" x 7/16" for 3/4 length amidships
except in ballast tanks into which it
runs 2 spaces of frames

Intercooled Nelson in engine and
boiler room, and 2 spaces of frames
in Ballast tanks

Ride plate 8 3/4" x 10/16"
for 1/5 length amidships
except in ballast tanks

Floors 2 1/2" x 7/16" under engine
and boilers

Frames 4 1/2" x 3" x 7/16" for 3/4 length amidships reduced to 4 1/2" x 3" x 7/16" at ends & spaced 24" centre to centre

36' x 19/16" double 19/16" double 9/16" double for 1/2 length amidships
reduced to 9/16" in way of Ballast tanks
and 9/16" at ends

Beam Butt 6 1/2" x 7/16"
Beam angle 2 1/2" x 2 1/2" x 7/16"
Stringer Plate 4 1/2" x 7/16" red to 2 9/8" x 7/16" at ends, without
diagonal ties
Lee Plates 11" x 7/16" red to 8 1/2" x 7/16"
Stringer angle iron 4" x 4" x 7/16"

Beam butt 7 1/2" x 7/16"
Beam angle 3" x 2 1/2" x 7/16" } amidships
Beam butt 6 1/2" x 7/16"
Beam angle 2 1/2" x 2 1/2" x 7/16" } fore & aft

Bulkheads
Lower half 1/2" upper half 7/16"
angle 3" x 3" x 7/16"

40' x 7/16" reduced to
7/16" at ends with
butt straps 7/16" x
triple riveted for 1/2 length
Double

Doubles with 8 7/16" all fore and aft.

9/16" reduced to 7/16" at ends

Double
40' x 7/16" reduced to
7/16" at ends with butt
straps 1 1/2" x triple riveted
for 1/2 length

Double
9/16" for 1/2 length amidships
reduced to 9/16" at ends

Double, single at ends
19/16" reduced to 9/16" at ends

Double, single at ends
doubled with 9 7/16" plate for 1/2 length
amidships
9/16" reduced to 9/16" at ends

Double for 1/2 length, single at ends

9/16" for 1/2 length amidships
reduced to 9/16" at ends with
butt straps 1 1/2" for 1/2 length
triple riveted 7/8" rivets in butt straps

Double
4 1/2" x 3" x 7/16"
19/16" for 1/2 length amidships
reduced to 9/16" at ends with butt
straps 7/16" for 1/2 length, triple riveted

Double with 9 7/16" plate for 1/2 length
amidships
19/16" for 1/2 length amidships
reduced to 9/16" at ends &
to 9/16" in way of Ballast tanks
with better triple riveted for 1/2 length

The alterations in P.D. are
not carried out the class remaining 20' x 1' 8 1/2" x 1 1/4"

19/16" for 1/2 length amidships
reduced to 9/16" at ends &
to 9/16" in way of Ballast tanks
with better triple riveted for 1/2 length