



4/9/75

S.S. "Lady Aida"
Report - No. 3585

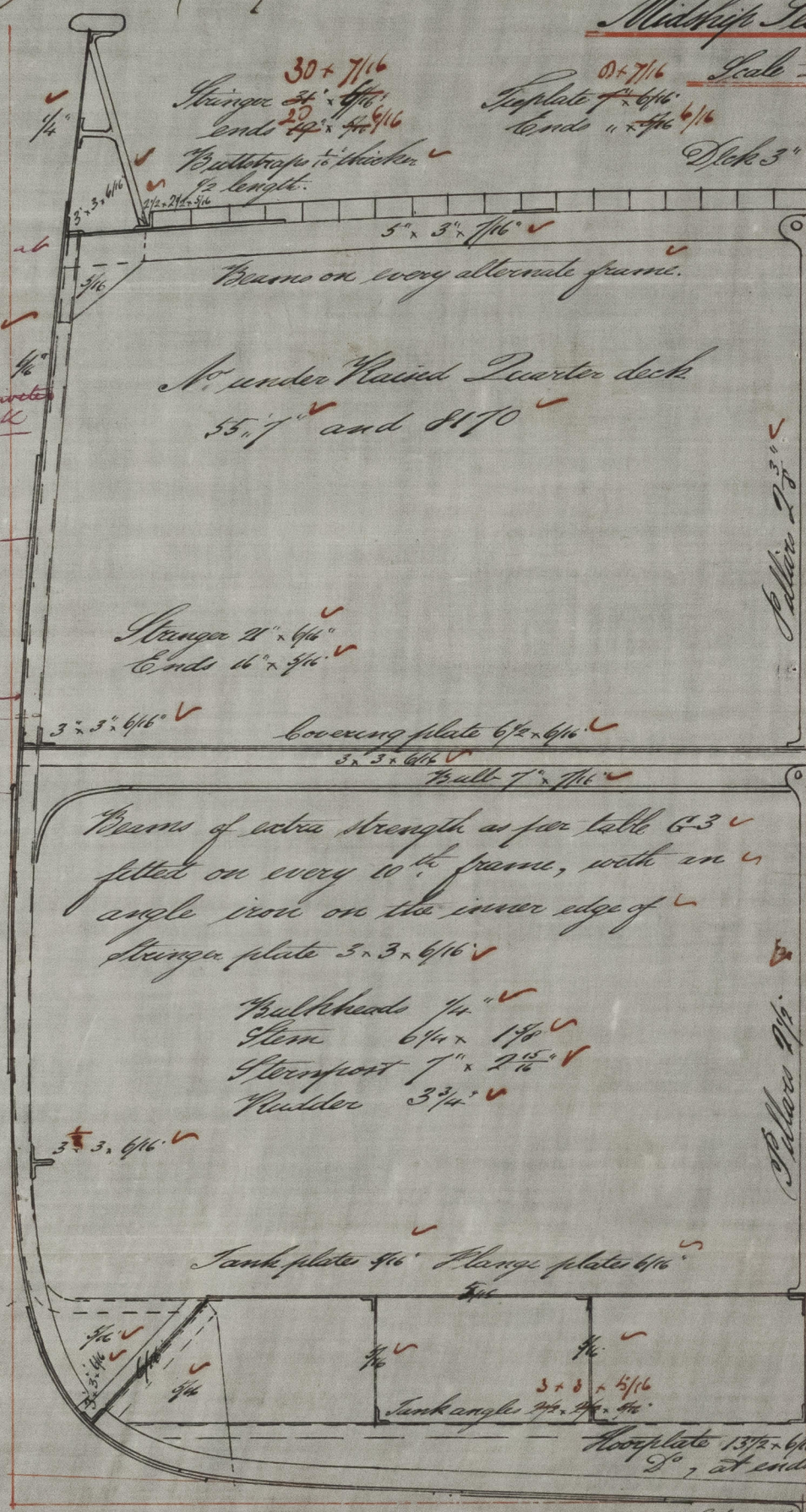
Midship Section No. 4585

20/9/75
Thickness of shell plating
to be altered to the Plate
for 90 At grade. 11/89

Wm. H. Turnbull Esq.

Whitby, Aug 1/75.
Rec 2/9/75 29-9-75

Sole
strengthened at
break as
required by
Sec. 45
Suble riveted
at break



Plates 2 3/4"

Plates 2 3/4"

Main on every alternate frame.			
Length on Main Deck	147' 0"		
Breadth extreme	22' 8"		
" Moulded	22' 0"	B = 11.0	
Depth to top of keel	14' 0"	D = 14.0	
" " floor	12' 10 1/2"	B = 22.8	
Depth	22' 8"	47' 8"	
No. 47 and 6994. 7006			
Class 90 21			

Within 11 depth & 7 breadth.

Frames spaced 21" centre to centre.
Do 3' x 3' 3/4" 3/8 length amidships
Do " " 3/4" 1/2 " at ends
Reverse bar 2 1/2" x 3/4", extending to stringer
above bulge, and gunwale alternately,
and to be double to turn of bulge, in
Engine room.

Keelson 10" x 1/2"
Under Keelson 6 1/2" x 3/4"
Keelson angle 3' x 3' 3/4"

Keelson plate 13 1/2" x 3/4"
Do, at ends 5 1/2"

Keel 7' 1 1/2"
30' 9/16"
fore ends 1/2"

Keel ends 6 1/2"
Saps of plating from keel to upper turn
of bulge double riveted.

Stringer 30 x 7/16
ends 1 1/2"
Bultraps to thicken & lengthen.
Vessel to be strengthened at
break as per Sec. 45.
Double riveted

Double riveted at break
ends 5/16"

Height of alternate
Reverse frames, remaining
to extend to gunwale

Saps of plating from upper turn
of bulge to keelson angle riveted.

angle riveted.
ends 6 1/2"
Bultraps to thicken
1/2 length.



© 2021
31/10/75
Lloyd's Register
Foundation