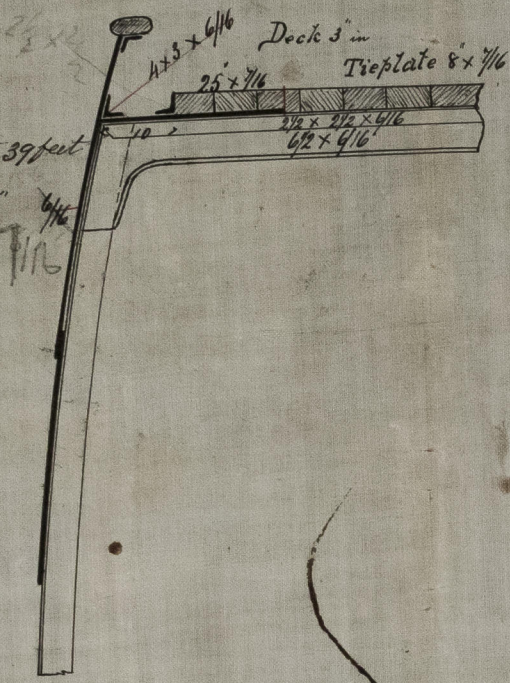


8/4/75

SHIP N^o 63
 Rev 6/5/75

Length of Quarter Deck abt 39 feet
 Height " " " 3' 6"

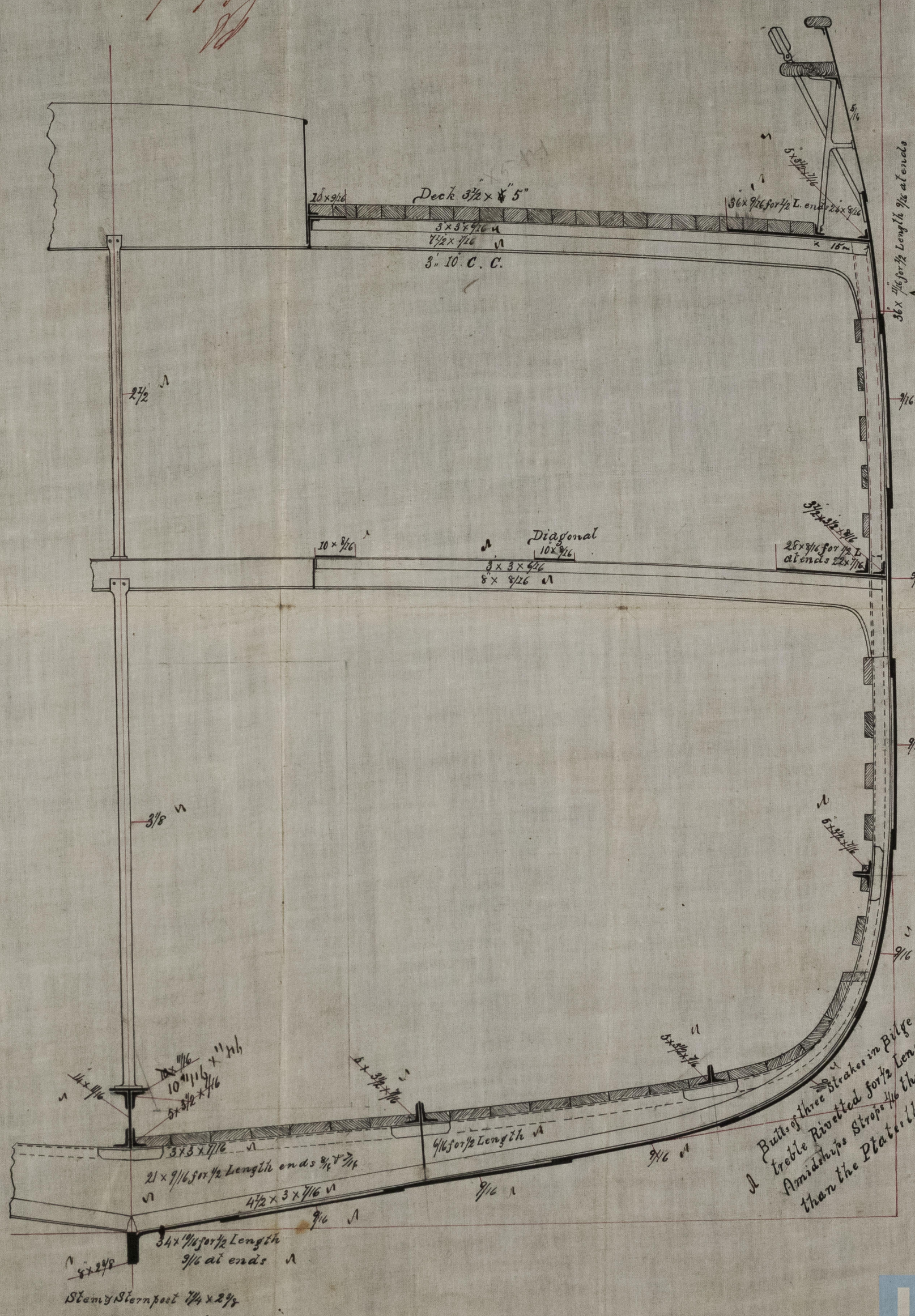
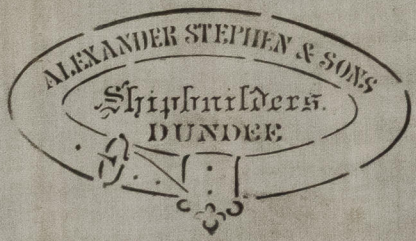


Midship Section

Of a Vessel to Class 100A Lloyds Registry
 To be Built under Special Survey

Dimensions
 Length (as per Rule) - - - - - 192' 11 1/2"
 Breadth Moulded - - - - - 32' 0"
 Depth from top of keel to upper Deck beams 20' 11 1/2"
 Girth of half Midship Section (as per Rule) - - 32' 5"
 Numbers to regulate scantlings 49.37 & 1333.04
 Proportions Length over 9 Depths & over 6 Breadths

Scale 1/2 in = 1 Foot



Bulls of Main Stringer &
 Sheer Strake treble Rivelled
 for 1/2 Length Amidships
 Strips 1/16 thicker than
 the Plates they Connect

Bulls of three Strakes in Bilge
 treble Rivelled for 1/2 Length
 Amidships Strips 1/16 thicker
 than the Plates they Connect

18.11
 10.1
 7/5/75