

22/4/75

No 1

S.S. Copec
Iron W^m 18356

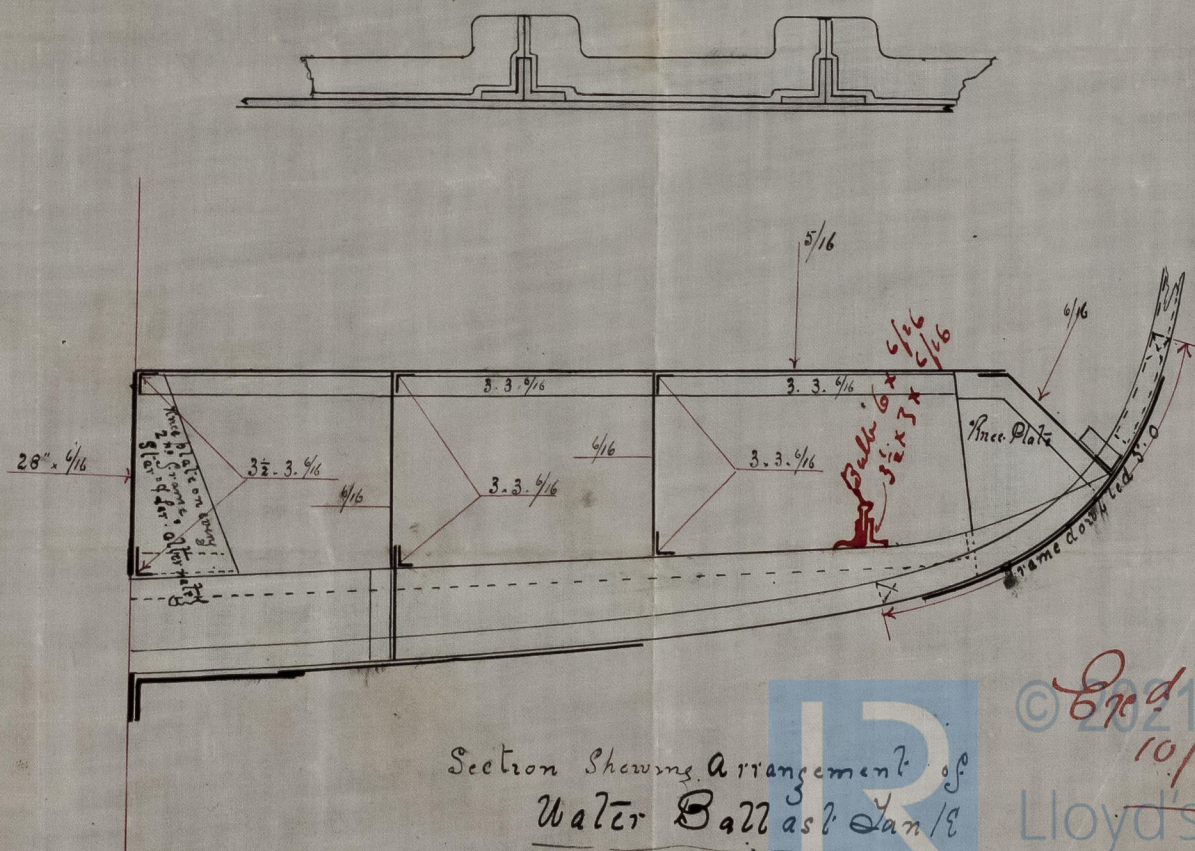
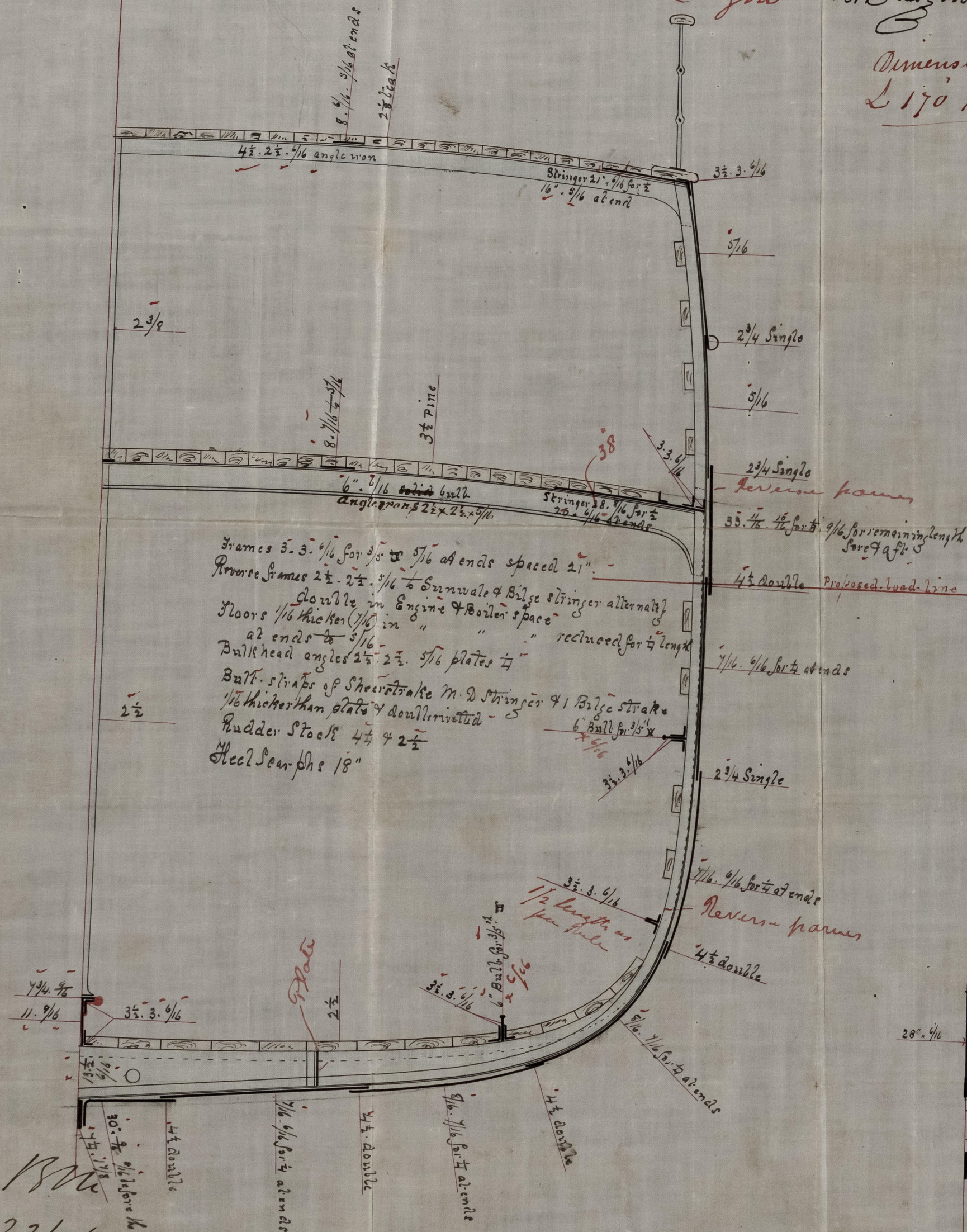
6.8 Breadth to Length

Port Glasgow

Dimensions for scattering
L 170' x 25' x 13.15

$\frac{1}{2}$ Breadth ~~12.5~~ 12.5
 $\frac{1}{2}$ Lenth ~~22.2~~ 22.8
 Depth ~~13.15~~ 13.15
~~100~~ $\frac{100}{4} = 25$ ~~47.85~~ 47.85 * Length ~~200~~ number
~~100~~ $\frac{100}{4} = 25$ ~~47.85~~ 47.85 * ~~190~~ = ~~8060.54~~
~~100~~ $\frac{100}{4} = 25$ ~~47.85~~ 47.85 * ~~190~~ = ~~8134.5~~ - 2nd No.
 Equipment Number ~~6~~ added 1355.9
 $\frac{1}{2}$ Breadth 12.5
~~9490.4~~ for Output.

1 Bower Anchor	ex stock	Cur.
1 do	do	10 -
1 do	do	9½ -
		9 -
		<hr/> 28½ Collective Weight.
1 Stream		
1 Kedge		4¾ -
1 do		2¼ -
		1 -
95 fathoms	1 2/16 steel Chain Cable	
90 =	12/16 Chain	
90 =	6½ Hawser	



Section Showing Arrangement of
Water Ballast Tank

Exd. H.M.

10/4/75
Lloyd's Register
Foundation

IRON 513-0165