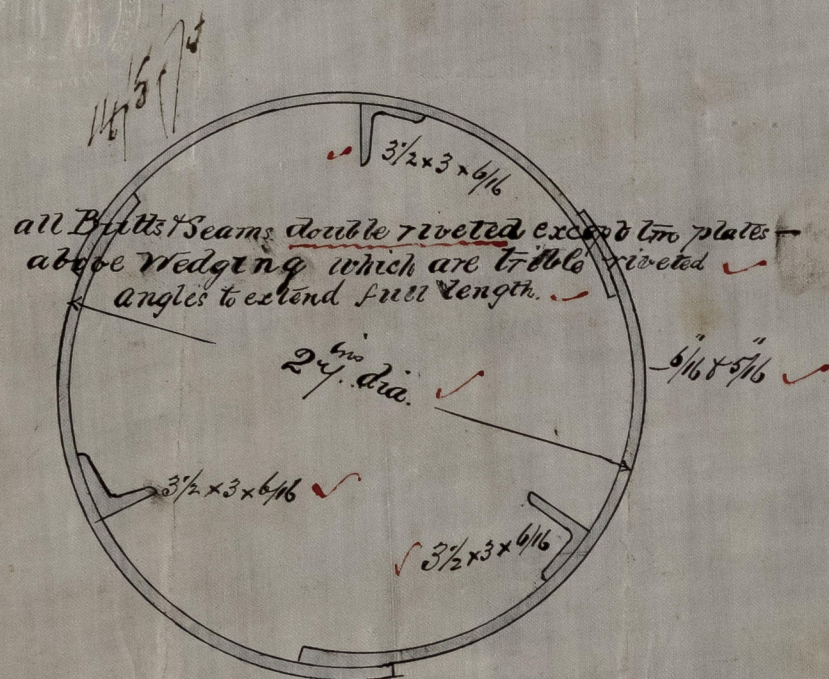


Bartram, Haswell & Co
Sunderland
May 4th 1875.

Ship 'Castle Holmes' Report No 11,258.
Masts and Yards No 83 Sailing Ship.

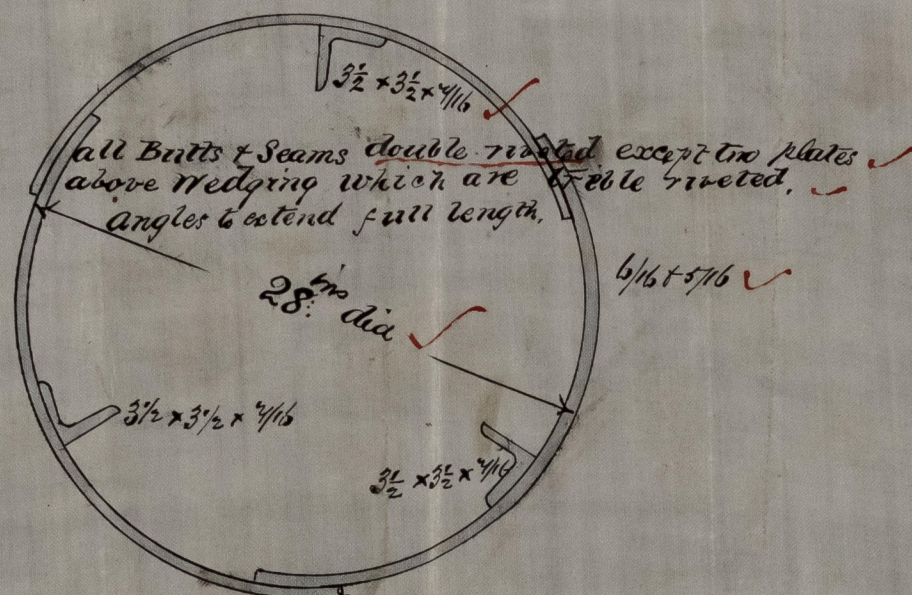
Scale $1\frac{1}{2}$ " = one foot.

Fore Mast.



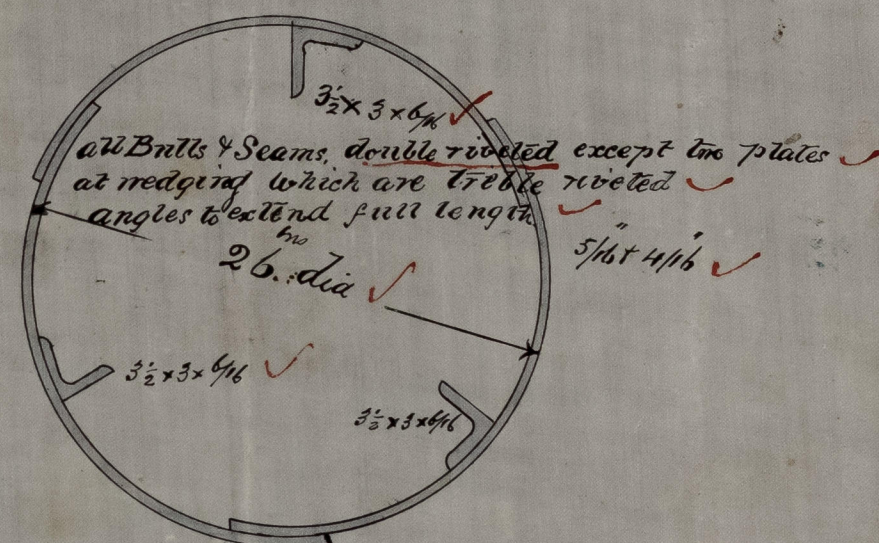
Deck to Hounds - 43' 6"
Housing 20' 8"
Head 12' 9"
Extreme Length 76' 11"

Main Mast.



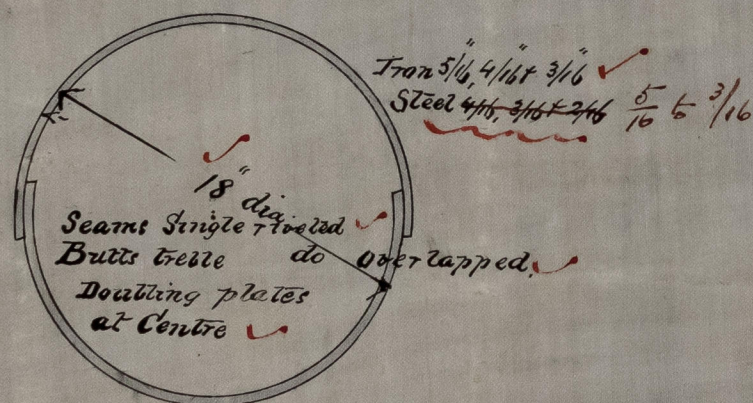
Deck to Hounds 46' 6"
Housing 20' 0"
Head 12' 9"
Extreme Length 79' 3"

Mizen Mast.



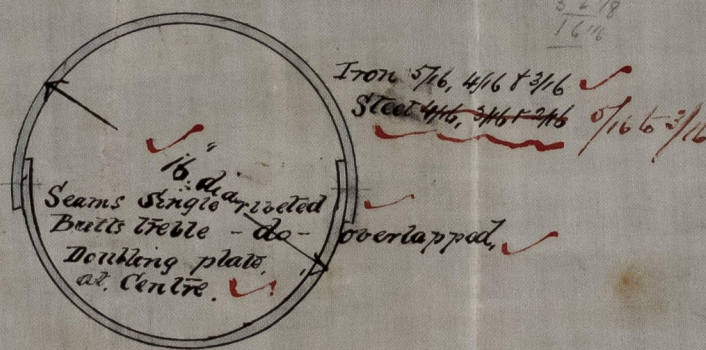
Deck to Hounds 42' 0"
Housing 20' 8"
Head 11' 0"
Extreme Length 73' 8"

Iron Fore Lower Yard.
Steel Main do do



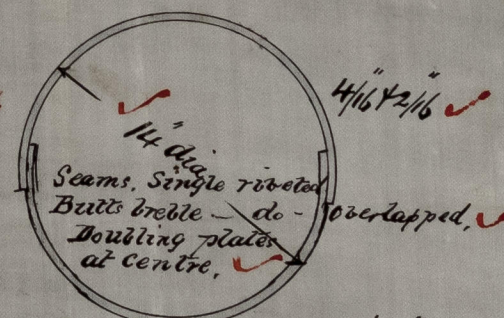
Extreme Length 75' 9"

Iron Fore Lower Top sail Yard.
Steel Main do do do



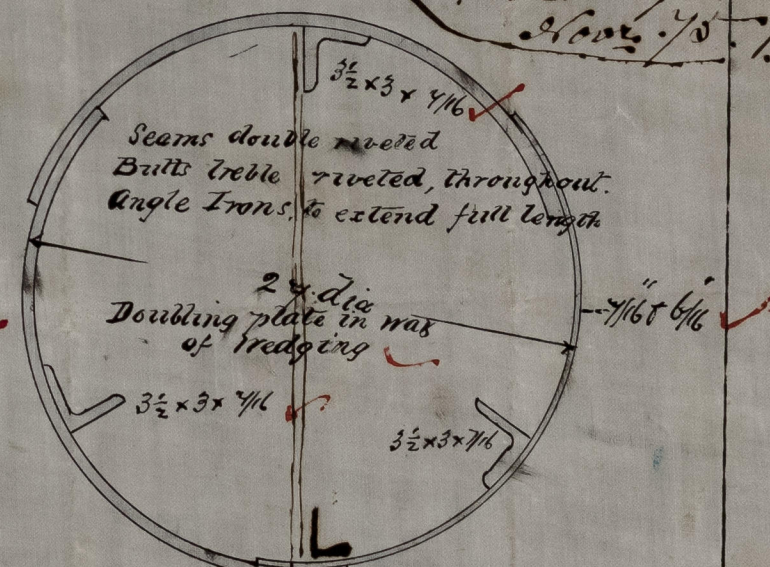
Extreme Length 65' 0"

Mizen Lower Yard
Iron.



Extreme Length 59' 9"

Bowsprit.



Length outside of Bed 21' 9"
Extreme Length 35' 6"

Mizen Mast 6th 75.
Each Mast is 2 feet
Shorter than above
Specified Mast

Has Diaphragm
plates in
addition to
three angles
above 75' M.

18/5/75
18/5/75
18/5/75