

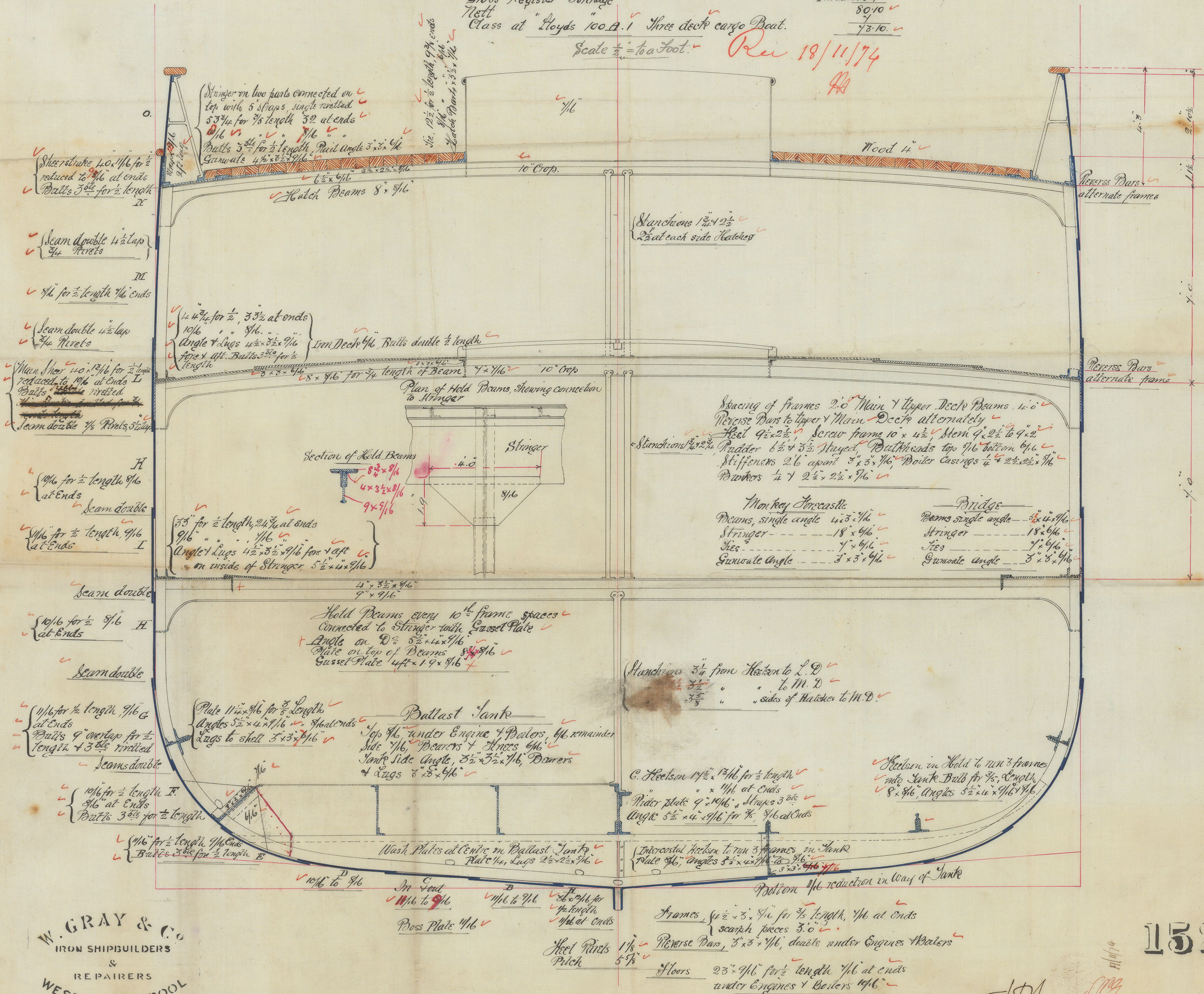
S. S. "Standard"  
Report No. 3516.

Dimensions  $\& C^{\frac{cc}{n}}$

	Builders	Lloyds
Length over all	285.0	
D <sup>o</sup> between Posts	270.0	268.5 ✓
Breadth Extreme	33.8	33.6 ✓
Depth of Hold to the upper Deck	24.0	25.11 ✓
D <sup>o</sup> Main Deck	17.0	18.11
Depths in Lengths to Main Deck		147.15 ✓ under 11 to upper Deck.
Breadths in D <sup>o</sup>		84.9 ✓
Number for Regulating frames & C <sup>o</sup>		4310 ✓
D <sup>o</sup> " " Scantlings	48.83 x 268.33 =	14804 ✓
D <sup>o</sup> " " Equipment	50.83 x 268.33 =	21696 ✓
Gross Register Tonnage		Girth 38.2 ✓ Depth 25.11 ✓ ½ Breadth 16.9 ✓
Nett		80.10 ✓
Class at "Lloyds" 100 A.1 Three deck cargo Boat.		43.10 ✓

Scale  $\frac{1}{2}$ " = 100 Feet.

Rec 18/11/74



W. GRAY & Co  
IRON SHIPBUILDERS  
&  
REPAIRERS  
WEST HARTLEPOOL

152

J.V.A.  
19/11/74