

- No 92 -

Length 218.0
 Breadth 34.6
 Depth to top of ceiling 21.6
 - Scale $\frac{1}{4} = 1 \text{ Ft} -$

- To Class 100A at Lloyds -

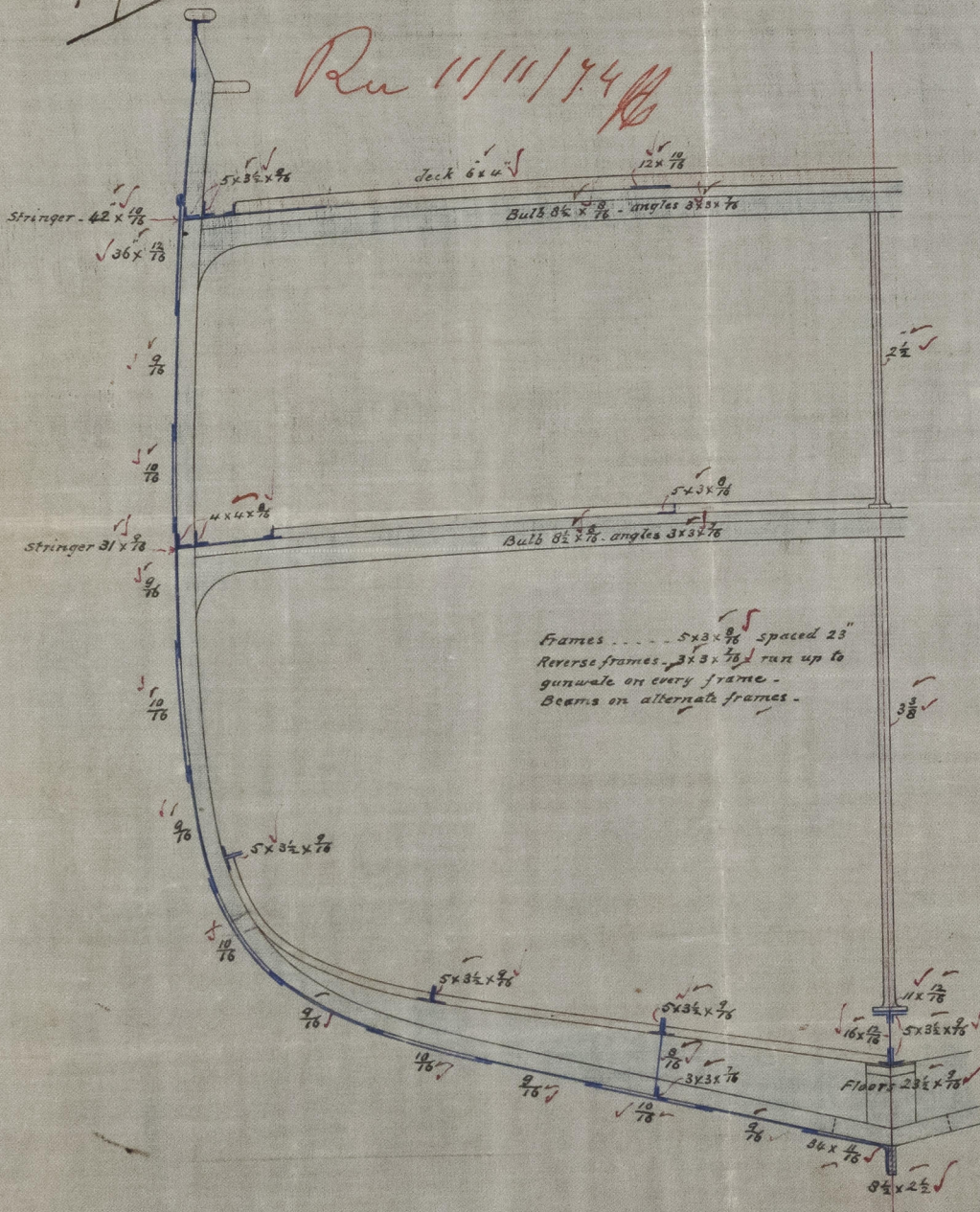
- Numerals $(17.3 + 23.8 + 35) = 75.9 \times 218 = 16546 -$

- Length = 6.3 Breadths - 4.5 Depths -
 9.21"

12/11/74

Run 11/11/74

J. M. Neil
 9th Nov 1874



Nov 5th 1874

M.C.



© 2021

Lloyd's Register
 Foundation

IRON 512-0250