

# Sketch of Boilers of P. S. Swift by J Penn & Sons.

July - 1875

## Two Boilers

Working pressure 60 lbs.

Diameter 11' 10" inside

Riveting horizontal seams.

$\leftarrow 3\frac{3}{4}" \rightarrow$   $\bigcirc - 1\frac{1}{8}"$  rivets

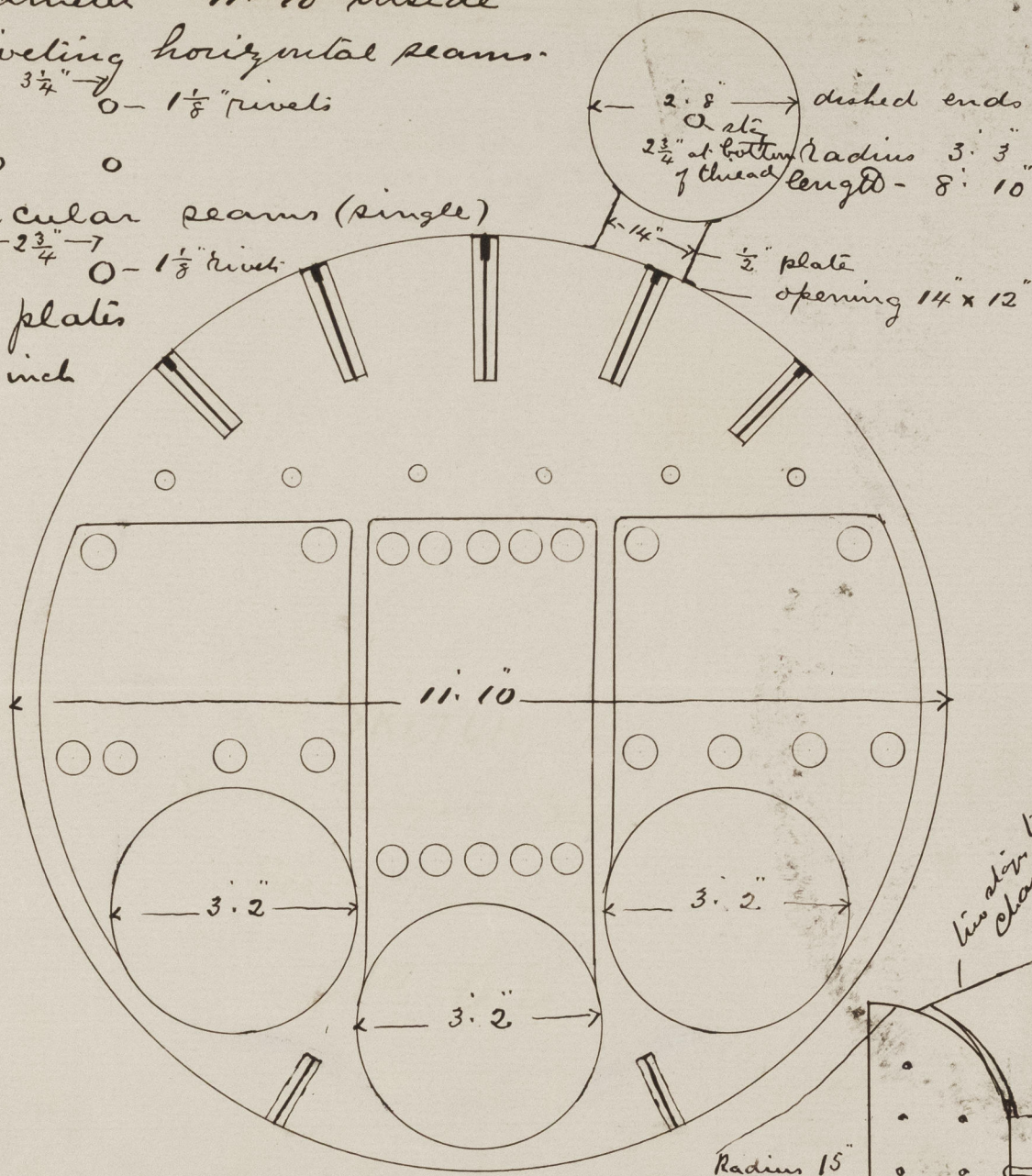
$\bigcirc \quad \bigcirc$

Circular seams (single)

$\leftarrow 2\frac{3}{4}" \rightarrow$   $\bigcirc - 1\frac{1}{8}"$  rivets

Shell plates

$\frac{15}{16}"$  inch



Length of Boiler over all 9' 4"

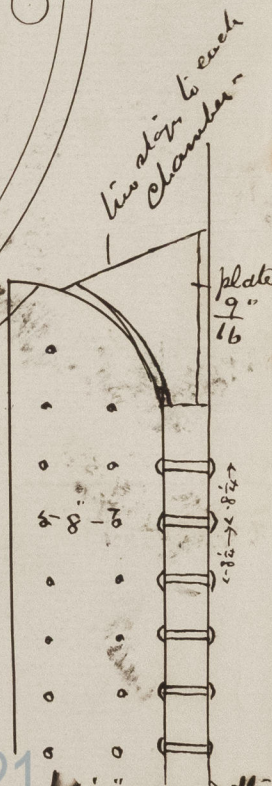
Heating surface in each - 1553 sq. feet

Crate - do - " - 61 - do.

Length of furnaces - 7 feet

- do of bars - 6' 5"

Two rings in each furnace - thus



Wm. Parker  
16/8/75