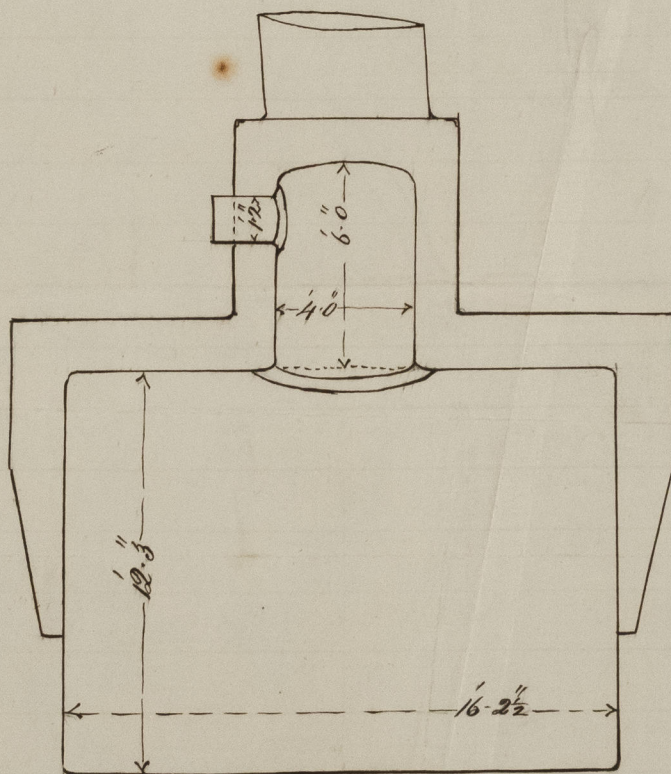
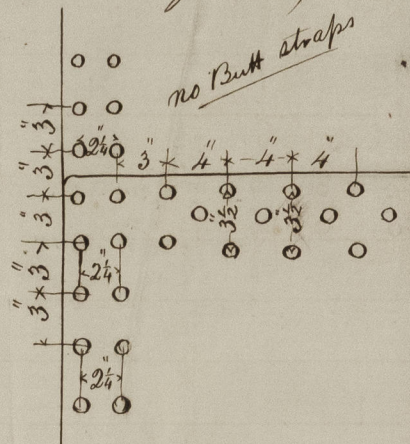


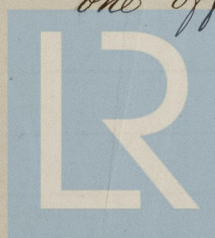
# 14 580 Iron

## Steam Ship "Plover."

Diameter of Boiler. 12' 3",  
 Thickness of shell plates.  $\frac{15}{16}$  inch = 5096 lb. per sect<sup>l</sup> inch,  
 Description of riveting. Horizontal seams treble. Circumferential, double  
 Pitch of rivets. 4" Horizontal. 3" Circumferential,  
 Size of rivets = 1  $\frac{1}{16}$  inch  
 Number of Furnaces = 4;  
 Diameter of Furnaces = 3' 1  $\frac{1}{2}$ ,"  
 Length of Furnace = 5' 1" Bars 4' 6",  
 Thickness of Furnace plates =  $\frac{1}{2}$  inch,  
 Whether strengthened with rings = no rings,  
 In what way flat surfaces are stayed, screwed stays, and square ones  
 Pitch of screwed stays 9" x 8" x 1  $\frac{1}{2}$ " dia<sup>r</sup> = 2752 lb. per sect<sup>l</sup> inch  
 Pitch of square bolts 1  $\frac{1}{8}$ " x 1  $\frac{1}{8}$ " square = 5460 lb. per sect<sup>l</sup> inch



Boiler. one off -



2021  
 William Allison.  
 Engineer Surveyor.  
 May 20<sup>th</sup> / 75  
 Lloyd's Register  
 Foundation