

S. Africa
 Glasgow report No. 4041.

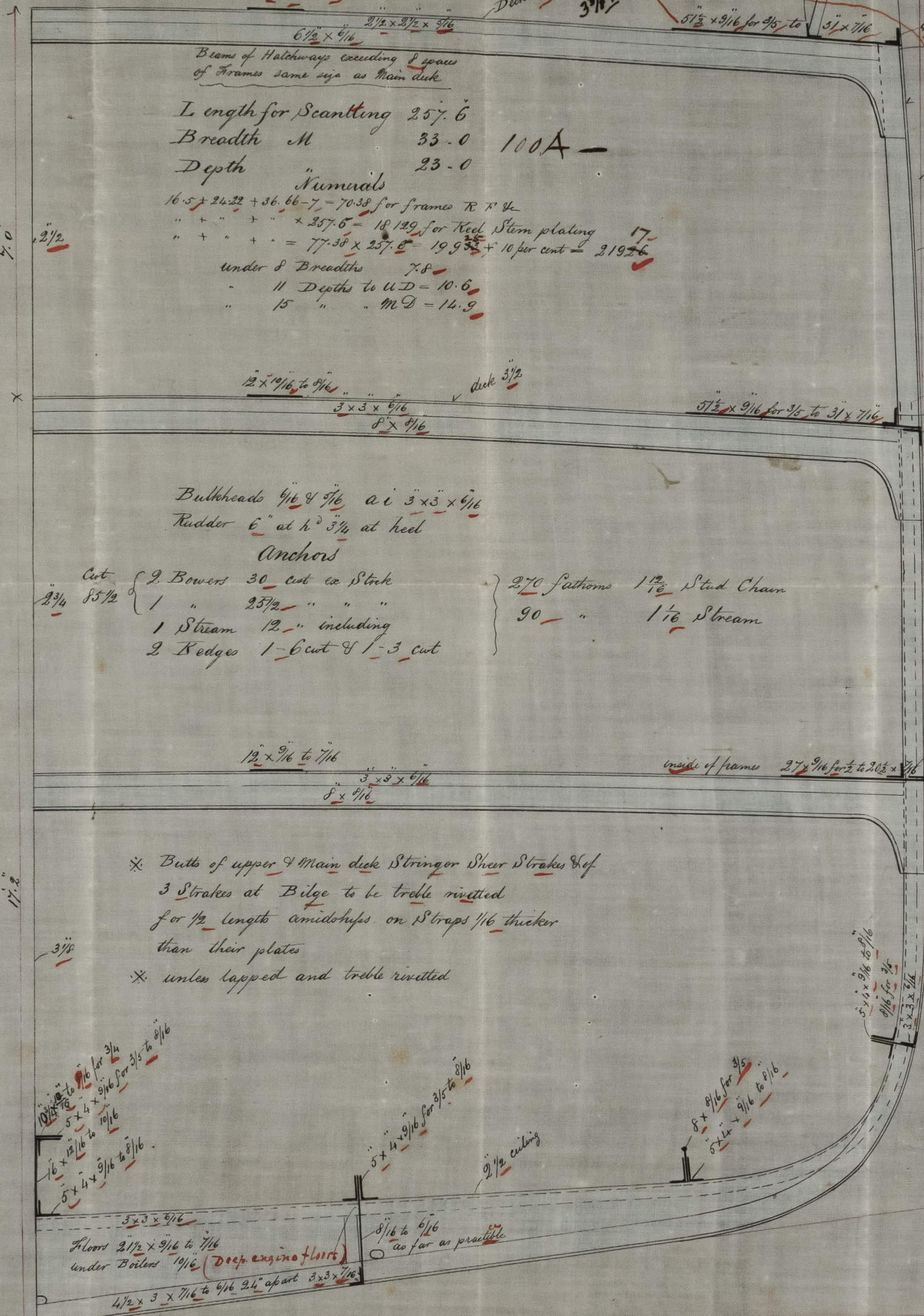
MIDSHIP SECTION

No 182.

SCALE 1/2 INCH TO A FOOT

Peep 68.5ft long Forecastle 56.25

See 1/4 length see section 44. P. 1. for expansion



Beams of Hatchways exceeding 8 spaces of Frames same size as Main deck

Length for Scantling 257.6
 Breadth M 33.0 100A-
 Depth 23.0

Numinals
 16.5 + 24.22 + 36.66 - 7 = 70.38 for frames R F & L
 " + " + " + 357.6 = 181.29 for Keel Stern plating
 " + " + " = 77.38 x 257.6 = 19,933 + 10 per cent = 219.26
 under 8 Breadths 7.8
 11 Depths to U.D. = 10.6
 15 " " M.D. = 14.9

Bulkheads 4/16 & 7/16 at 3' x 3' x 7/16
 Rudder 6" at h' 3 3/4 at heel

Anchors

Cut { 2 Bowers 30 cut ea Stock
 1 " 25 1/2 " " "
 1 Stream 12 " including
 2 Kedges 1-6 cut & 1-3 cut } 270 fathoms 1 1/2 Stud Chain
 90 " 1 1/6 Stream

* Butts of upper & Main deck Stringer Sheer Strakes & of 3 Strakes at Bilge to be treble riveted for 1/2 length amidships on Straps 1/16 thicker than their plates

* unless lapped and treble riveted

*10 1/2 to 11 1/2 for 3/4
 5 x 4 x 9/16 for 3/5 to 3/16
 16 x 12 1/2 to 10 1/6
 5 x 4 x 9/16 to 8 1/16*

Floors 2 1/2 x 9/16 to 7/16 under Boilers 10/16 (deep engine floors)

4 1/2 x 3 x 7/16 to 6/16 2 1/4 apart 3 x 3 x 7/16

36 x 11/16 to 7/16
 9 x 2 1/2 Keel
 Stem 8 1/2 x 2 1/2
 Posts 6 1/2 x 5

Buttstraps of Bulwark plating to be broad enough to take spur of Stanchion

alternate reverse bar
 40 x 11/16 to 9/16
 Compensation over Cargo ports and Side Scuttles

alternate reverse bar
 4 x 4 x 9/16 to 5/16
 40 x 11/16 to 9/16

total width 3 1/2 to 3 5/8
 4 x 4 x 9/16 to 8 1/16

Plating 10 to 8 1/16

2/10/74

2/10/74

W. DENNY & BROS
 IRON SHIPBUILDERS
 DUMBARTON



Lloyd's Register
 Foundation