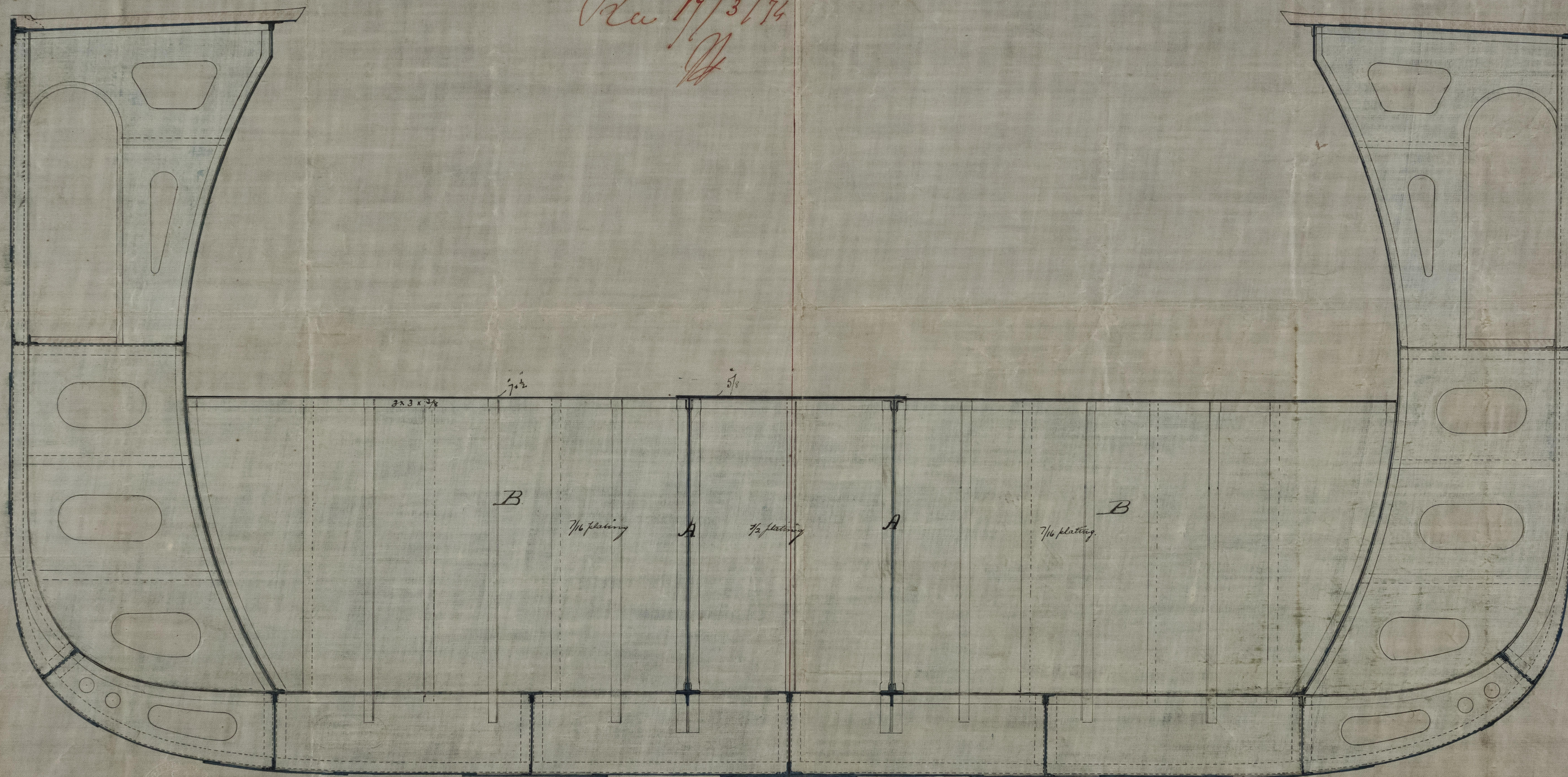


EARLES SHIPBUILDING &
ENGINEERING COMPANY
LIMITED.
HULL

Section at Nos 70 and 105 Shoring Bulkhead
for

taking End Bearings of Bessemer Saloon.
Scale $\frac{1}{2}$ = one foot.

Rev 17/3/74
H



RM
23/4/74

24/4/74