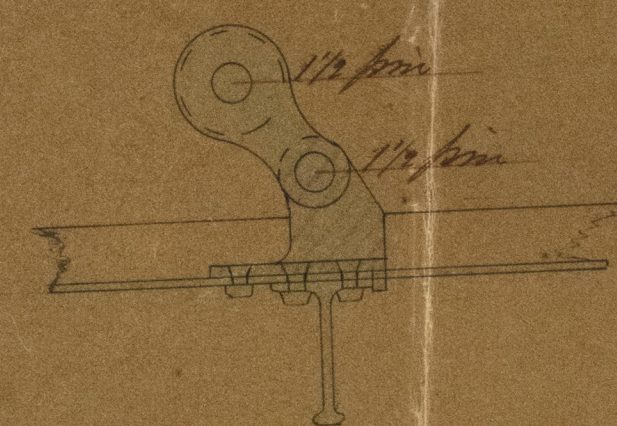


Ships "Star of Russia" & "Star of Bengal"

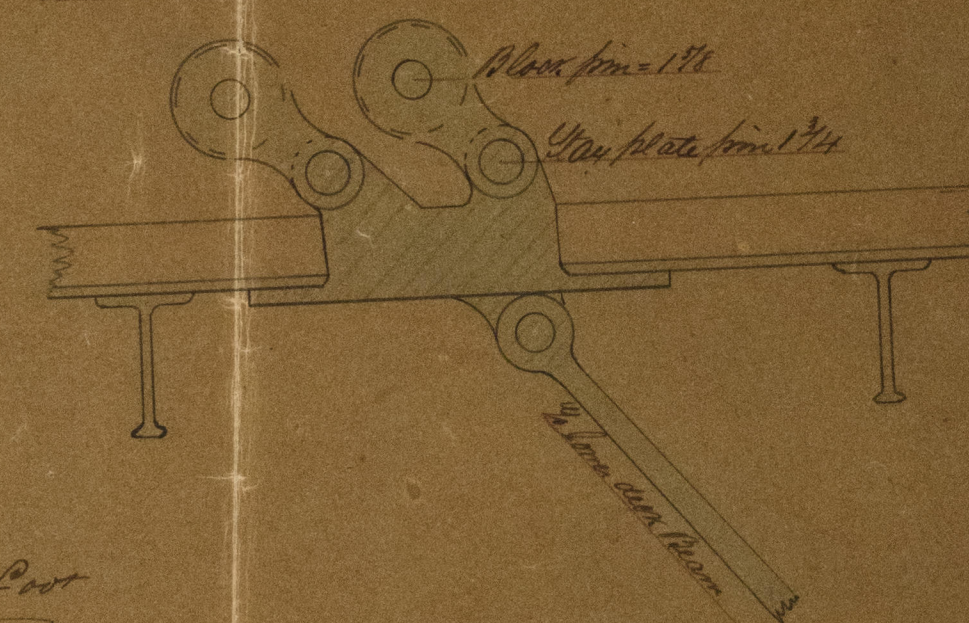
Sketch showing method of fitting Bowsprit, Chain plates, Stay plates, Wobstay, and Wedging of Masts at decks.



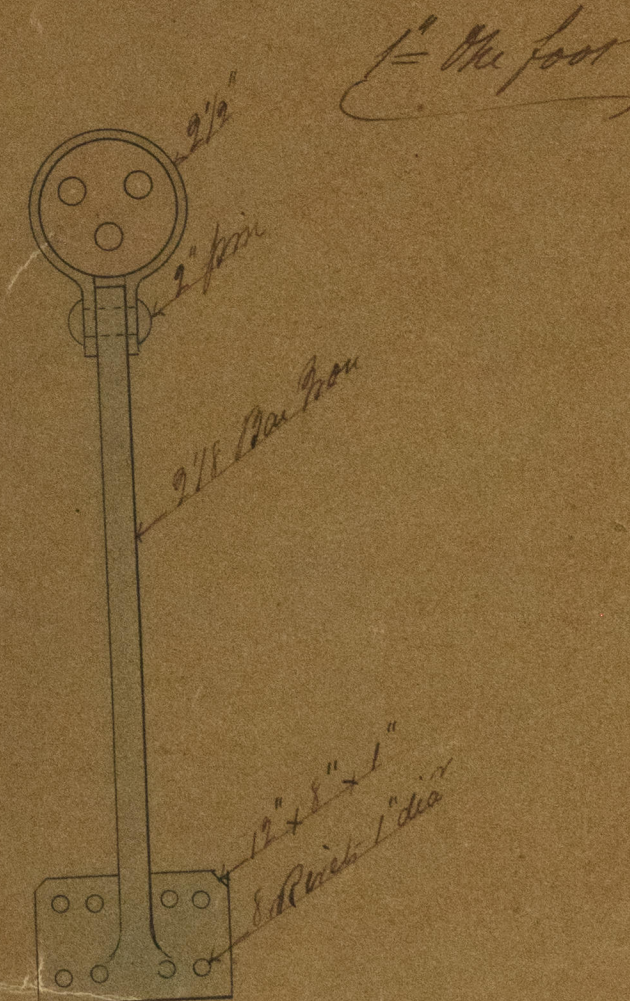
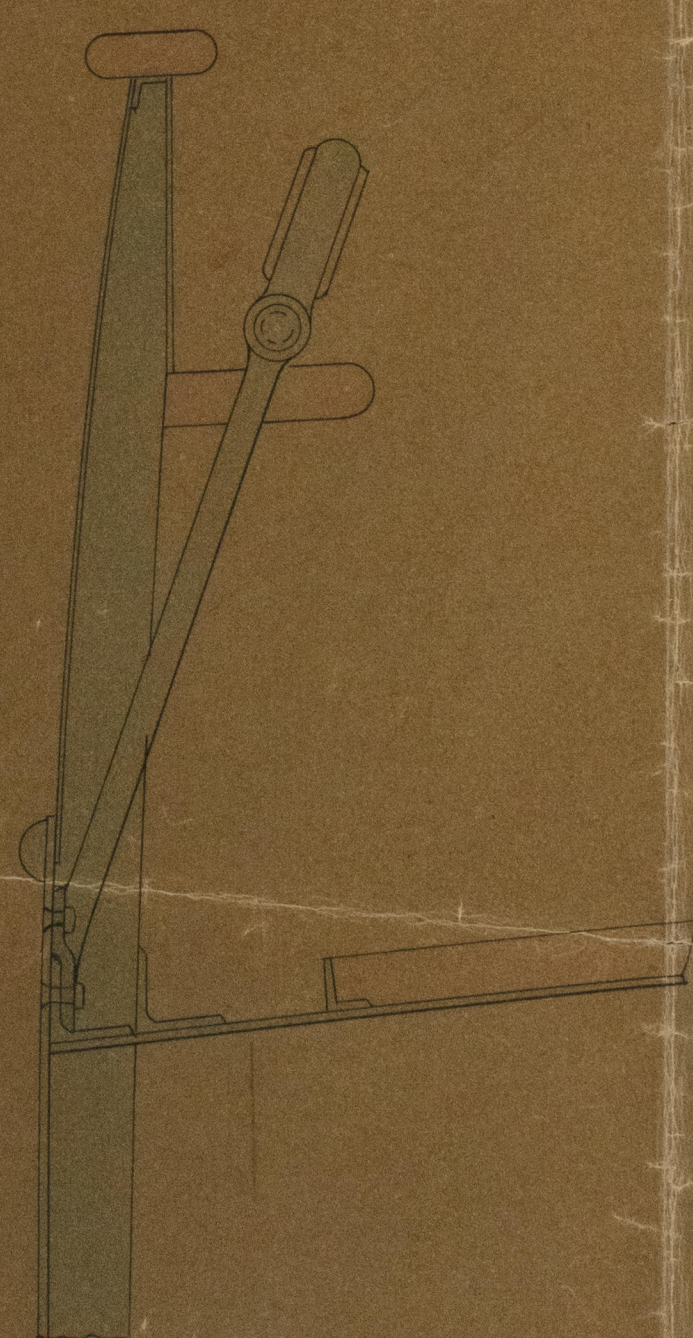
Mizen & Mizzen topmast stay plate
riveted to deck plate & beam with 1 1/4" rivets



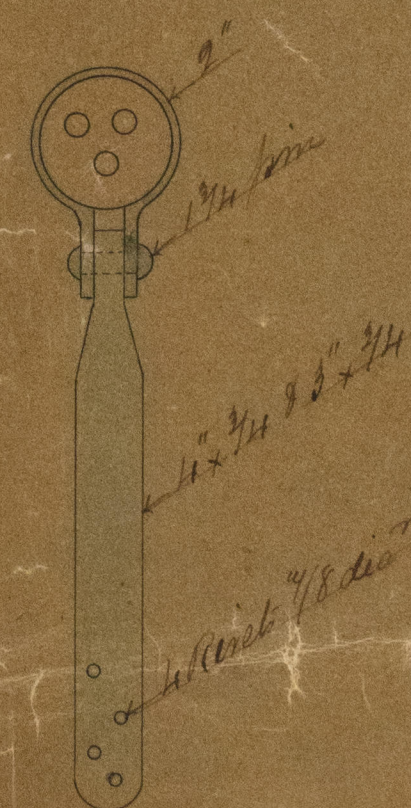
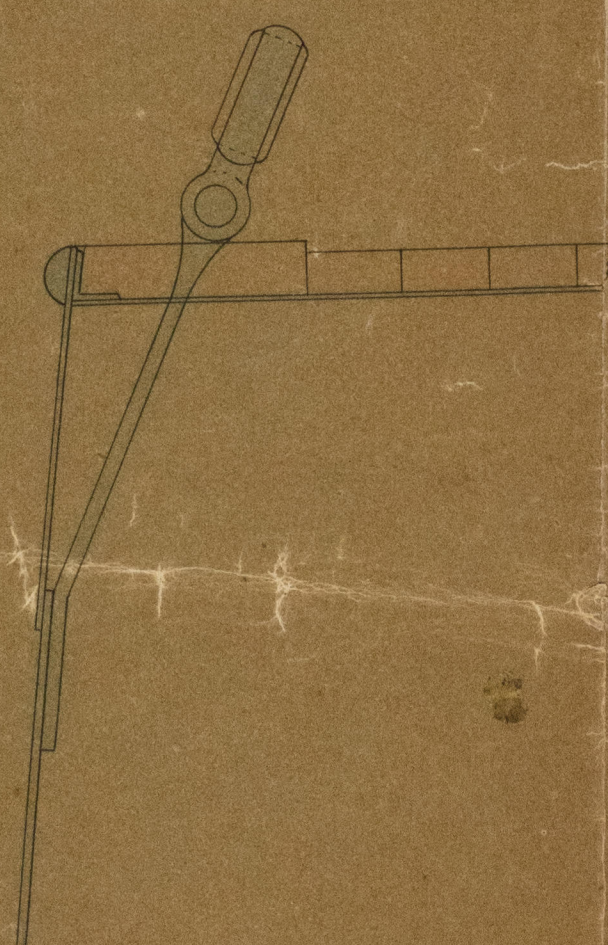
Each stay plate
one for each stay plate from below and riveted to deck plate



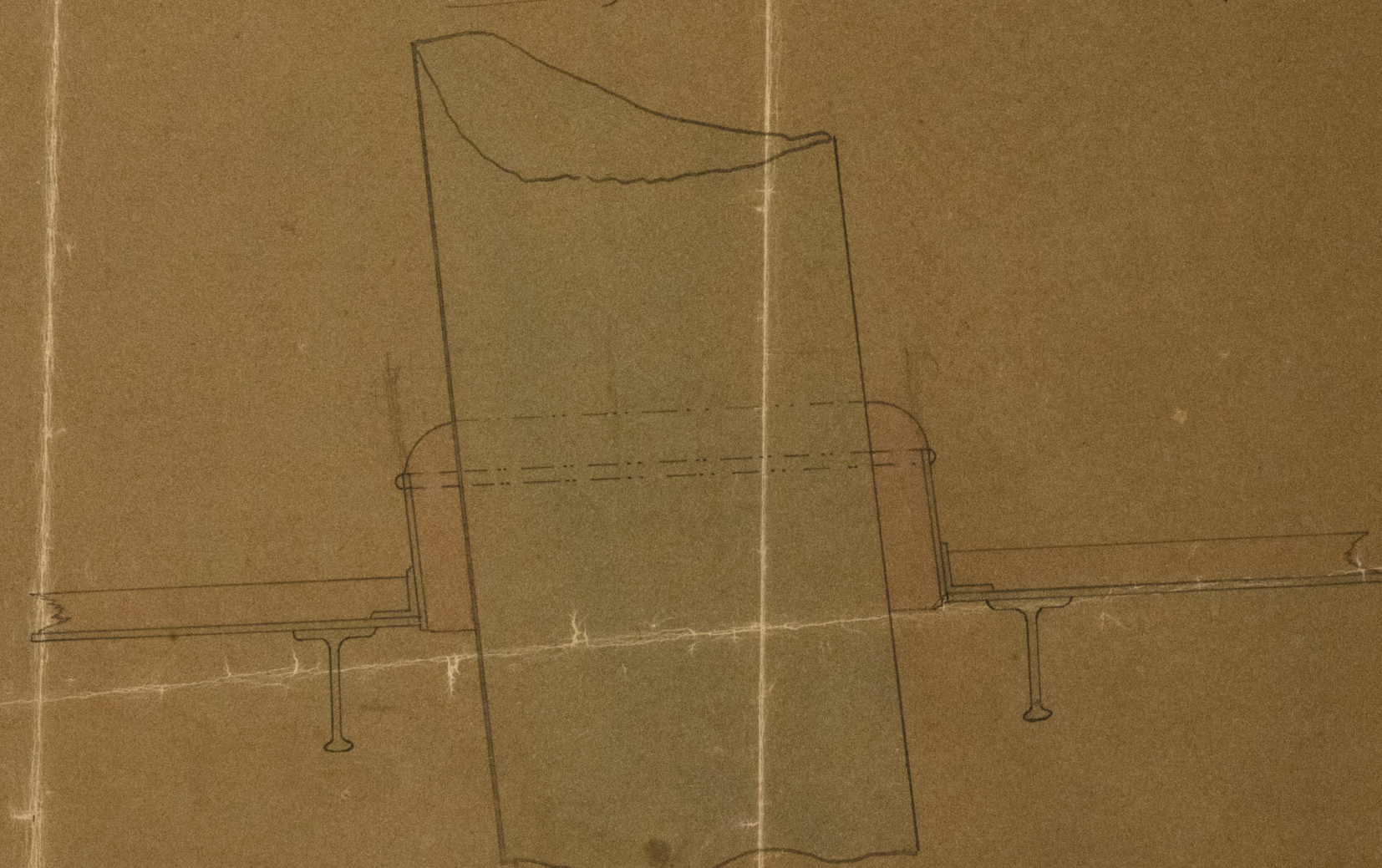
Fore & Main Chain plates



Mizzen Chain Plates



Fore & Main Masts Wedged on both decks



Dec 30/175
J. M. Hill



University of London
Digital Library

IR02510-0186