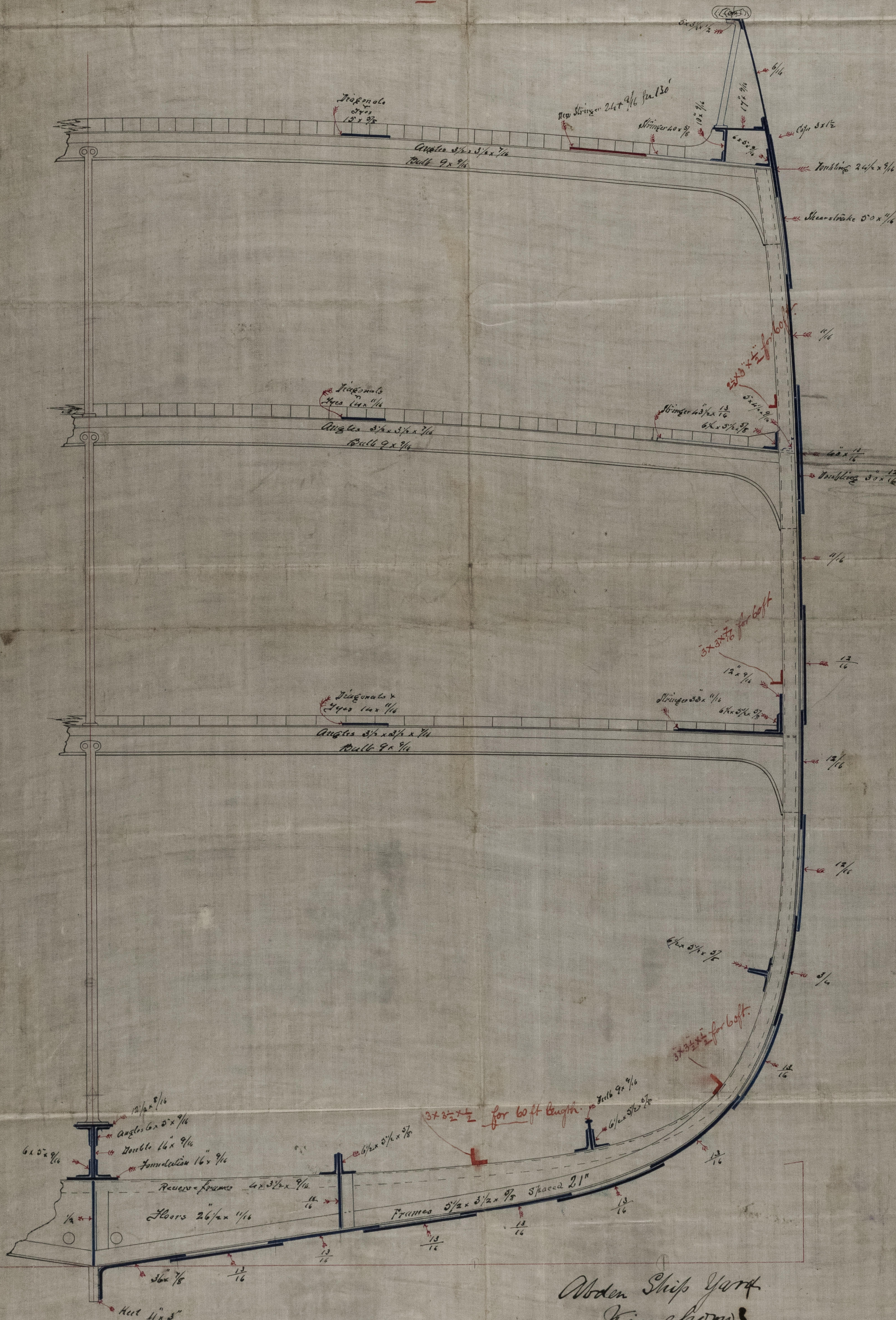


— MIDSHIP SECTION —
— SS "SCOTLAND" — *Tonn 8608*

NUMERALS			
Breadth	19.1	18.95	
Grith	43.2	43.00	
Depth	30.	29.8	
	92.3	91.75	
1 st N ^o	85.3	84.75	
Length	352.	351.6	
2 nd N ^o	30.035	29.75	

Equipment	
1 st N ^o	91.45
Length	351.6
	32259.3
to add for forechaste	3225.9
	<u>35485</u>
Equipment 1 st	



Abden Ship Yard
Kinghorn
Jno Johnkey
H Maccoll
6th Nov 1873

1873
11/7/73