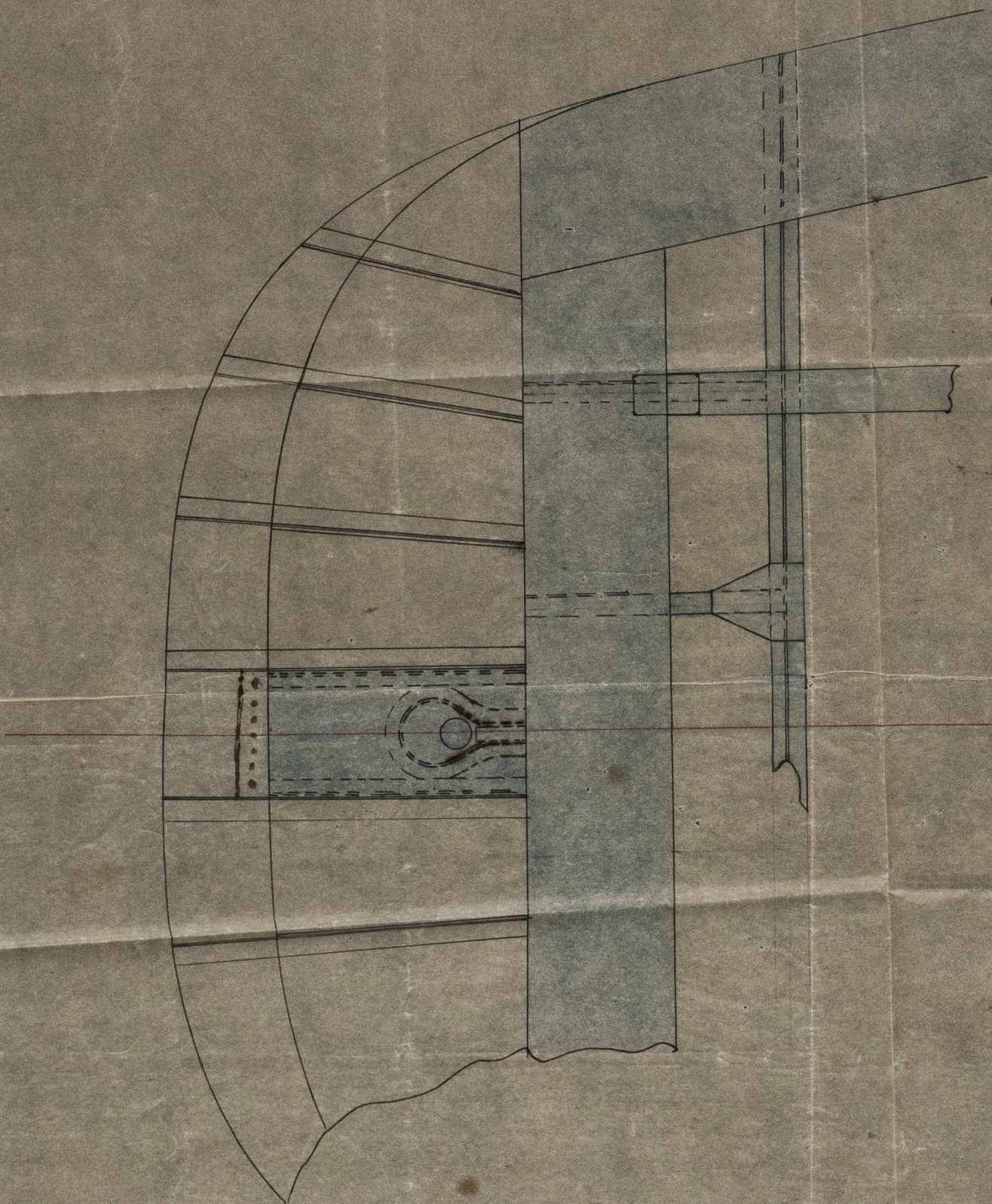




Rev 7/8/74 & 15/8/74 & 29/9/74
20

Sketch showing proposed
Method of fitting stern post
heads when not carried higher
than Main Deck.



Scale 1/2 inch = 1 foot

J. R. Oswald
Pallion
Sunderland
August 14th 1874

18/8/74

Letter to Surveyor
Sunderland
1/10/74