

OF

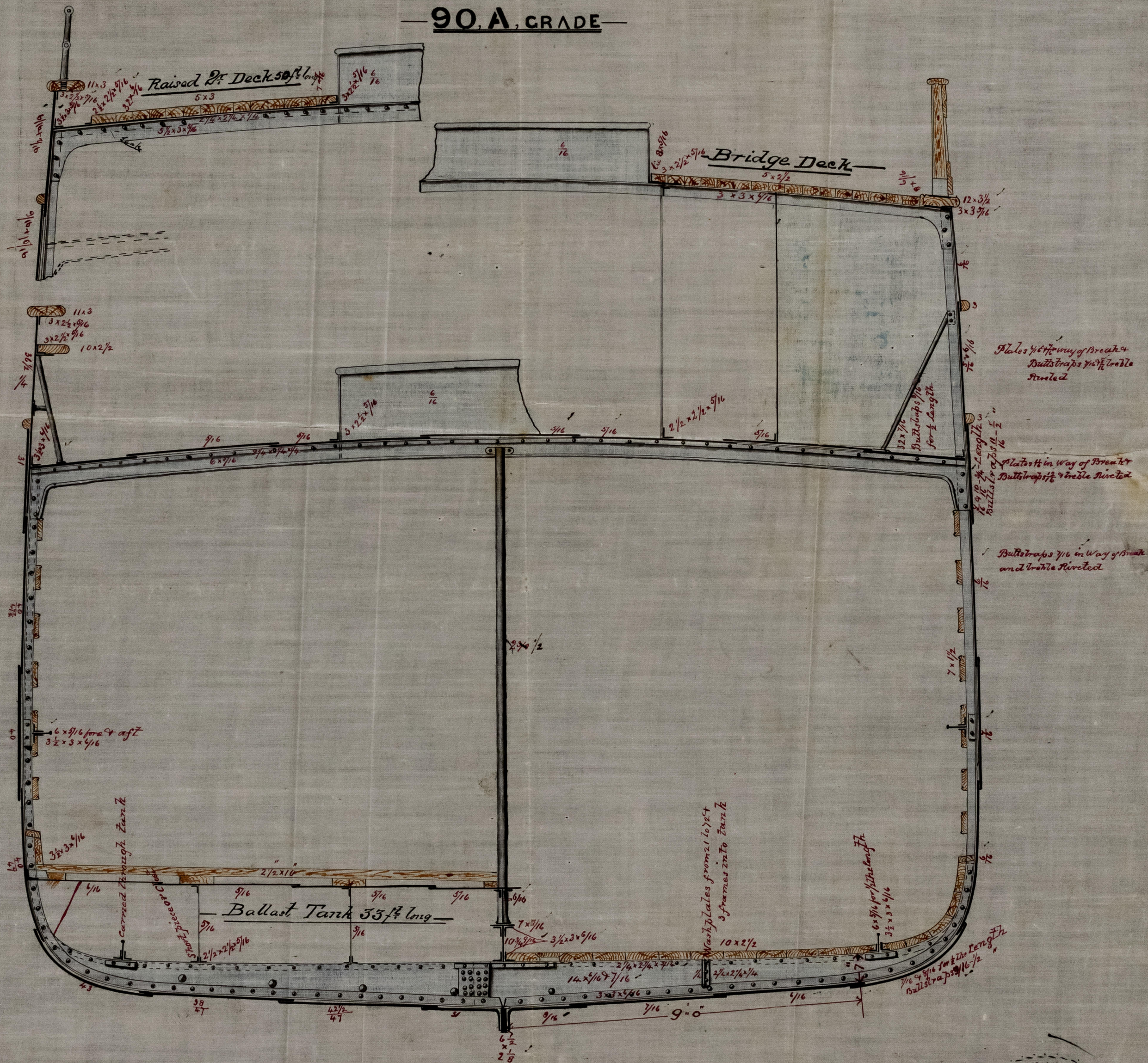
## DIMENSIONS

Rec 6/12/93

6.12.73

LENGTH TWIST PERPENDICULARS -----	-760-	LENGTH PER RULE -----	-158.83-----
BREADTH MOULDED -----	-24.0-----	BREADTH PER RULE -----	-24.0-----
DEPTH IN HOLD -----	-13.0-----	DEPTH PER RULE -----	-14.38-----
BREADTHS TO LENGTH -----	-6.62-----	DEPTH TO LENGTH -----	-11.05-----
<b>NO<sup>S</sup> FOR SCANTLING</b> $12 + 14.38 + 23.88 \times 0.26 \times 158.83 = 798279 + 79827 = 87815$ = EQUIPMENT			

90, A, GRADE



SCALE  $\frac{1}{2}$  INCH TO ONE FOOT-





12655 Iron.

MIDSHIP SECTION

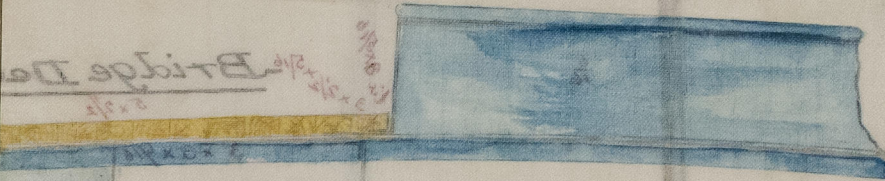
OF

S.S. No 191

DIMENSIONS

INDICATORS	160	LENGTH PER RULE	158.83
	24.0	BREADTH PER RULE	24.0
	13.0	DEPTH PER RULE	14.38
	8.62	DEPTH TO LENGTH	11.02
12 + 14.28 + 23.88 x 2.0 = 79.82 + 7.9827 = 87.80 = EQUILIB			

90 A. GRADE



© 2021

TRANS08-0234

Lloyd's Register  
Foundation