

S.S. "Glenartney"
Glasgow Report No. 3447

S.S. N^{os} 170 74

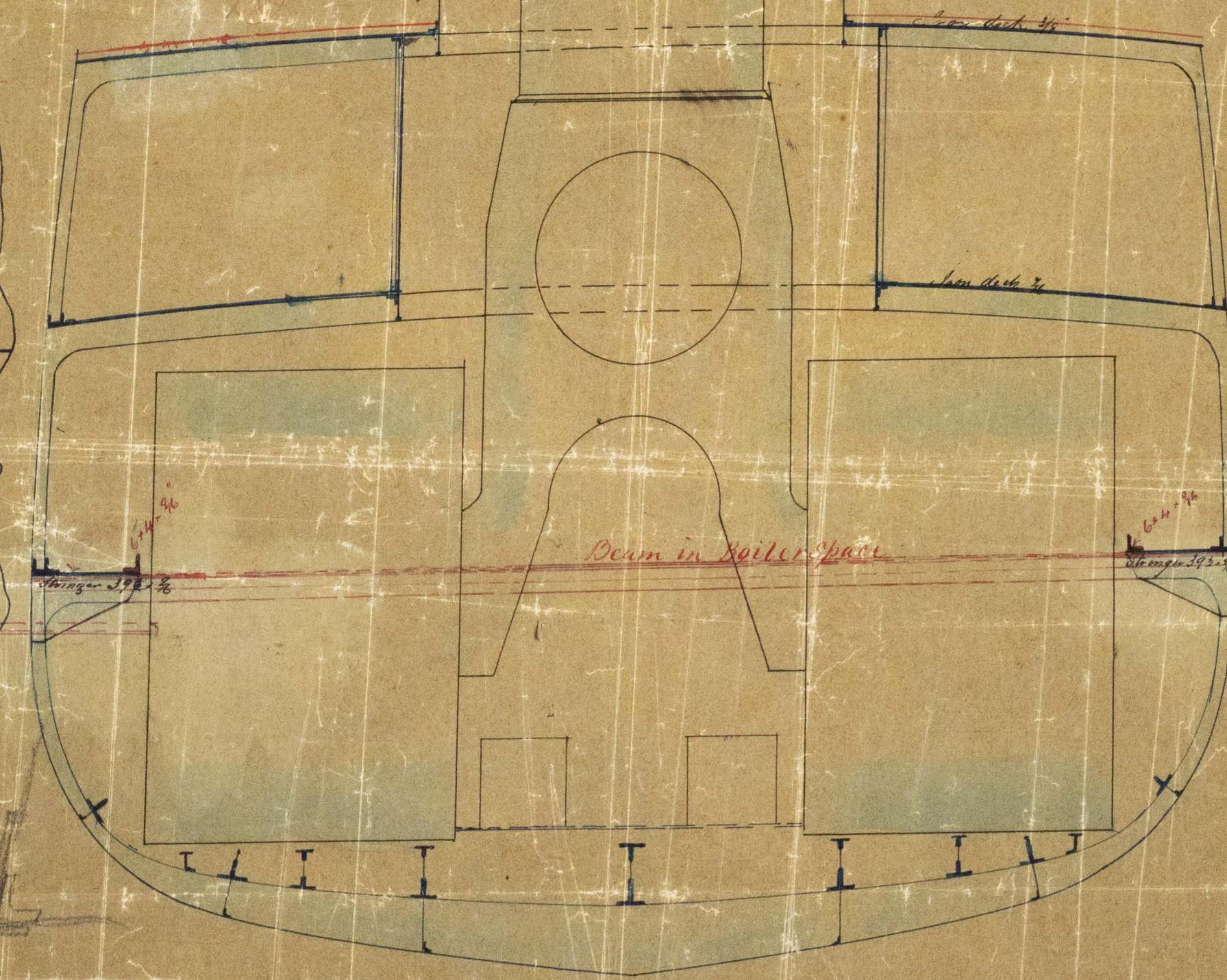
(numbers changed from 170-71)

SCALE 1/4 INCH TO THE FOOT

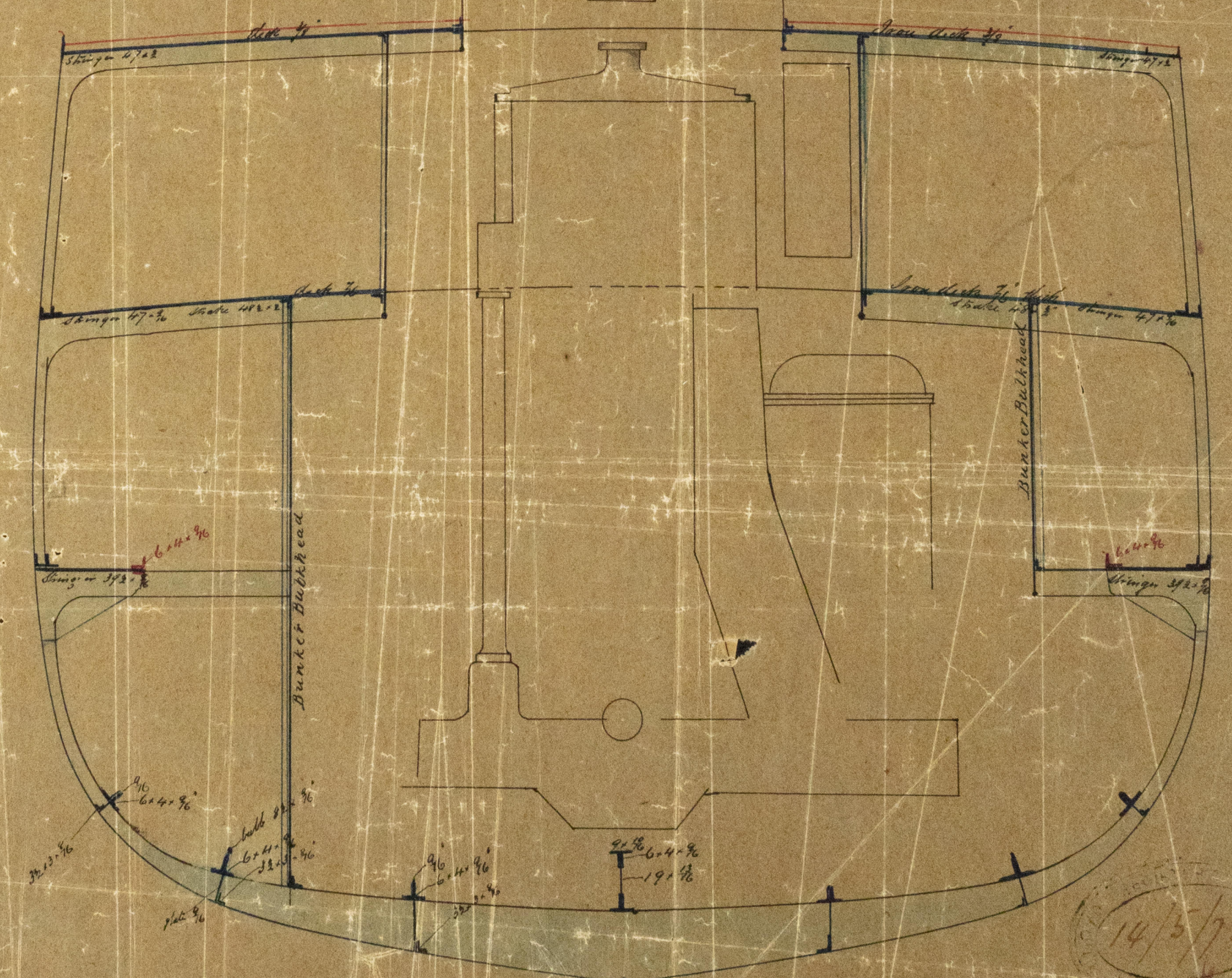
100 H. Three decks

Length - $328.5 \times 35 \times 26.7$
19.7

(Midship Section
approved by Committee
30/12/72)



Low section thro. Boiler space
Cross Section of Beam in Boiler space



Low section thro. Engine space

Elevation & Cross Sections of engine & boiler space, S.S. No 170. SC 174
in Red Ink
Shewing arrangement made to compensate for ship's trim
Scale 1/2" = 1 foot

LONDON & GLASGOW
GLASGOW & GOVAN
10/5/73