

London  
4<sup>th</sup> Nov. 1872.  
N.H.S.

Midship Section of an iron Steamer 700 Tons,  
Building at Northfleet, by Messrs Jackson, Blake, & Co. proposed to (Cap 90 A)  
Sales 25<sup>th</sup> May 1871.

Dimensions

Length	200.0
Breadth extreme	27.9
Depth of Hold	14.9

Numbers

57.65
11530

Depth to length

12.4
Breadth " " 7.2

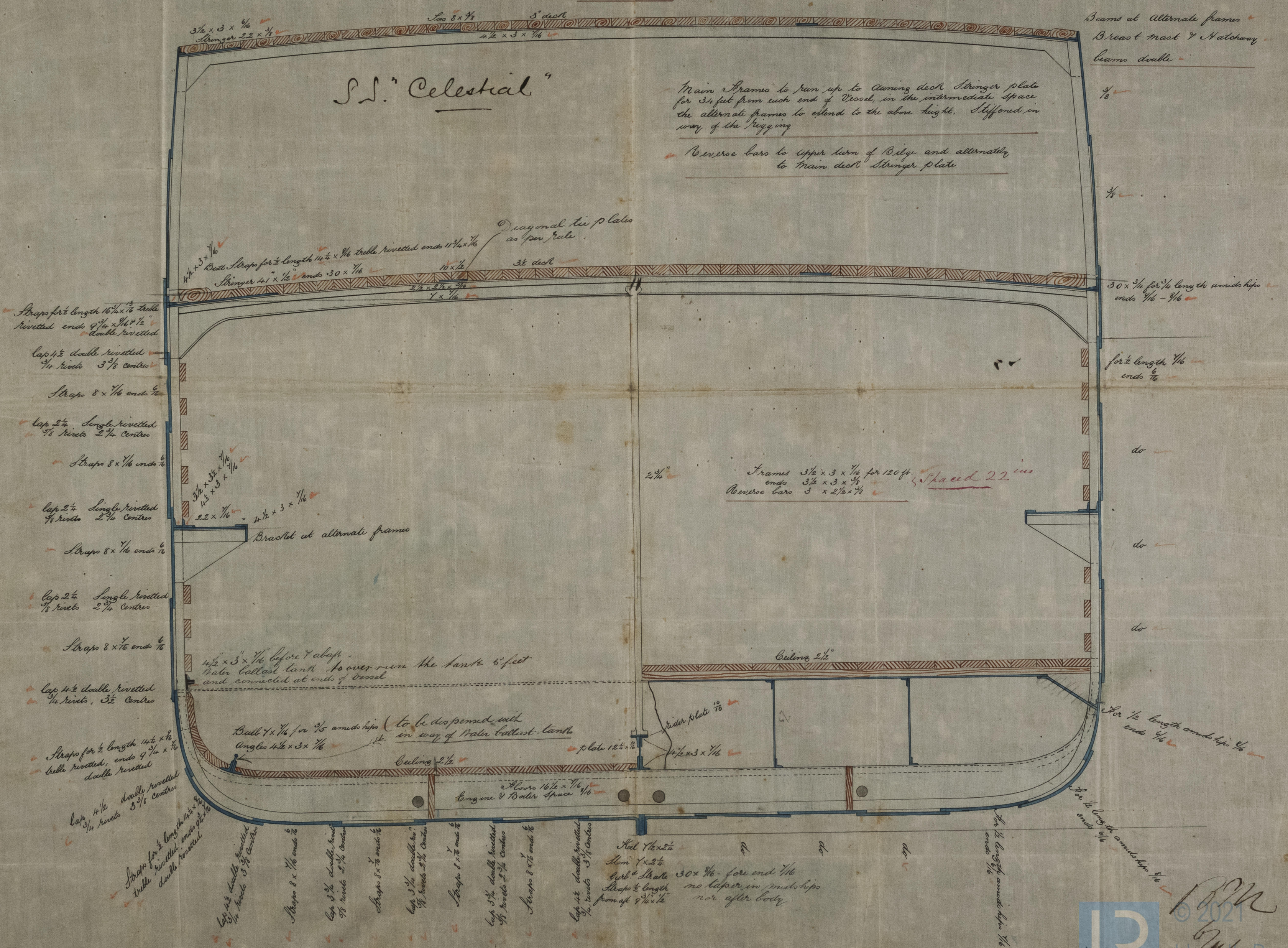
Running Decked

S.S. N<sup>o</sup>2  
To Class 30.1

1/2 moulded Breadth 13.80

Depth from upper part of keel	16.10
to top of main deck beam	
Girth of half midship frame	27.75
as per rule	
1 <sup>st</sup> Number	57.65
2 <sup>nd</sup> Number	11530.00

Equipment No. 13457



Beams at alternate frames  
Breadth mast & Hatchway  
beams double

Main frames to run up to running deck stringer plate  
for 34 feet from each end of vessel, in the intermediate space  
the alternate frames to extend to the above height. Stiffened in  
way of the rugging

Reverse bars to upper turn of Bilge and alternately  
to main deck stringer plate

Frames 3 1/2 x 3 x 1/4 for 120 ft.  
ends 3 1/2 x 3 x 1/4  
Reverse bars 3 x 2 1/2 x 1/4

30 x 1 1/2 for 1/4 length amidships  
ends 1/4 - 1/4

for 1/2 length 1/4  
ends 1/4

do

do

do

for 1/2 length amidships 1/4  
ends 1/4

for 1/2 length amidships 1/4  
ends 1/4

for 1/2 length amidships 1/4  
ends 1/4