

438 Len

J. J. Dahlia

SS. N<sup>o</sup> 50.

1/2 inch scale

Rec'd Building for 2/8/71  
P. J. J.

Rec'd 9/8/71

Length 300.0  
Breadth 34.6  
Upper deck to ceiling 25.0  
" " " " 25.2 1/2  
" " " " 27.0 1/2  
Main deck to keel 19.1 1/2

Three Decked  
100 H

1/2 Lint 39.5

1/2 beam 17.25

2/3 Upper Deck to keel 27.07

83.76

77.00

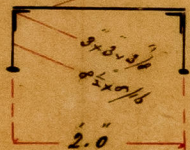
x 0.000 length 299.17

22964.28

1008 for  
Scantlings

It is recommended that in future all drawings submitted for approval to Lloyd's Committee be made on tracing cloth, to secure their preservation.

Section of Box Beams



Box beams as per section spaced about 24 ft apart in cargo holds in way of hatches. At ends of cargo holds bulk beams same as main deck beams spaced on alternate frames.

Reverse Frames 3x3x7/16 on every frame to main and upper deck alternately.

Rider 9x9x1/2  
19x13/16

3x3x7/16  
6x4x9/16  
9/16 Plate for 3/5 length

6x4x9/16 Bulk for 3/5 length

6x4x9/16 Plate for 3/5 length

Floor 32x9/16 for 1/2 length 8/16 to 8/16  
Ends 7/16. 10/16 in engine & boiler space

Frames 4x5x7/16 for 3/5 length ends

4x5x3x6/16 spaced 24 inches throughout

12/16 for 3/4 length  
9/16 at ends  
Tieble riveted in butts  
for 1/2 length

10/16 for 1/2 length  
9/16 to 3/4  
Ends 8/16

10/16 for 1/2 length  
9/16 to 3/4  
Ends 8/16

10/16 for 1/2 length  
9/16 to 3/4  
Ends 8/16

10/16 for 1/2 length  
9/16 to 3/4  
Tieble riveted in butts  
for 1/2 length

9/8/71



© 2021  
Lloyd's Register  
Foundation