

Tracing No 870

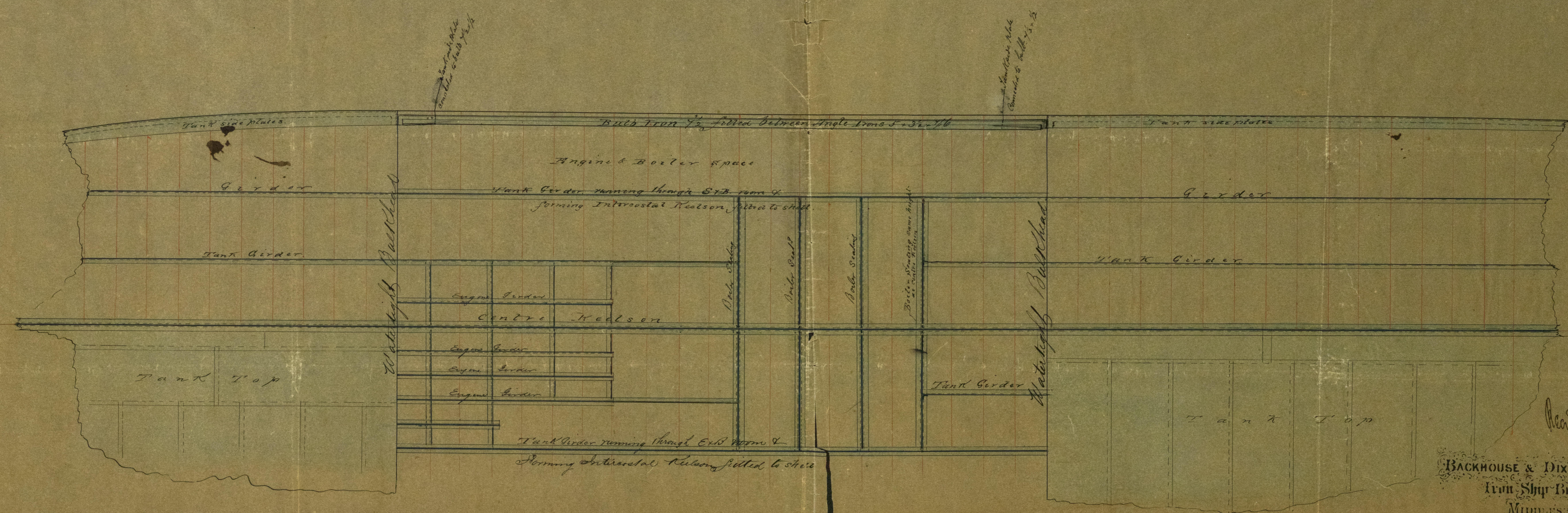
Dimensions
Length 220.0
Breadth 30.0
Depth 15.395.9
Class 90A

Sketch showing strengthening at Bilge in view of increased thickness of shell plating at Bilge amidships, as compensation for the vessels length being 1/2 longer than 14 depths.

Number 50.49 - Number 43.96
13.304 - 16.241

No. 71 S.S.

Rev 29/7/11



Rev 31/7/11

Rev 25/7/11 & 27/7/11

BACKHOUSE & DIXON
Iron Ship Builders
Middlesbrough-on-Tees

