

MIDSHIP SECTION

N<sup>o</sup> 180

## DIMENSIONS

S.S. "Mariveles" late Lotus.

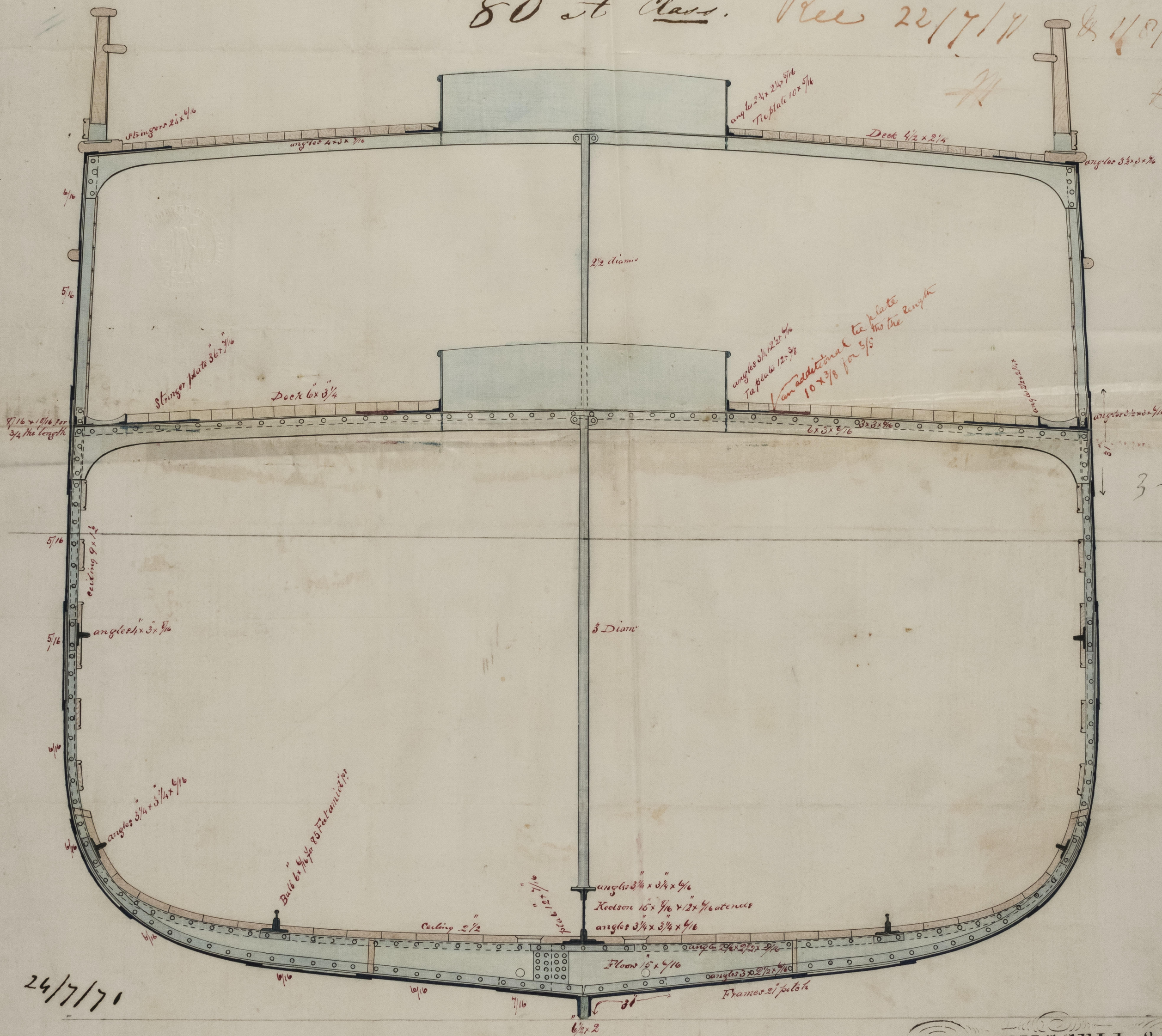
Length Twist perpendiculars —  $170' 0''$  — }  $8.70$  breadth  
Breadth Extreme —  $25' 1''$  — }  
Depth in Hold to Main Deck —  $12' 10''$  — }  $11.77$  depths  
Depth in Hold to Awning Deck —  $19' 4''$  — }  
N<sup>os</sup> for scantling —  $12.5 + 14.25 + 25.55$  — }

Length as per Rule	167.8
Breadth " " "	25.0
Depth from Top of Keel to Main Deck	14.25
Depth " " " " " Airing Deck	25.0
8 x 167.8	840.5

80 at Class.

Rec 22/7/11

Q 1/8/71



24/7/70

B.W.  
1/8/71

Scale  $\frac{1}{2}$  Inch to a Foot

HALL, RUSSELL & CO  
Engineers & Ship Builders  
ABERDEEN.

Lloyd's Register  
Foundation

IRON 504- 0220