

Class 100.A.

Half Breadth 14.50  
Depth 18.58  
Sirth 29.00  
Number 62.08

Length 208.00  
Number 12.912  
1291  
14203

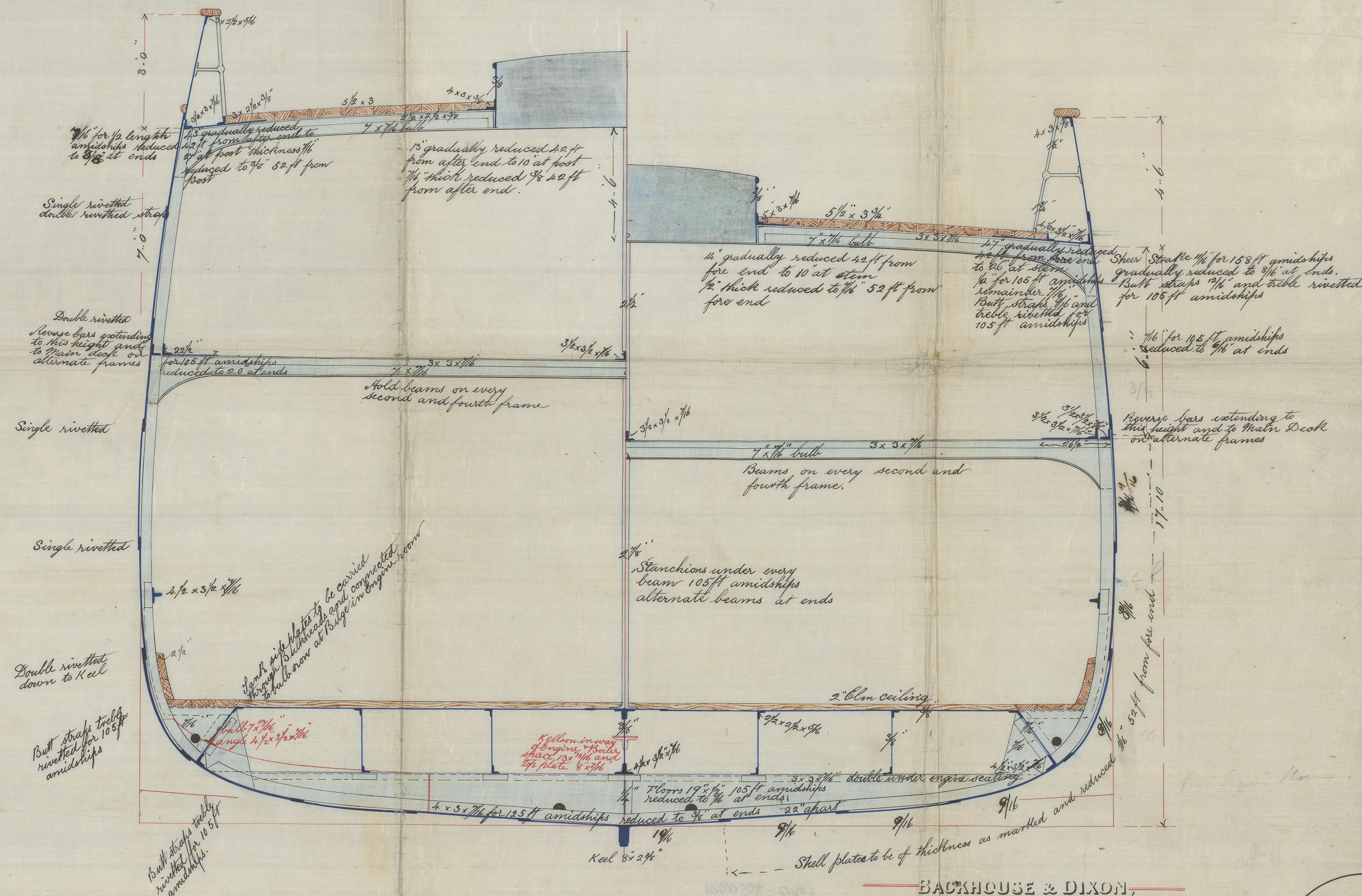
Report No 2993 S. S. "Oceano" Iron No 9382.  
MIDSHIP SECTION

S. S. No 67.

DIMENSIONS  
Length B.P. 210.0  
Breadth 29.0  
Depth 17.0  
890 TONS QM.

Tracing No 820

Stem 7"x2" reduced to 1"x1 1/4" 14 ft from head  
Screw Frame 10 x 3 1/4  
Forecastle Beams 5 x 3 1/2 x 3 1/2  
Do Stringers 20 x 1 1/2  
Four Watertight Bulkheads fitted  
between 4 x 3 1/2 Double frames  
Size of Bulkhead Plates 1/2  
do do Angles 3 x 3 1/2  
Rudder at Head 5 diam  
do Heel 3 do  
do Plates 3/4  
do one Forged Stay  
do Three Gudgeons



SCALE 1/2 OF AN INCH = 1 FOOT

BACKHOUSE & DIXON,  
IRON SHIP BUILDERS,  
MIDDLESBROUGH-ON-TEES.

1200504-0167



Iron No 9382

IRON 504-0167

