

S.L. Lisbon
Report No. 2994

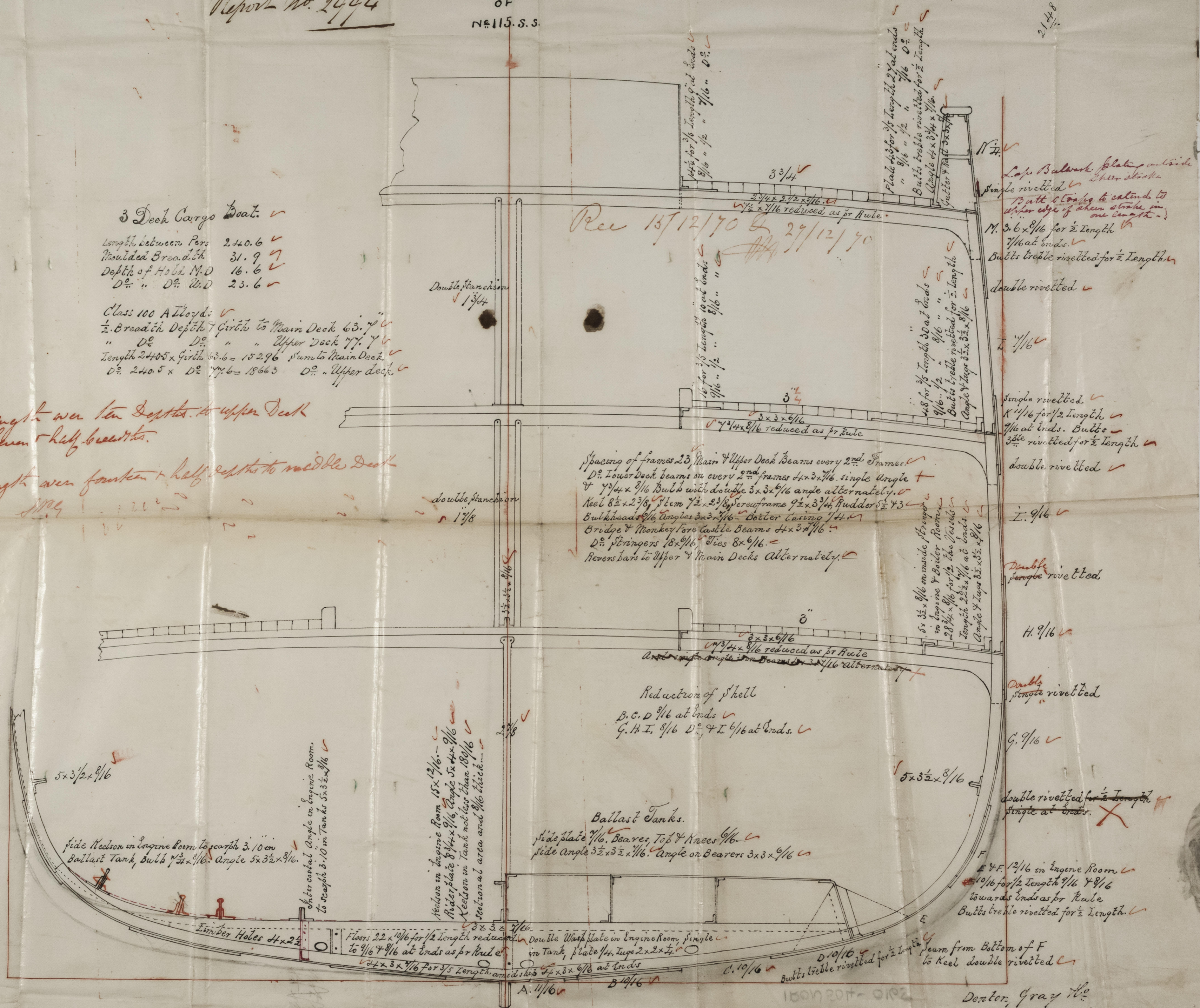
MIDSHIP SECTION
OF
No 115. S.S.

3 Deck Cargo Boat.
Length between Pairs 240.6
Shoulder Breadth 31.9
Depth of Hold M.D 16.6
D^o " D^o " W.D 23.6

Class 100 Alloyds
2. Breadth Depth 7 Girth to Main Deck 63.7
" D^o " " " Upper Deck 77.7
Length 240.5 x Girth 63.6 = 15296 Pairs to Main Deck
D^o 240.5 x D^o 77.6 = 18663 D^o " Upper Deck

Length over ten depths to upper Deck
+ sheer + half breadth.

Length over fourteen + half depths to middle Deck
+ sheer + half breadth.



Rec 13/12/70 & 29/12/70

Spacing of frames 23 Main & Upper Deck Beams every 2nd Frames.
D^o Lower Deck beams on every 2nd frames 4x2x1/16 single angle +
7/4x8x1/16 Butts with double 3x3x1/16 angle alternately.
Keel 8x2x2 3/8 Plank 7x2x2 3/8 Screwpine 9x2x3 3/4 Rudder 5x2x3
Bulkheads 9/16 Angles 3x2x1/16 Bolter Casing 1/4
Bridge & Monkey Fore Castle Beams 4x3x1/16
D^o Stringers 18x9/16 Ties 8x9/16
Revers bars to Upper & Main Decks Alternately.

Reduction of shell
B.C.D 9/16 at ends
G.H.I. 8/16 D^o & L 6/16 at ends.

Ballast Tanks.
Side plate 7/16. Beams Top & Knees 6/16
Side angle 3 1/2 x 3 1/2 x 1/16. Angle on Beams 3x3x9/16

Large Bulwark plating outside
Single rivetted
Butts & angles to extend to
upper edge of sheer stroke in
one length.
M. 3.6 x 8/16 for 1/2 length
7/16 at ends.
Butts treble rivetted for 1/2 length
Double rivetted.

Single rivetted.
K 1 1/16 for 1/2 length
7/16 at ends. Butts
3/16 rivetted for 1/2 length
double rivetted.

I. 9/16
Double
single rivetted

H. 9/16
Double
single rivetted

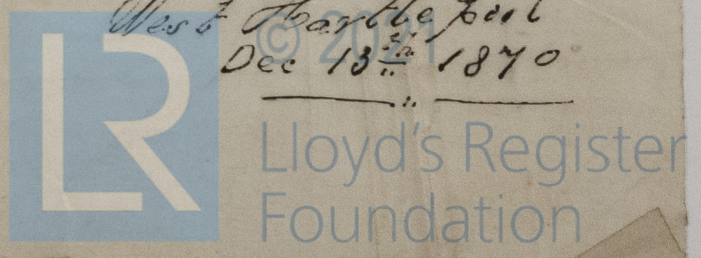
G. 9/16
Double rivetted for 1/2 length
single at ends.

E & F. 1 1/16 in Engine Room
10/16 for 1/2 length 9/16 & 8/16
towards ends as for Rule
Butts treble rivetted for 1/2 length.

Beam from Bottom of F
to Keel double rivetted
C. 10/16
Butts treble rivetted for 1/2 length
D. 10/16
A. 11/16 B. 10/16

Dexter, Gray & Co
Dock Yard

West of Chartwell
Dec 13th 1870

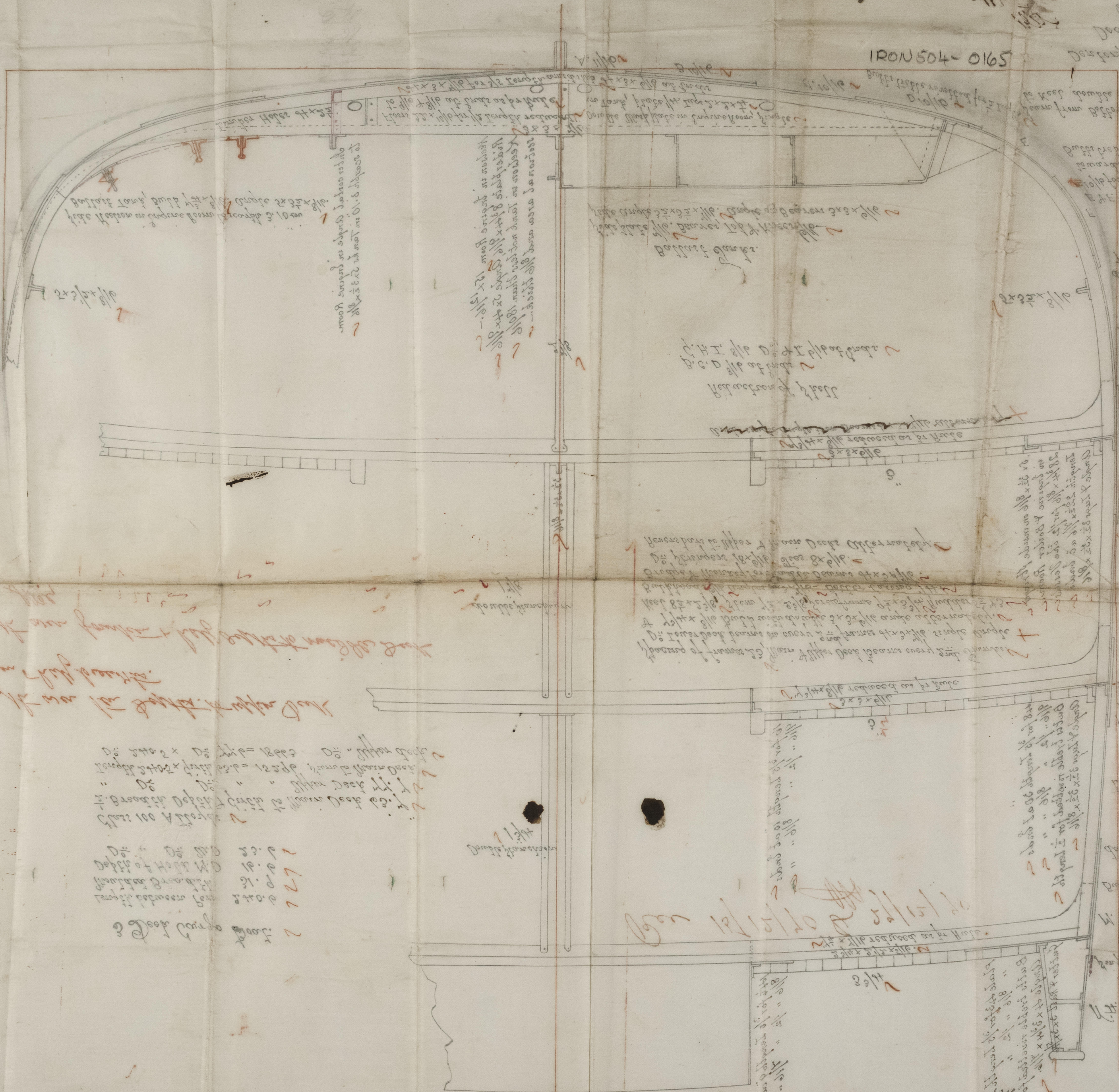


IRON 504-0165

Lisbon

9381 Iron 11/10

IRON 504-0165



Handwritten notes in red ink, likely describing the structure or its components.

Handwritten notes in black ink, likely describing the structure or its components.

WIDSHIP SECTION