

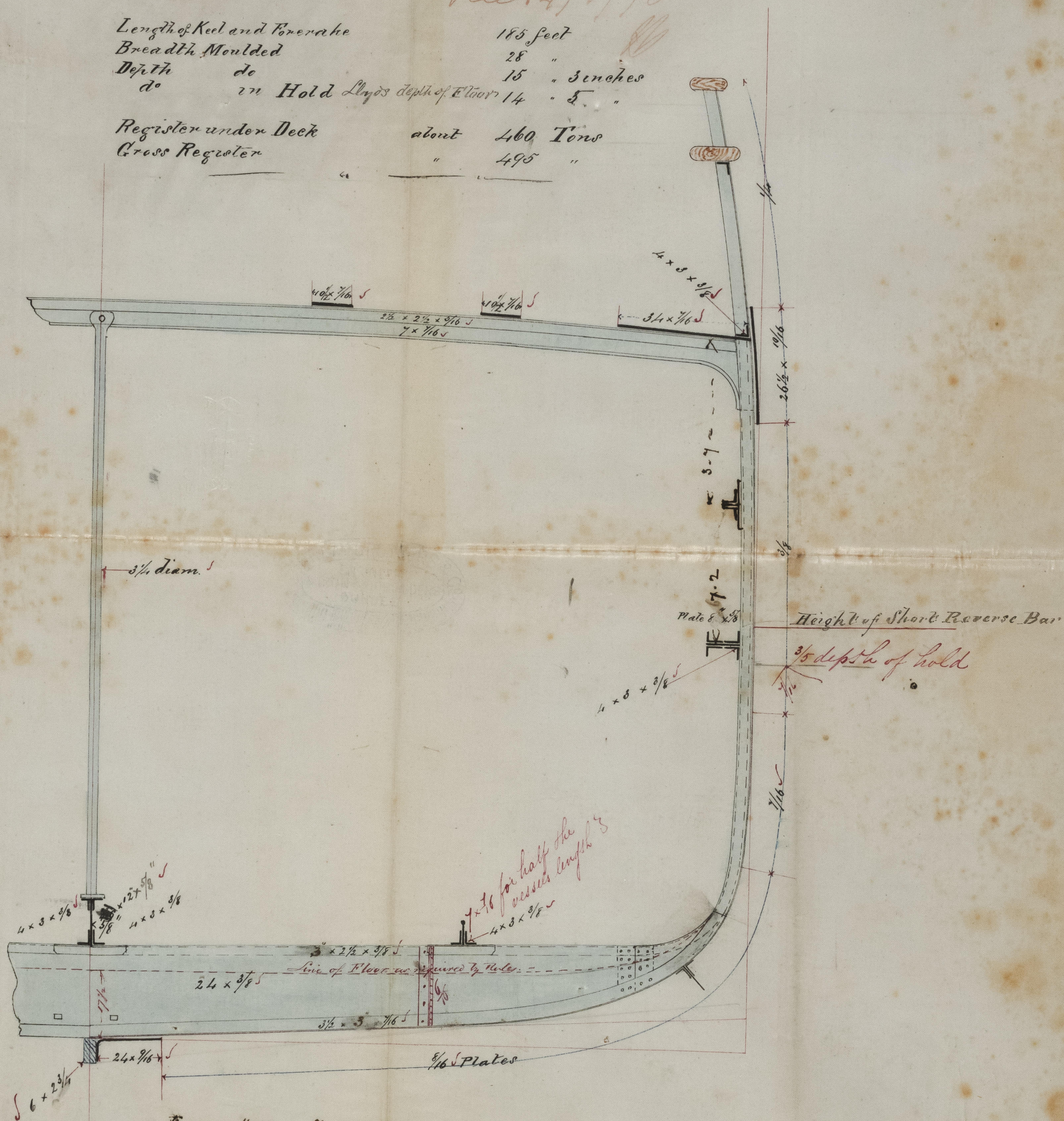
Screw Steamer N^o 45

Scale $\frac{1}{2}$ inch = 1 foot

Rec 14/1/70

Length of Keel and Fore rake	185 feet	
Breadth Moulded	28 "	
Depth	15 "	3 inches
do in Hold	14 "	5 "
Lloyd's depth of Floor		

Register under Deck	about	460	Tons
Gross Register	"	495	"



in Eugene Hotel & Tank. approx.
 floor was once carried level across
 26 1/2' ft deep in center before & shaft 24"
 Tank

14. H. Lawt. 1700
A. B.