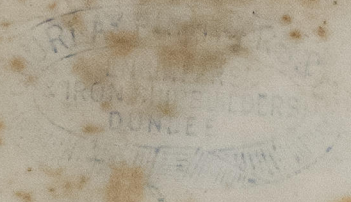


12<sup>th</sup> Jan 1870



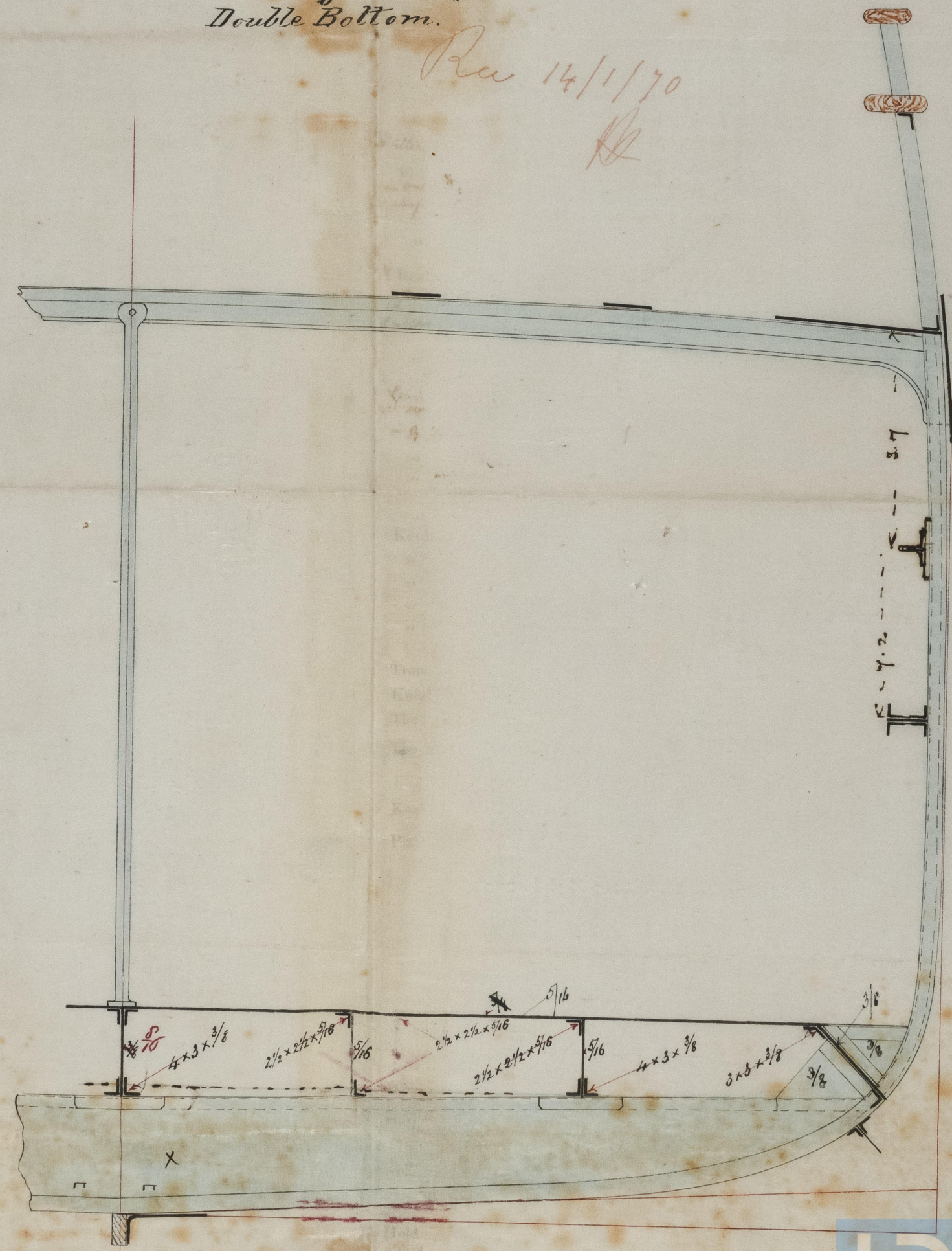
# MIDSHIP SECTION

Screw Steamer N<sup>o</sup> 45

Scale 1/2 inch = 1 foot

Shewing arrangement of  
Double Bottom.

Rev 14/1/70  
R



Clamp plate 12 x 3/8  
2 1/2 x 3 x 5/8 with wing Cdn. sh. plate  
curved forward 4' below

14<sup>th</sup> Jan 7/70  
B.D.

\* Floor plates laid across to 26 1/2" deep at Center  
in Engine Hold & Tank space. S.A.



© 2021  
Lloyd's Register  
Foundation

1R00502-0287