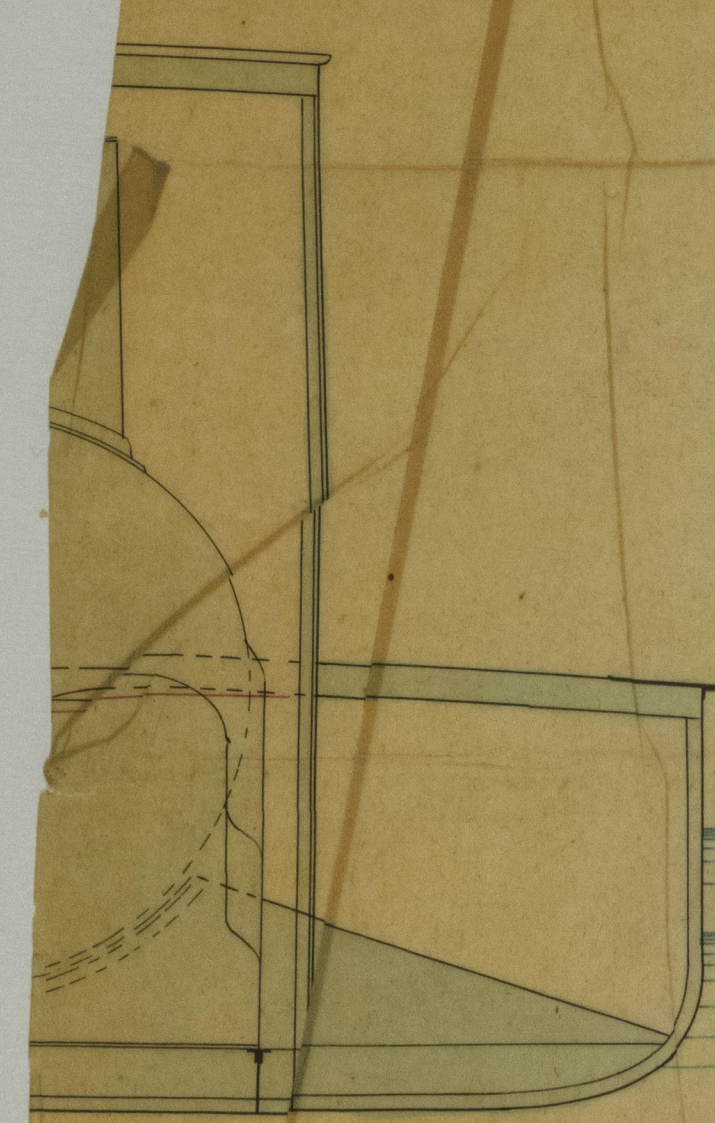
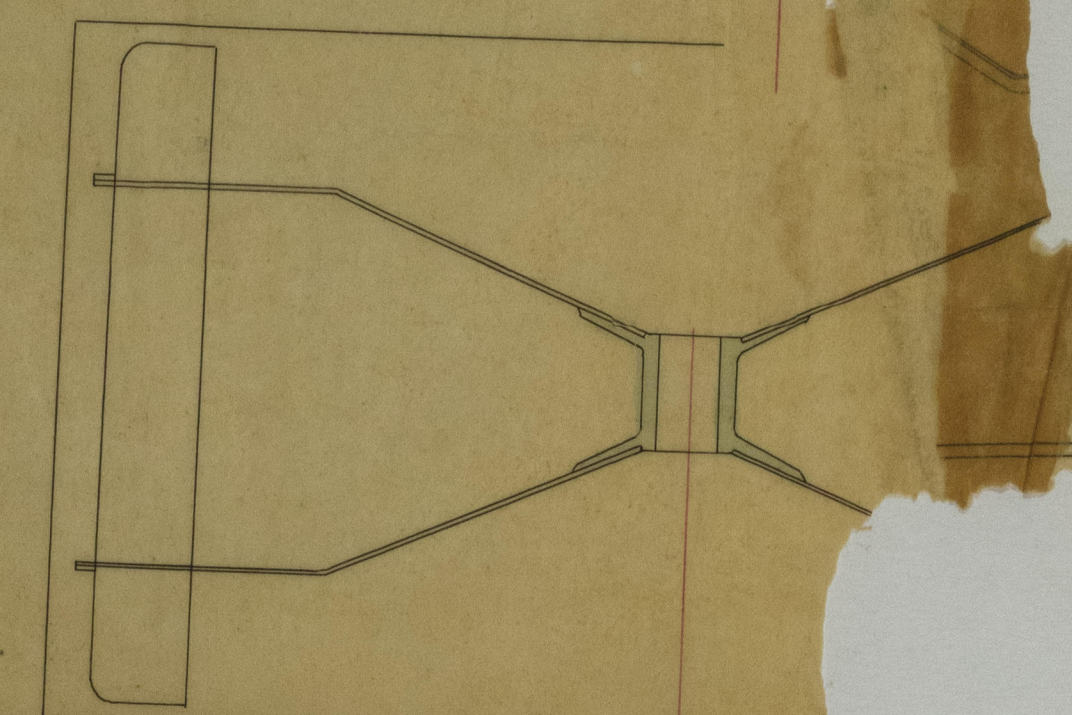
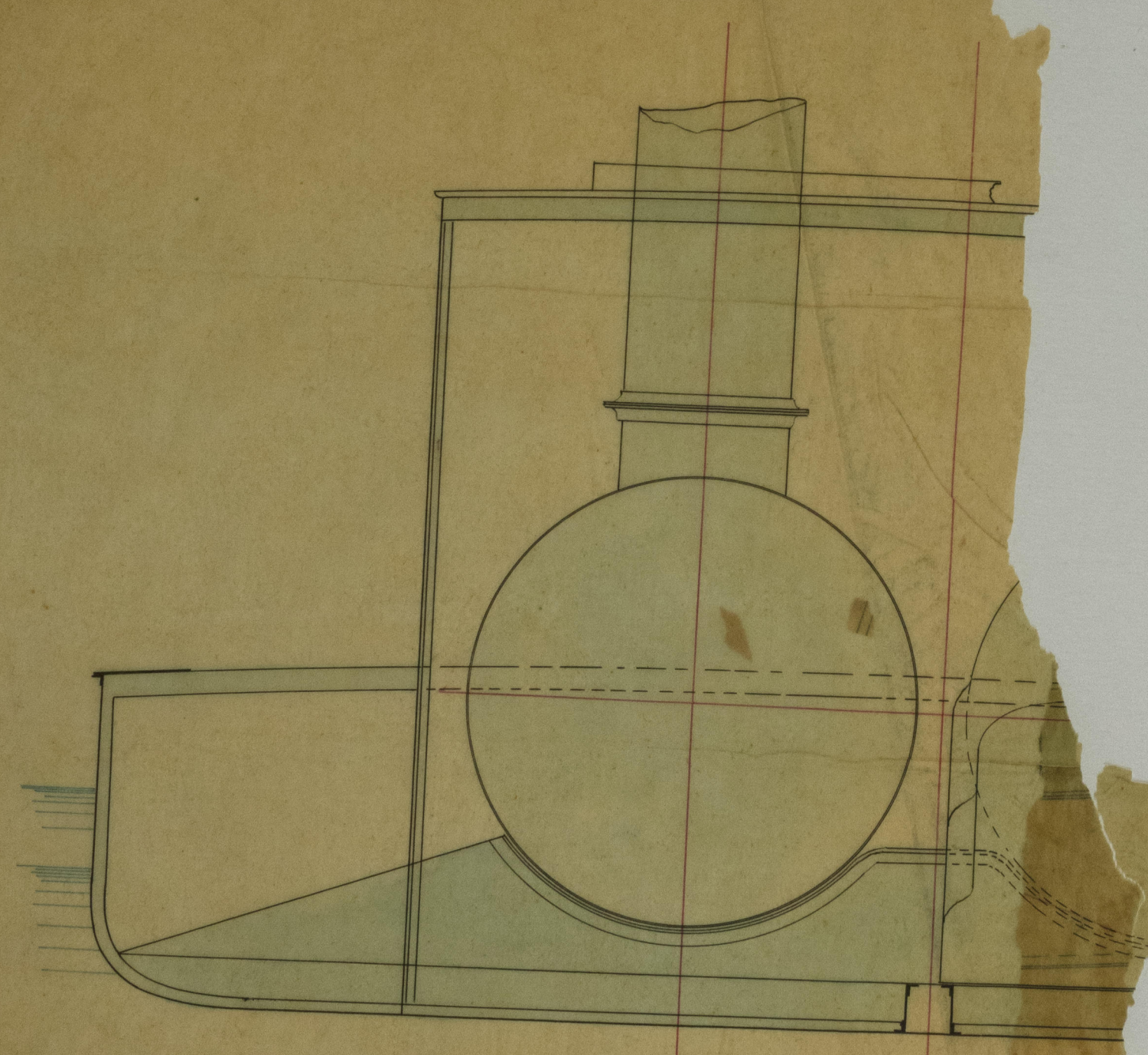
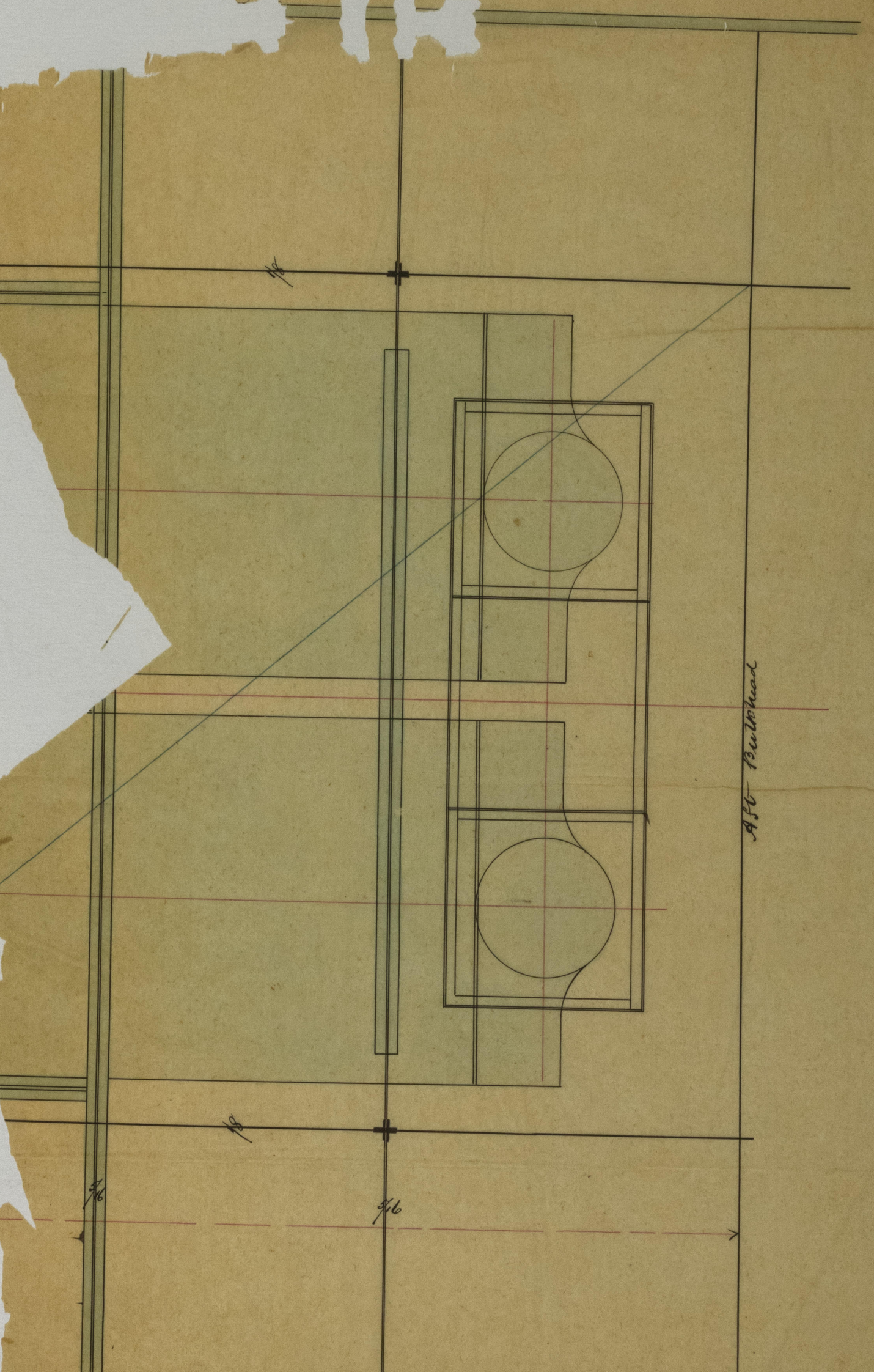
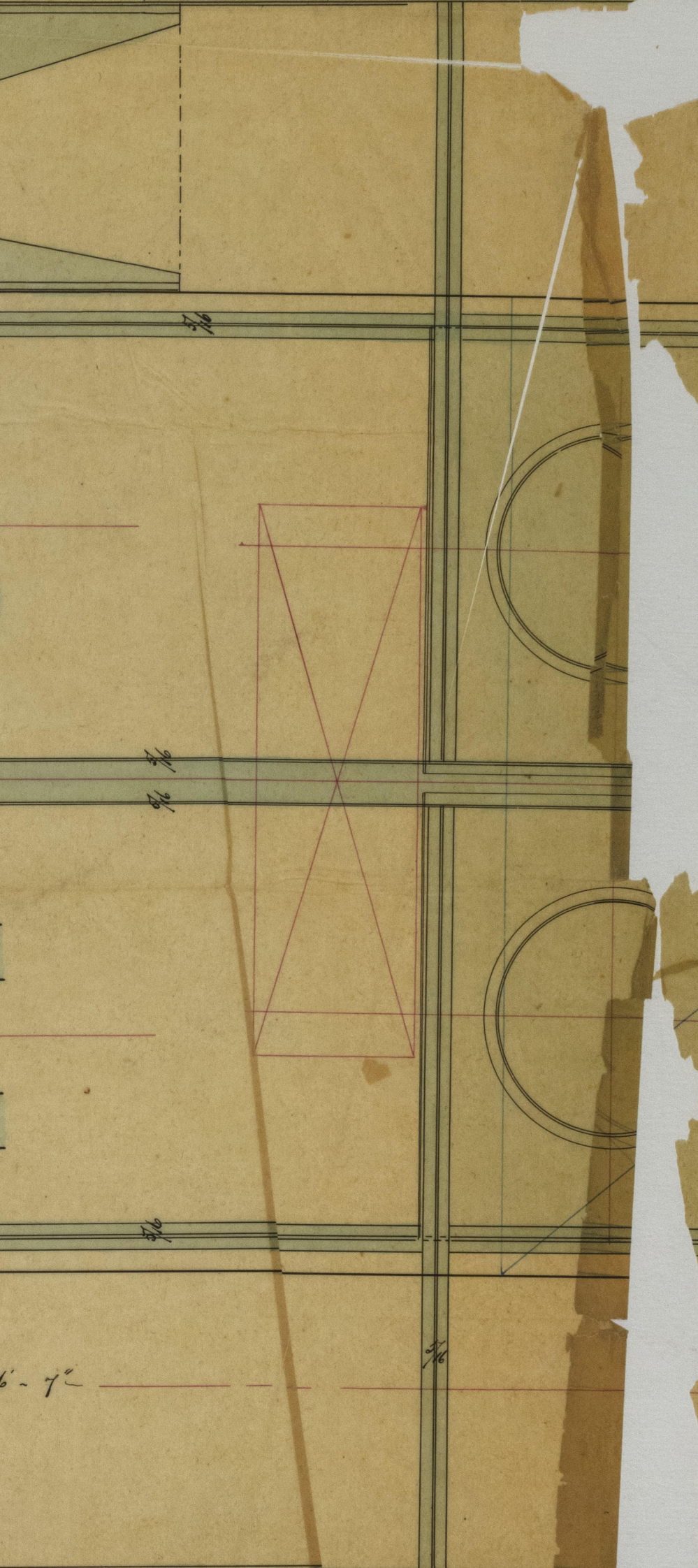
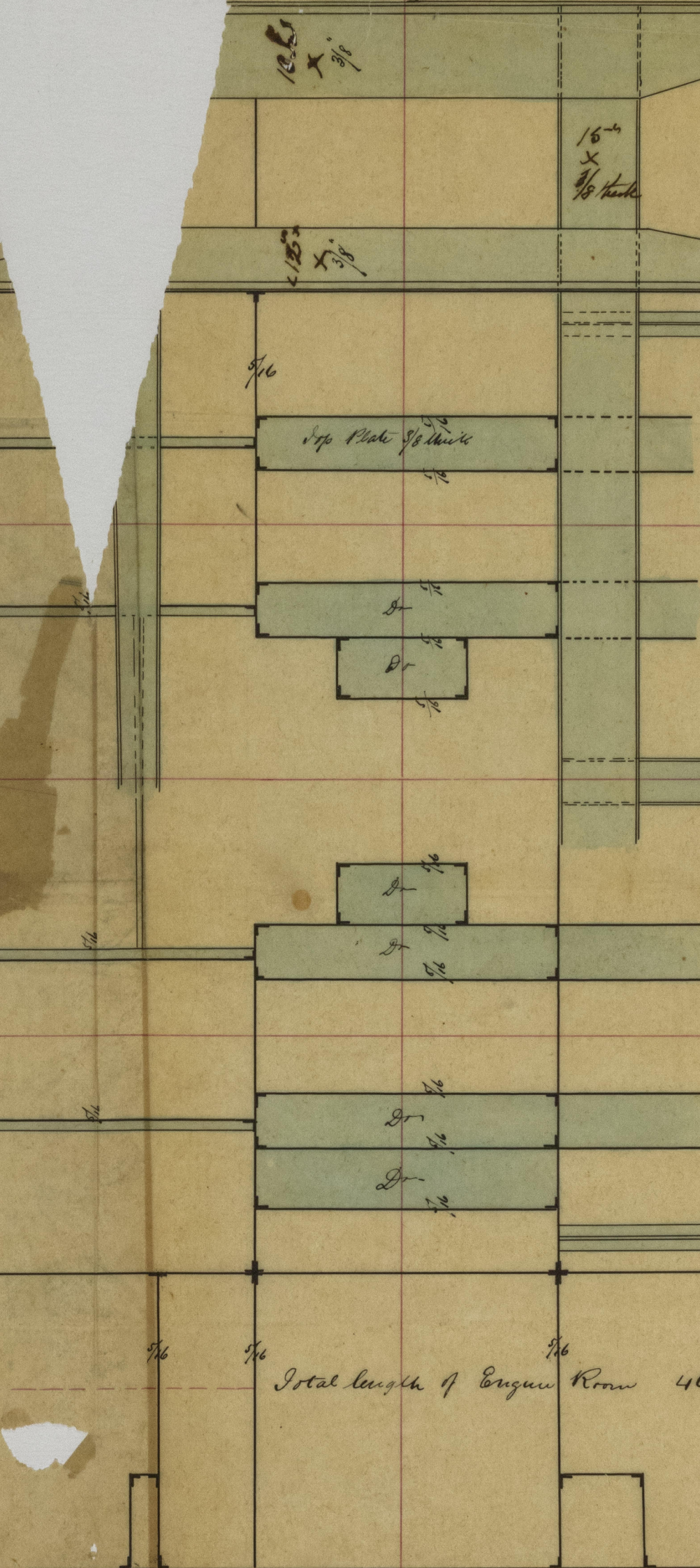
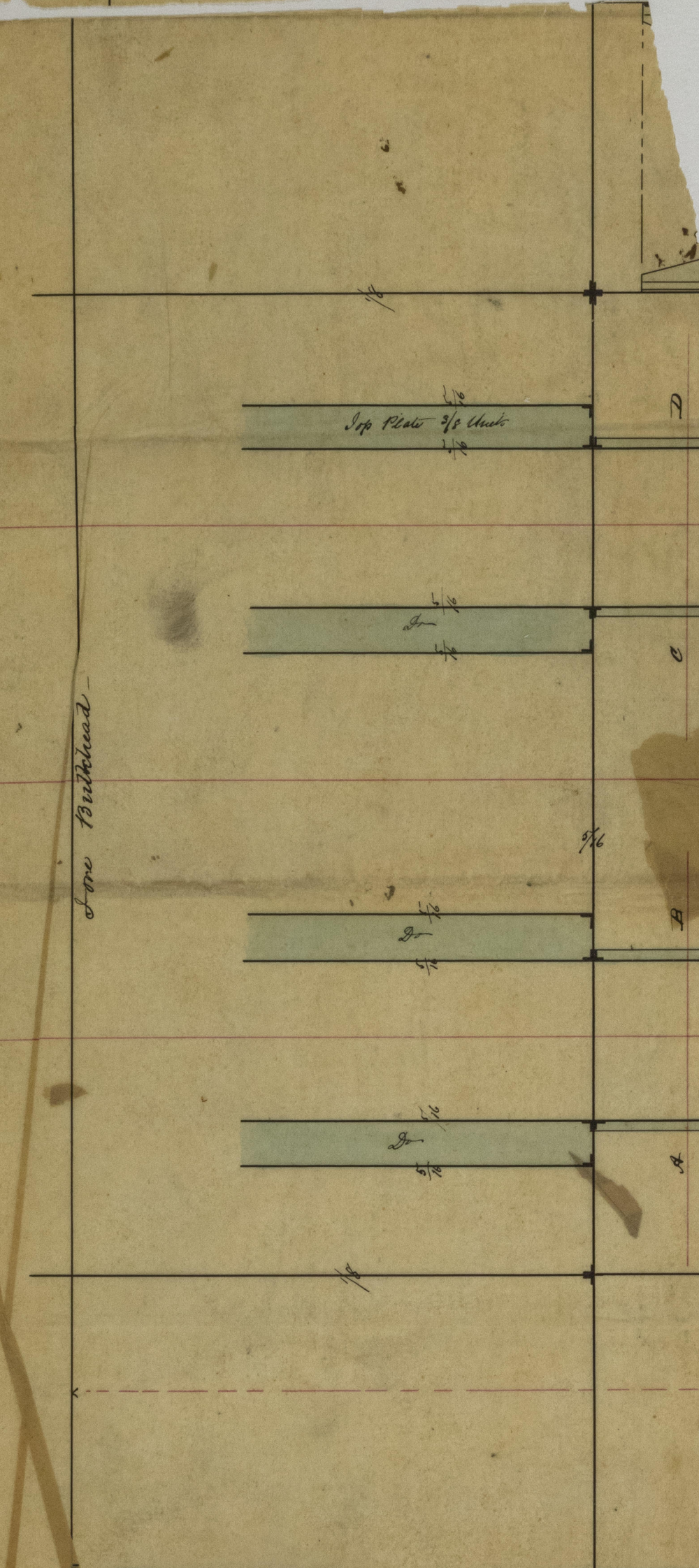
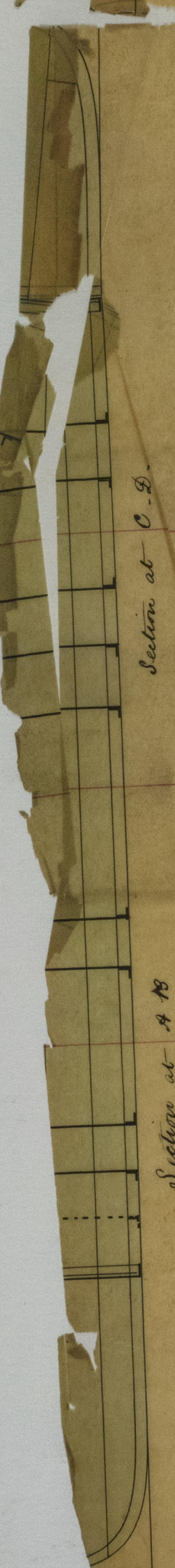


2864 Iron

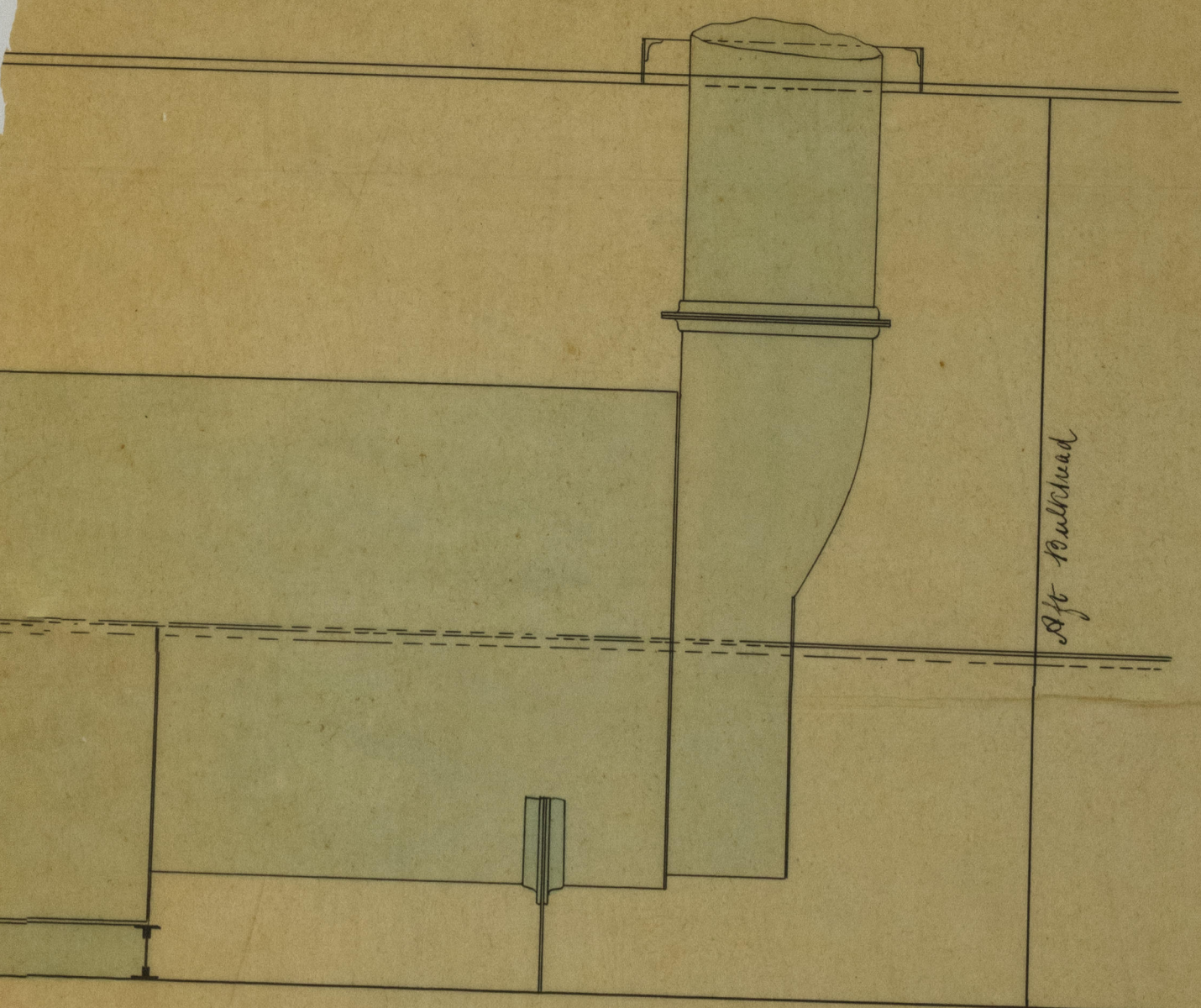


Top plates of Nutsome 3/8 thick side plates 1/2
and 2 1/4 thick iron
Nuts in top and sides of Nutsome and Plate
to be considered



Total length of Engine Room 46' 7"

2864 Iron



City of London
CROSS SECTION PLAN and ELEVATION of ENGINE ROOM
for a pair of Marine Steam Engines
of the
COLLECTIVE POWER of 70 HORSES
Scale 1/2 in to a foot

Section of

Handwritten notes at the top of the page, including the word "Iron" and a circled "B".

IRON 498-0168

Vertical handwritten text on the left margin, possibly a date or reference.

Handwritten mathematical expression: $2 + 2 + \frac{1}{2}$



© 2021

Lloyd's Register Foundation