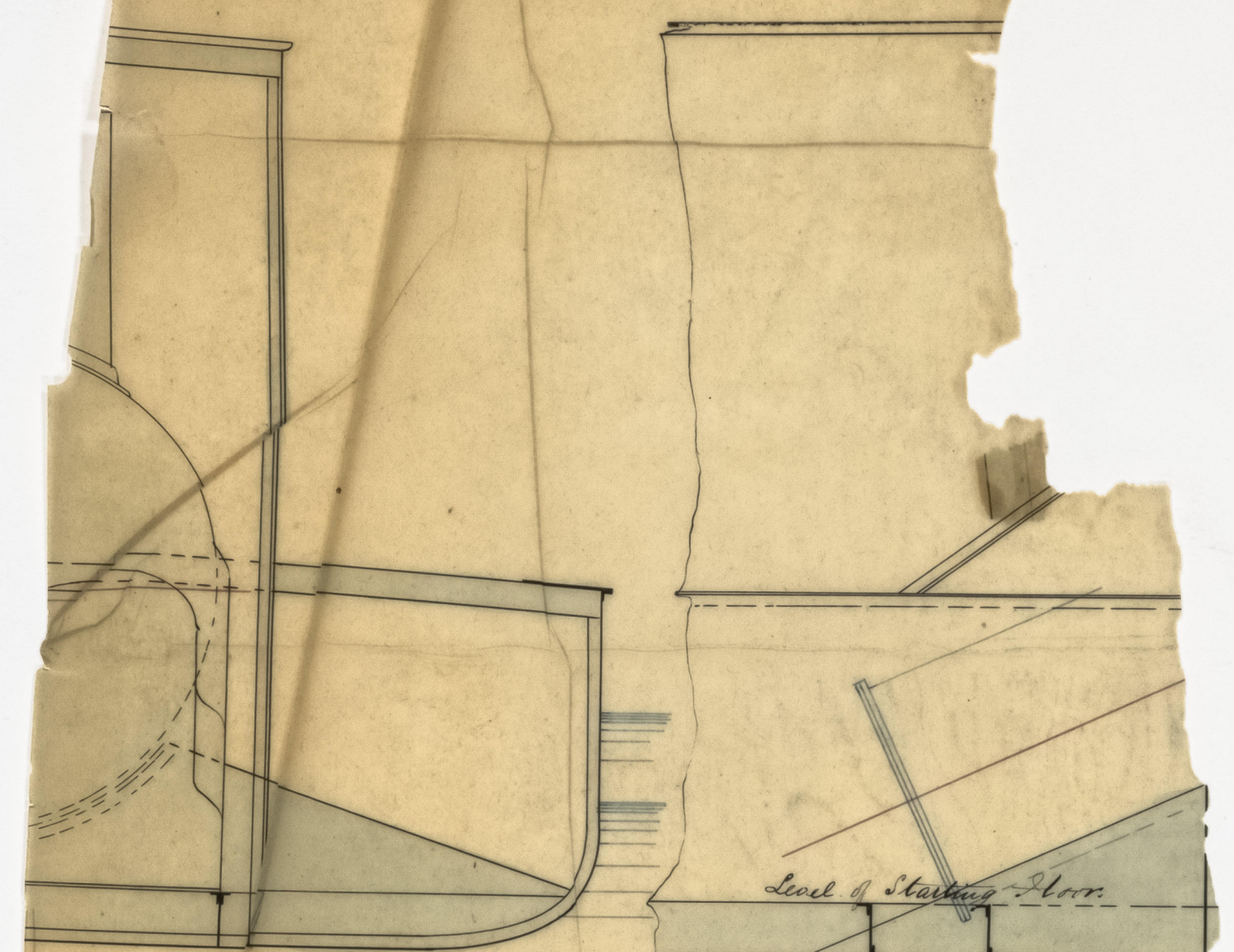
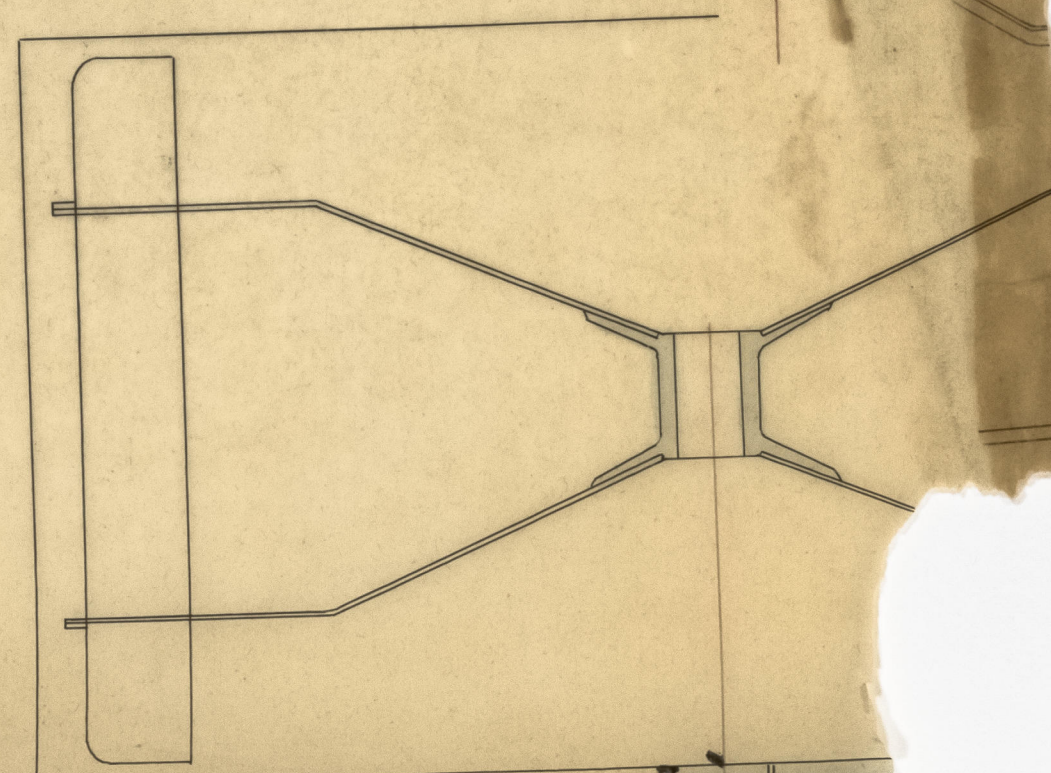
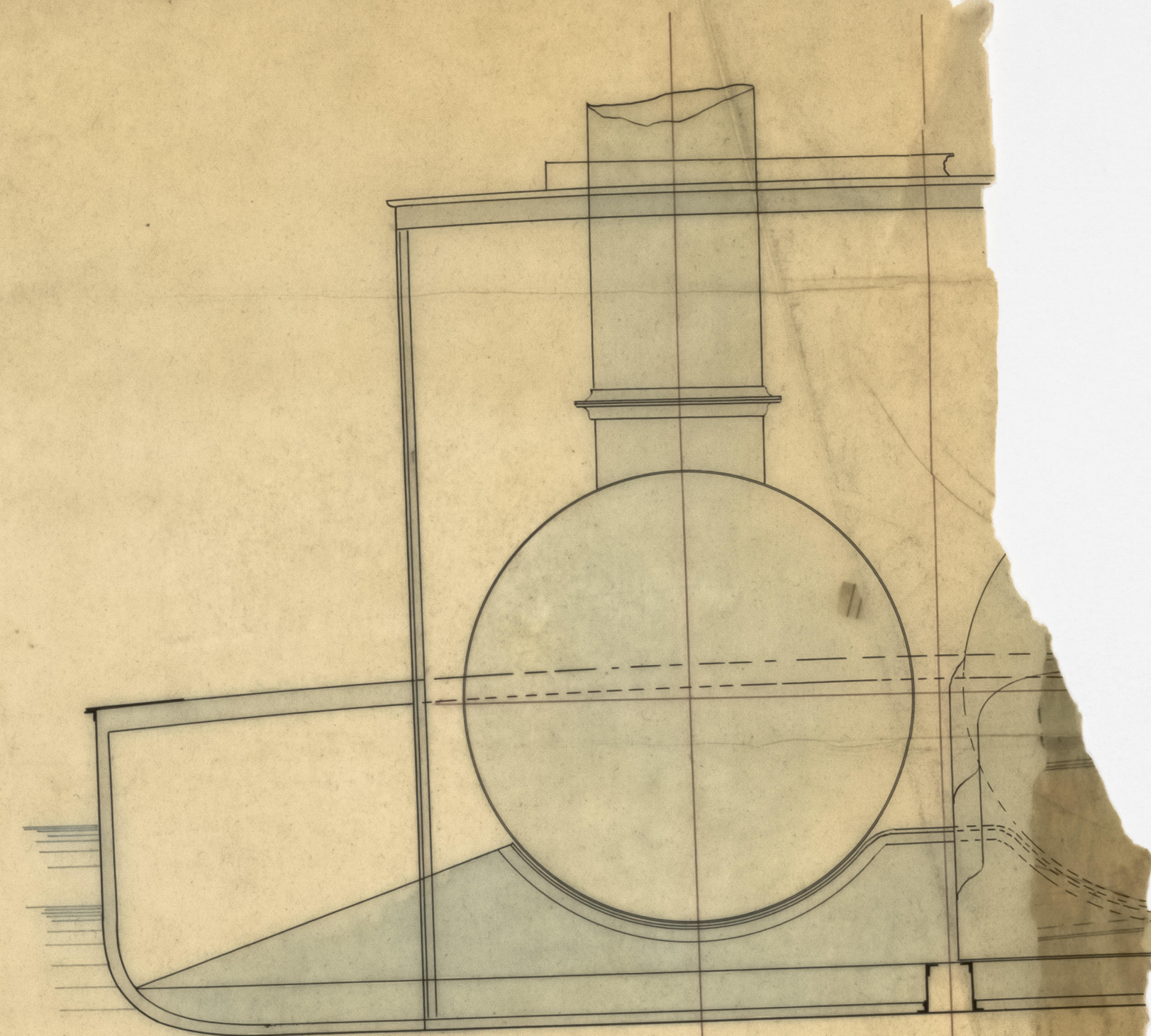
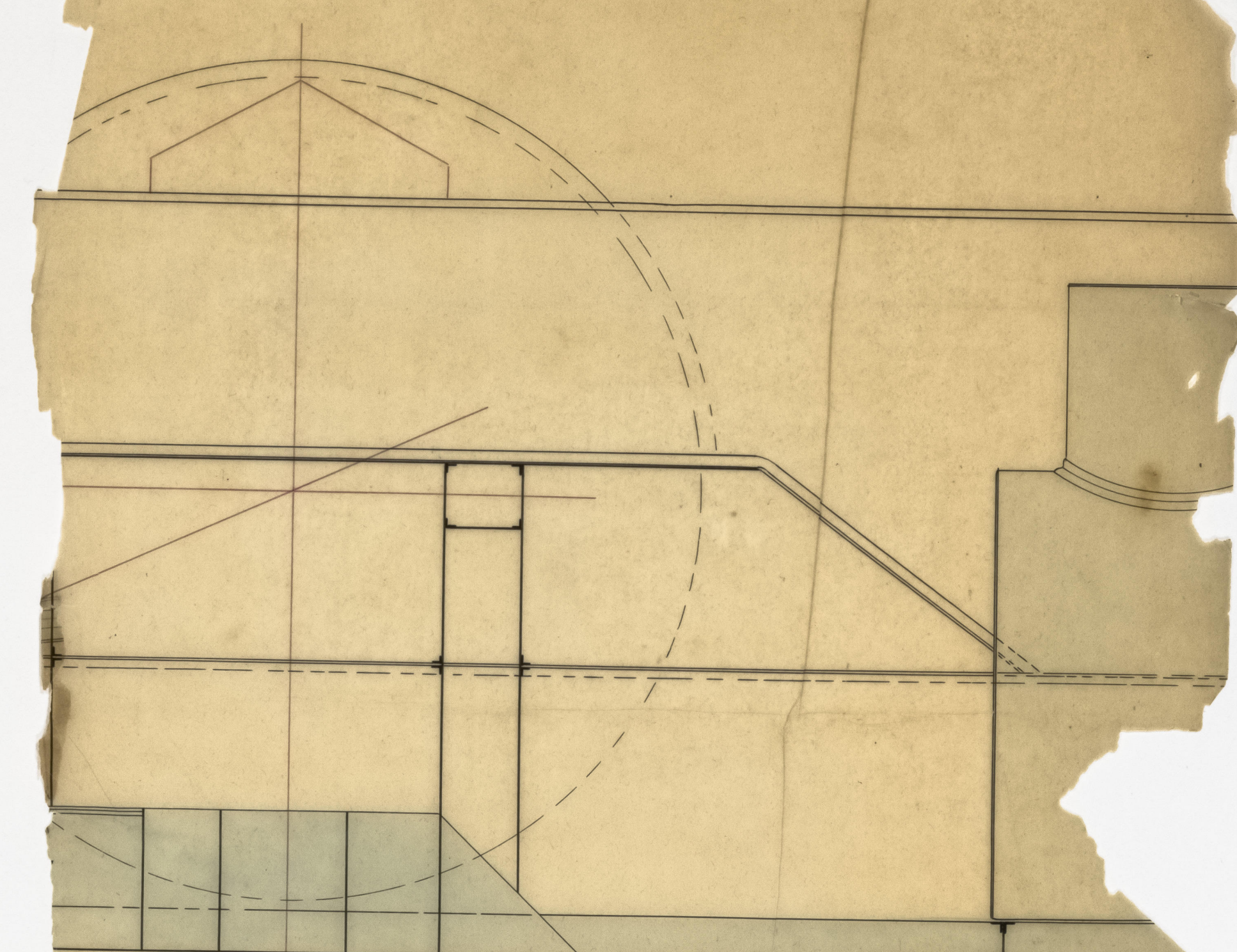


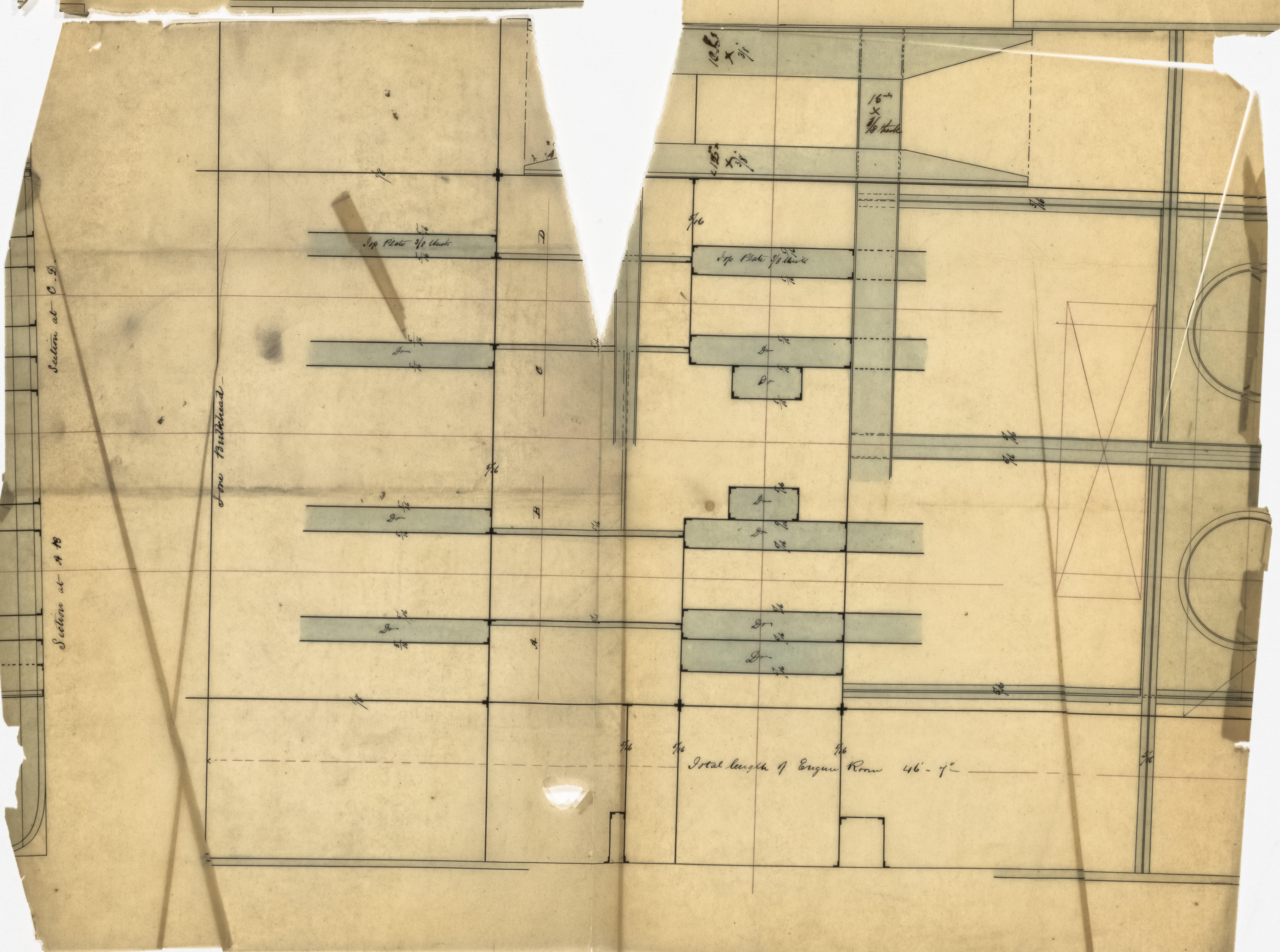
2864 Iron



Top plate of Piston 7/8 thick side plates 5/8 and 2 1/4 Angles iron
Rods in top and sides of Piston and Rods to be counter sunk



Section of 1/2



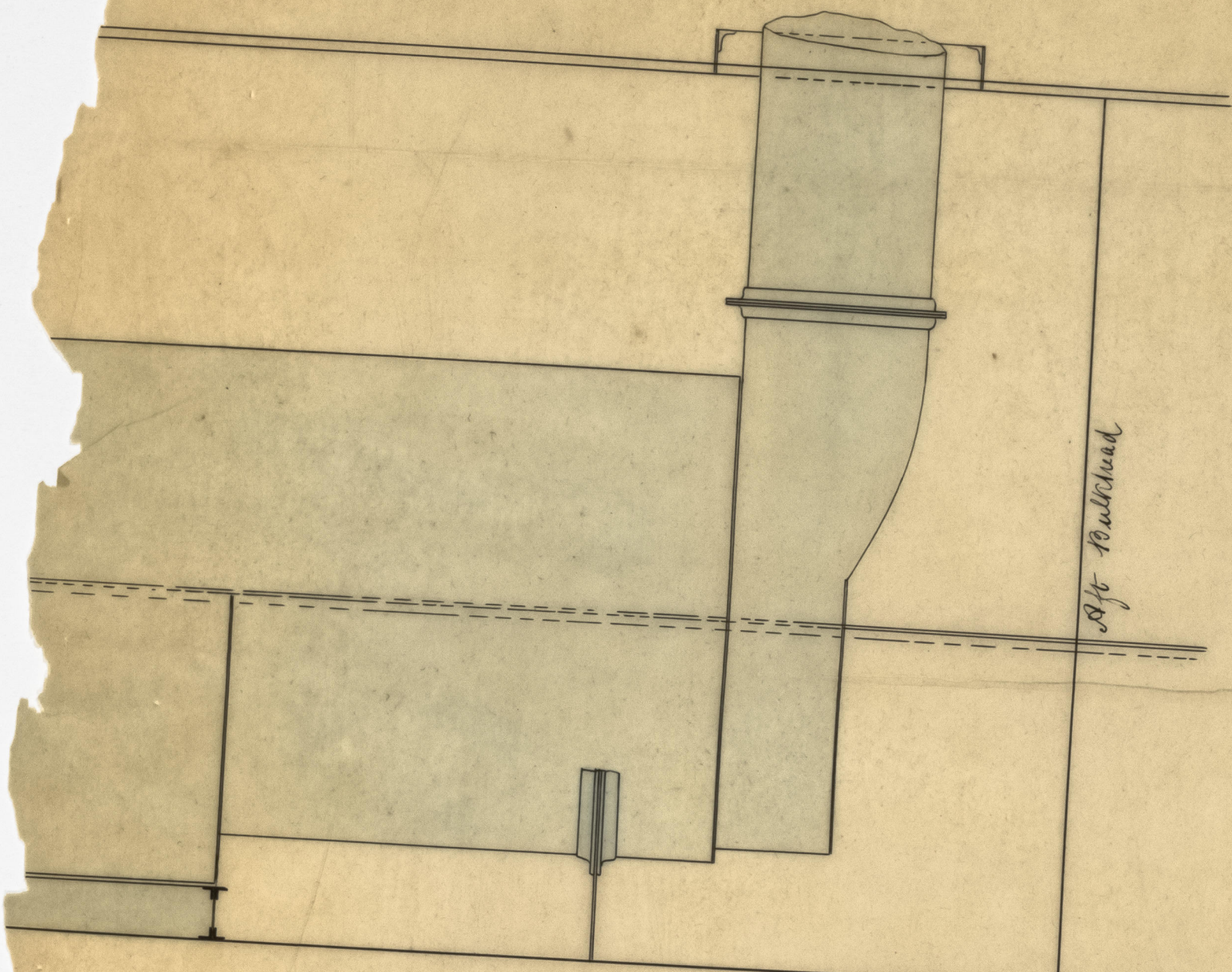
Section at C-D

Section at A-B

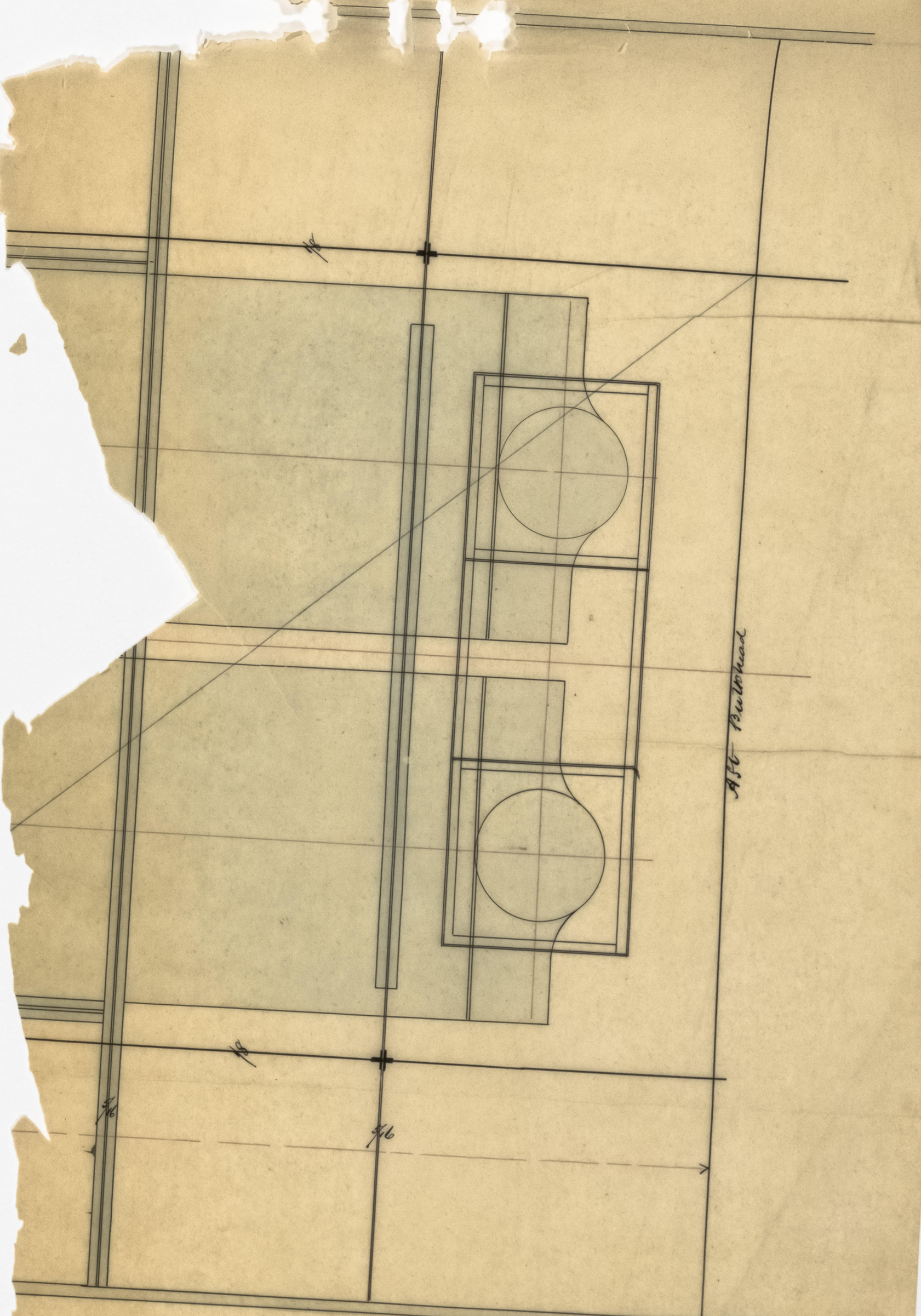
Long Piston Rod

Total length of Engine Room 46' 7"

2864 Iron



City of London
Cross Section PLAN and ELEVATION of ENGINE ROOM
For a pair of Marine Steam Engines
of the
COLLECTIVE POWER of 70 HORSES
Scale 1/2 inch to a foot

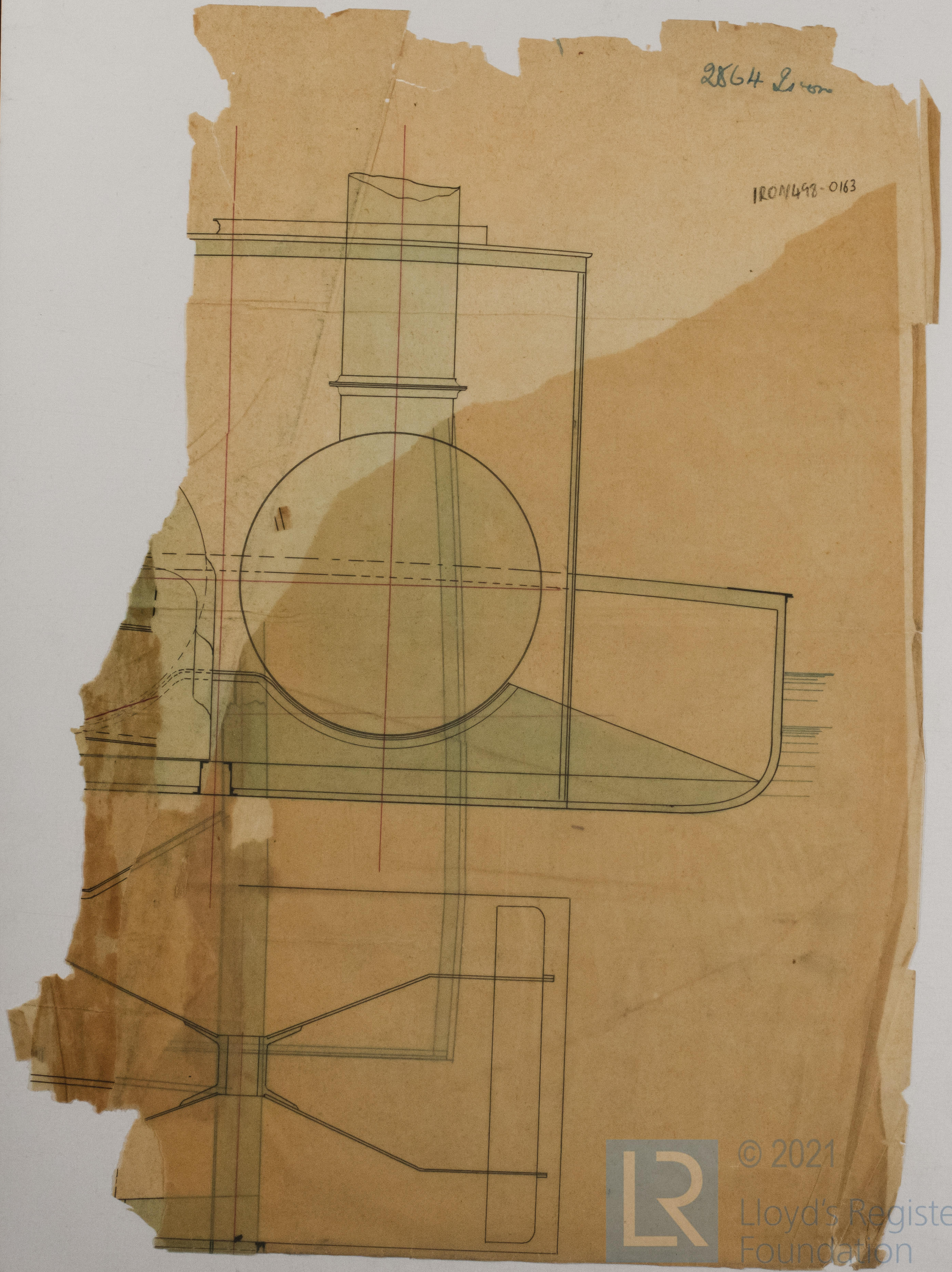


Long Piston Rod

IRON 498-0163

2864 L. 1870

IRON 498-0163



© 2021

Lloyd's Register
Foundation