

Engineers
and

(304 V.)
Delivery Form B

THE ELECTRIC AND INTERNATIONAL TELEGRAPH COMPANY

X.P. - You are requested to give an
attest to the Manager, and in a
charge beyond those stated in this

Ones in London at which Messages are received and forwarded

POSTAL TELEGRAPH, TELEPHONE, CABLE, AND RAILWAY

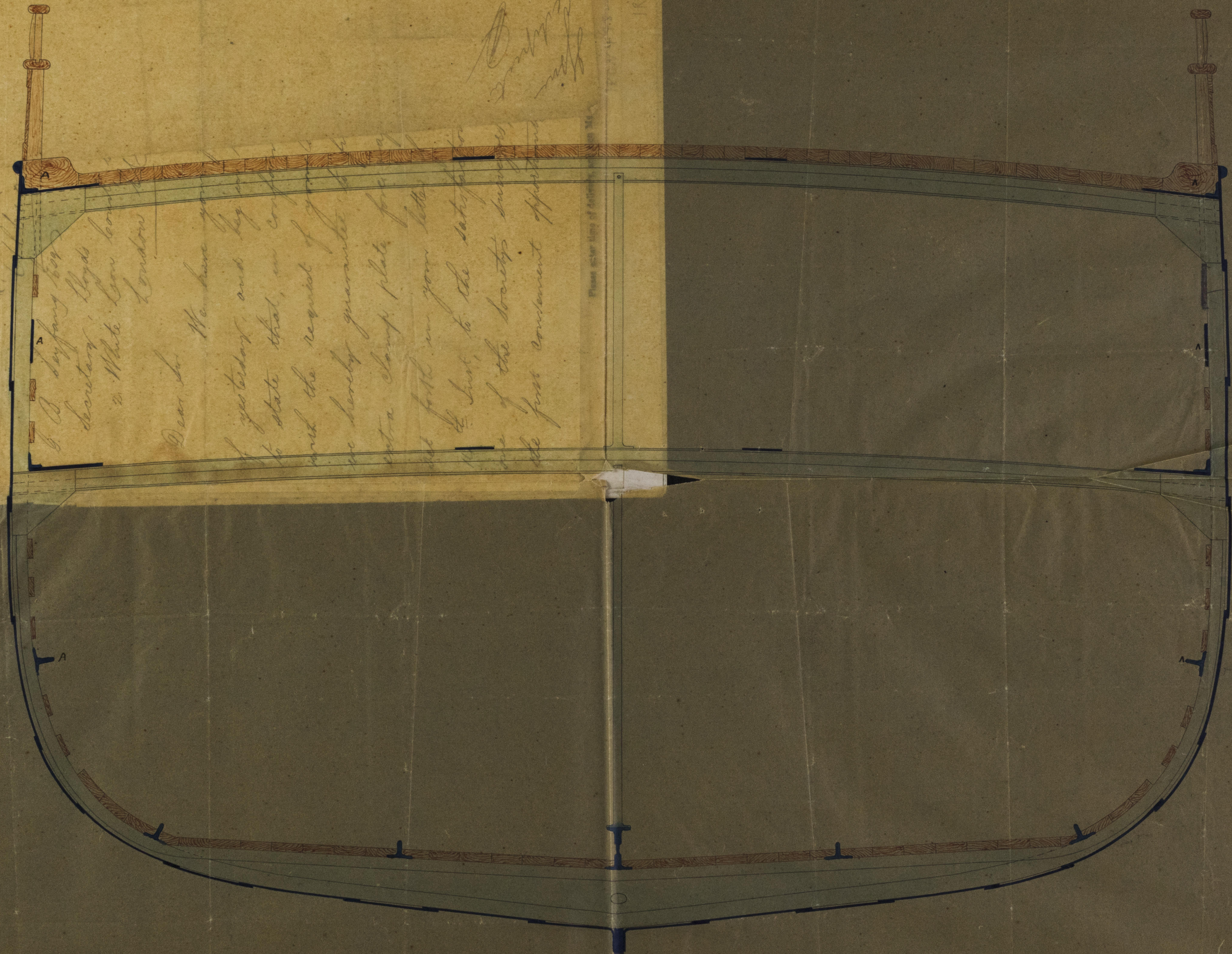
MAINTENANCE ENGINEERS

Engineers

Cable Telegraphs

Tele. Post. Co.

Tele. Post. Co.



Midship Section No. 4

Scale 1/2 Inch

Steamer 'ADP'



© 2001

Lloyd's Register
Foundation

RGV 492-0203