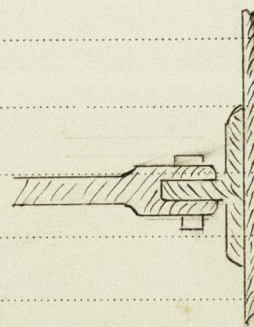
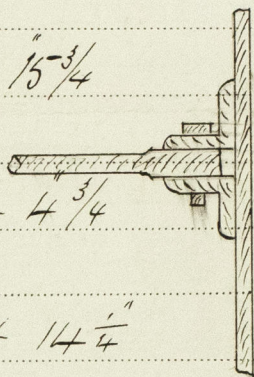


20653 Iron
Port Cardiff March 1878
Tails of Main Boilers of the Steam Ship "Lunis" 887 tons

Diameter 10' 6" Length 9' 9"
Thickness of shell plates $\frac{7}{8}$ "
Description of riveting of longitudinal joints Lap, tube chain of circumferential joints Single, double at ends
Pitch of rivets ditto $3\frac{1}{4} + 2$ ditto $2\frac{1}{4}$ "
Diameter of rivets ditto 1" ditto 1"
Pitch of plating ditto $6\frac{1}{2}$ " ditto 3" + 5"
Pitch of manholes in circular shell 11" x 15"
How compensated for Ring 4" + $\frac{1}{2}$ "
Number of furnaces in boiler Two
Diameter of furnaces 3 ft Length of furnaces 6' 9"
Thickness of furnace plates $\frac{1}{2}$ "
Description of joint of furnaces lap
Whether strengthened with rings No Greatest length between rings "
Thickness of combustion chamber plating $\frac{1}{2}$ "
Diameter of screw stays to ditto $1\frac{3}{8}$ " pitch of stays 9" + 9"
End plates, thickness $11\frac{1}{16}$ "
Diameter of longitudinal stays to end plates $1\frac{7}{8}$ " sq pitch of ditto $15\frac{3}{4} + 15\frac{3}{4}$
How stays are secured as per sketch
Diameter of tubes $3\frac{1}{2}$ " pitch of tubes $4\frac{3}{4} + 4\frac{3}{4}$
Thickness of tube plates $\frac{3}{4}$ "
Stayed by Tubes pitch of stays $14\frac{1}{4} + 14\frac{1}{4}$
Description of steam receiver Vertical
Diameter of ditto 4 feet length of ditto 4 feet
Thickness of plating of ditto $\frac{1}{2}$ " ends $\frac{1}{2}$ "
Stays, how stayed By 4 Stays secured as per sketch



Chambers Jacobs

Engineer Surveyor to Lloyd's Register of Shipping.

20653 2104



© 2019

Lloyd's Register
Foundation