

Port

19371 Iron Hull September 27<sup>th</sup> 1911  
Laimis 226 tons

Details of Main Boilers of the Steam Ship

Diameter

10' 6" outside  
13 1/16"

Length

10' 2"

Thickness of shell plates

Description of riveting of longitudinal joints

Double butt straps -  
3 1/2"  
15 1/16"

of circumferential joints

Lap joint, double riv.  
3 1/4"  
1 1/16"  
5 1/2"

Pitch of rivets

ditto

ditto

Diameter of rivets

ditto

ditto

Lap of plating

ditto

ditto

No.

Size of manholes in circular shell

Steam dome 13' x 17'

How compensated for

by ring 6" x 1/2"

Number of furnaces in boiler

2

Diameter of furnaces

3' 0"

Length of furnaces

7' 0"

Thickness of furnace plates

1/2"

Description of joint of furnaces

Welded 6" below centre

Port

Whether strengthened with rings

Yes -  
1/2"

Greatest length between rings

6' 6"

Report (if any) on Hull of Vessel.

Thickness of combustion chamber plating

1 3/16"

Diameter of screw stays to ditto

5/8"

pitch of stays

8 1/2" x 9"

End plates, thickness

Diameter of longitudinal stays to end plates

2 3/8"

pitch of ditto

17" x 17"

How stays are secured

By double nuts & washers -

Diameter of tubes

3 1/2"

pitch of tubes

4 3/4" x 4 3/4"

Thickness of tube plates

5/8"

Stayed by

Screwed tubes -

pitch of stays

14 1/4" x 9 1/2"

Description of steam receiver

Vertical Steam chest

Diameter of ditto

3' 6"

length of ditto

5' 0"

Thickness of plating of ditto

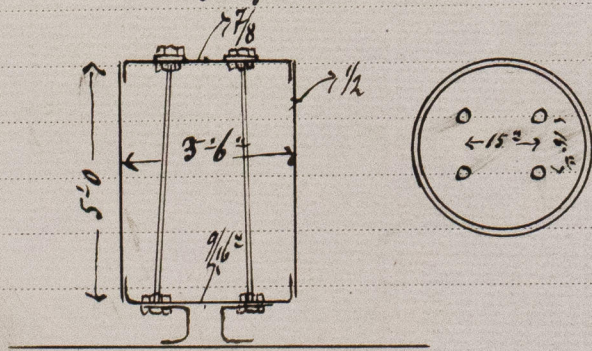
1/2"

ends

9 1/16" x 7 1/8"

Ends, how stayed

By four solid stays; dia 1 3/4"





19371 Iron.

Working pressure of Mainshell	70 lb p. sq. inch
" " Furnace flue	95 lb " " "
" " Mainstays	92 lb " " "
" " Combustion Chamber stays	90 lb " " "
" " flat plates	81 lb " " "

The Spring Safety valves Cair patent are set at 70 lb pressure and have been tested under steam on board in the usual way on the 27<sup>th</sup> of September in my presence.

The result was as follows:

4.45 :	70 lb	of steam	
4.47 :	71 1/2	"	valves blowing off
4.50 :	67	"	" " "
4.55 :	67	"	valves closing
4.57 :	71	"	valves blowing off
5.0 :	68	"	valves closing
5.3 :	71	"	valves blowing off
5.4 :	69	"	" closing
5.5 :	67	"	valves closing

Steam valve and feed valve closed. Firing continued as though Engines working at full speed.

AMK.



© 2019

Lloyd's Register  
Foundation