

16016 *Len*Steam Ship "Undomora."

Rev 6/3/76

Diameter of Boilers 10' 6".

Thickness of shell plates $\frac{3}{4}$ ".

Description of riveting. Longitudinal seams double. Circumf. single

Pitch of rivets " " $3\frac{3}{4}$ " " $2\frac{1}{2}$ "Lap of plating " " $5\frac{1}{4}$ " " $3\frac{3}{4}$ "Diam. of rivets " " $1\frac{1}{8}$ " " $1\frac{1}{8}$ "

Number of furnaces in each boiler 2.

Diameter of furnaces 2' 11".

Length of do " 7' 6".

Thickness of furnace plates $\frac{1}{2}$ ".

Joints of furnace plates, lapped, and single riveted.

Length of fire bars 5' 0".

Furnaces if strengthened with rings, none

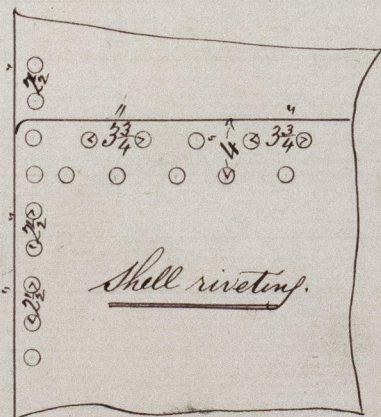
Back uptake plates $\frac{1}{2}$ " thick. screw stayed $7\frac{1}{2} \times 7\frac{1}{2} \times 1\frac{1}{2}$ dia = 3806 lbsEnd plates $\frac{5}{8}$ " thick, bolt stayed $14 \times 11 \times 2$ dia = 3440 "

Flat plates where screw stayed = 114 lbs working pressure, Ends = 65 lbs.

Tube plates stayed with solid stay $1\frac{1}{2}$ dia with nuts on each side of both tube plates.

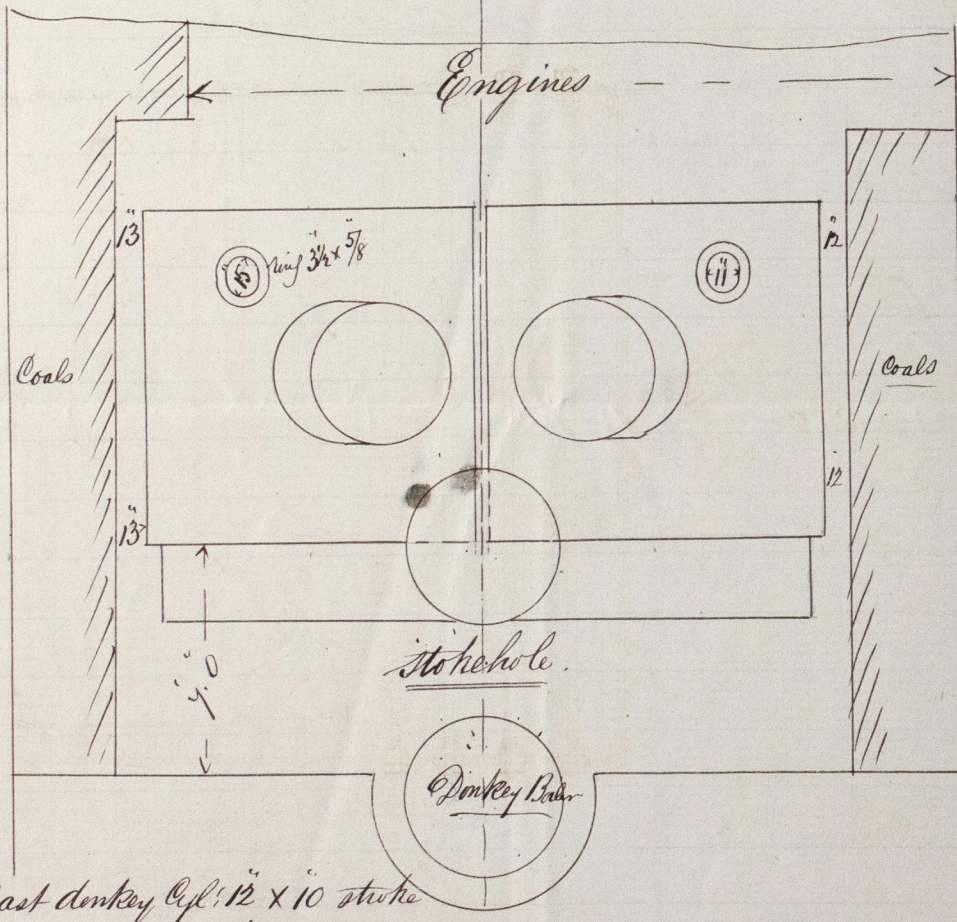
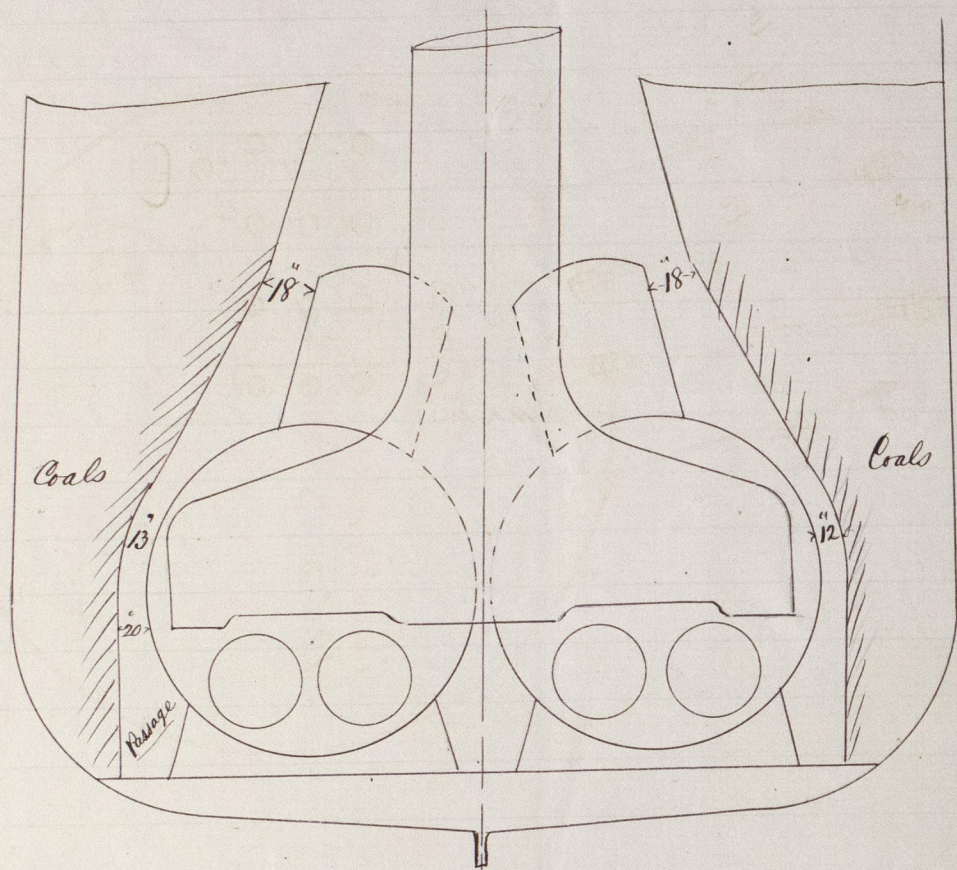
$$\text{Shell } \frac{51520 \times 1\frac{1}{2} \times 70}{124\frac{1}{2} \times 6.5} = 67 \text{ lbs working pressure.}$$

$$\text{Furnaces } = \frac{89600 \times \frac{1}{2}^2}{7\frac{1}{2} \times 35} = 84 \text{ " " "}$$



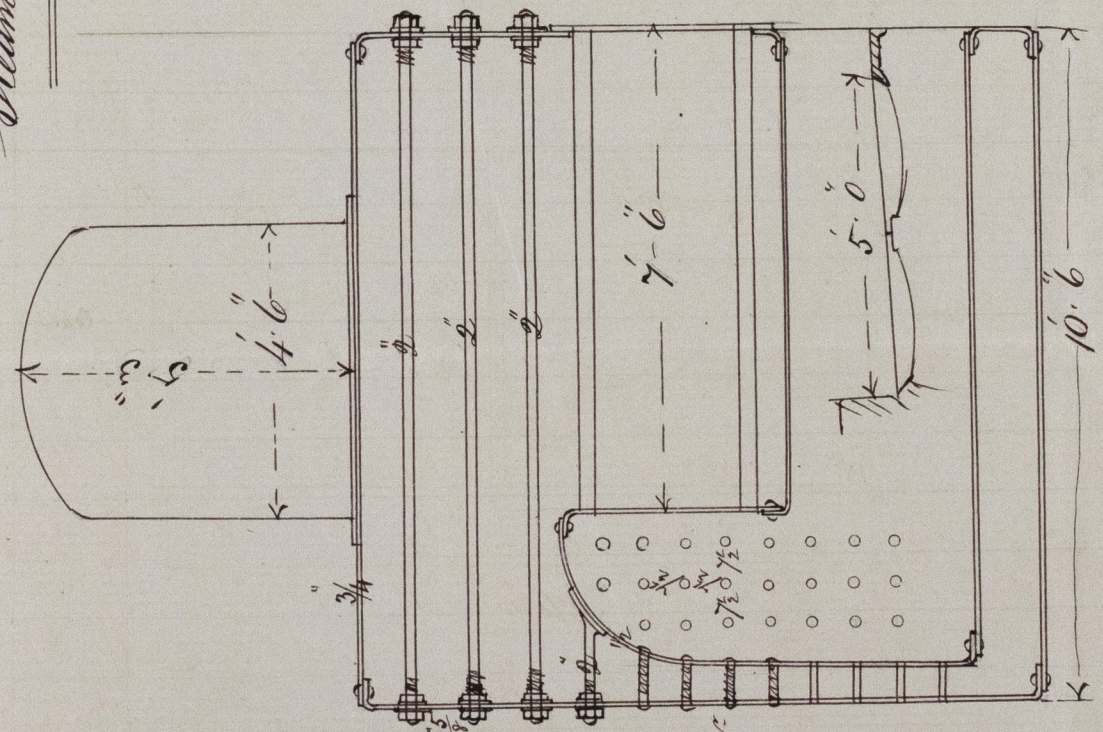
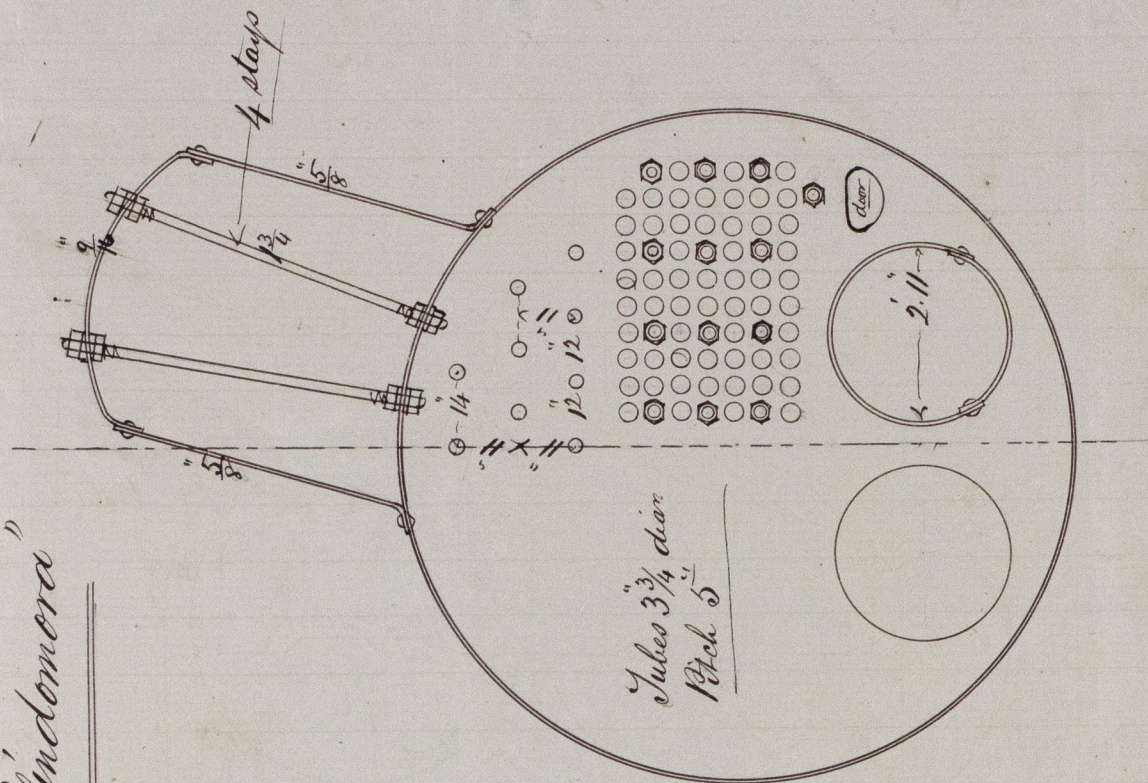
© 2019
William Allison,
Engineer Surveyor.
Feb 11th /76.

Register
Foundation



Water Ballast donkey Cyl: 12 x 10 stroke
double acting pump (about) 6 x 10 stroke.
draws from tanks & bilges.

Steam Ship "Vindomera"



Saved staves 1/4 dia
Pitch 8 x 7 1/2



2019

Lloyd's Register
Foundation

120W465-0330 (2/2)