

" 15753 Iron ~~15753~~

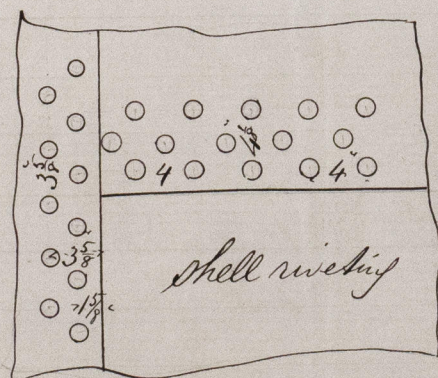
Steam Ship Monte Moro.

Rev 8/2/76

Diameter of Boilers 12' 6".
 Thickness of shell plates $\frac{7}{8}$ ".
 Description of riveting. Longitudinal seams tubb. Circumf double
 Pitch of rivets " " " 4 " " $3\frac{3}{8}$ "
 Lap of plating " " " $7\frac{1}{2}$ " " 5"
 Diameter of rivets " " " $1\frac{1}{8}$ " " $1\frac{1}{8}$ "
 Number of Furnaces in each Boiler 3.
 Length of Furnaces 8' 0".
 Diameter of do 2' 10".
 Thickness of do plates $\frac{1}{2}$ ".
 Joints of " plates. double butt strapped & single riveted,
 whether furnaces are strengthened with rings. none.
 Length of fire bars 5' 0".
 Back uptake plates $\frac{7}{8}$ " thick screw stayed $9 \times 9 \times 1\frac{1}{4}$ dia = 4315 lbs
 End plates $\frac{7}{8}$ " thick bolt stayed $15 \times 12 \times 2$ dia = 3726 lbs
 Flat plates where screw stayed = 60 lbs working pressure. Ends = 65.
 Tube plates stayed with stay bolts screwed into back tube
 plates and nuts in flame box. Nuts on each side of
 front tube plates.

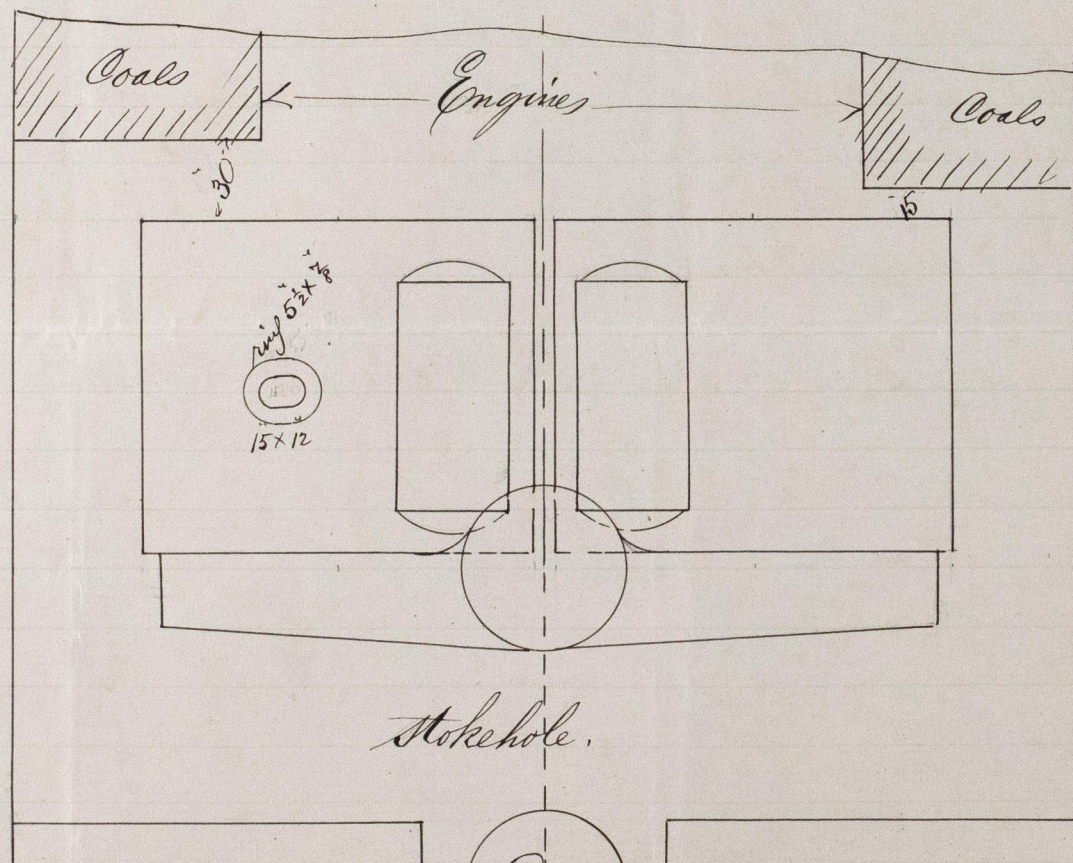
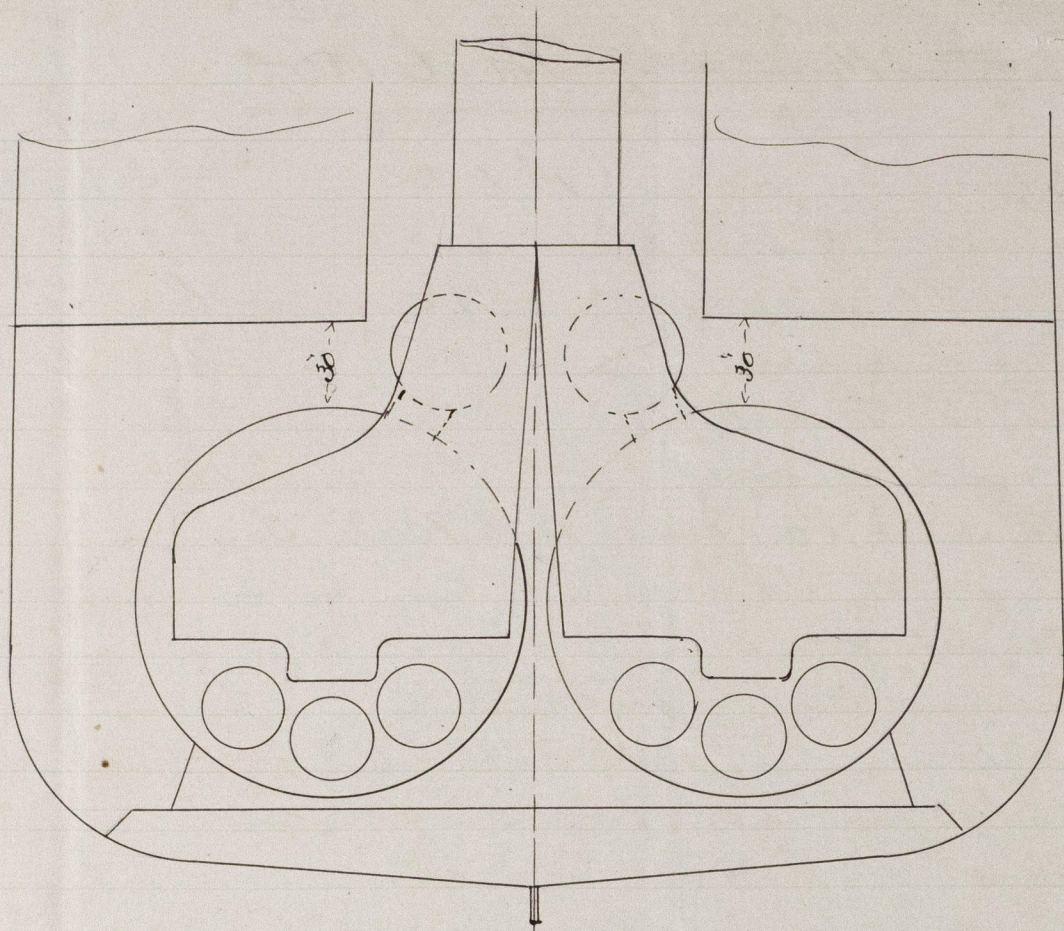
$$\text{Shell} = \frac{51520 \times 1\frac{3}{4} \times 73}{148\frac{1}{4} \times 6.5} = 68 \text{ lbs working pressure.}$$

$$\text{Furnaces} = \frac{89600 \times \frac{1}{2}^2}{8 \times 34} = 82 \text{ " " " "}$$



William Allison,
 Engineer Surveyor

Jan'y 22 / 76.



Water Ballast Pump, Cyl. 12 x 12 stroke
Double Acting pump. 8 x 12 "
draws from Sea Tanks & Bilges,



Boilers covered with feet & lagging
these dimensions to shell of Boilers



© 2019

Lloyd's Register
Foundation