

S. S. Hespach

14984 In.

Particulars of Boilers

No. of Boilers 2. 10 ft. dia. 9 ft 6" long.

Shell riveting, double, longitudinally and in Circumference.

No rings in furnaces. Single riveted. Lap 2 1/2". Pitch 2" - Rivets 1 3/16"

Manholes 14 1/2" x 11 1/2". Loss of Strength Compensated by rings

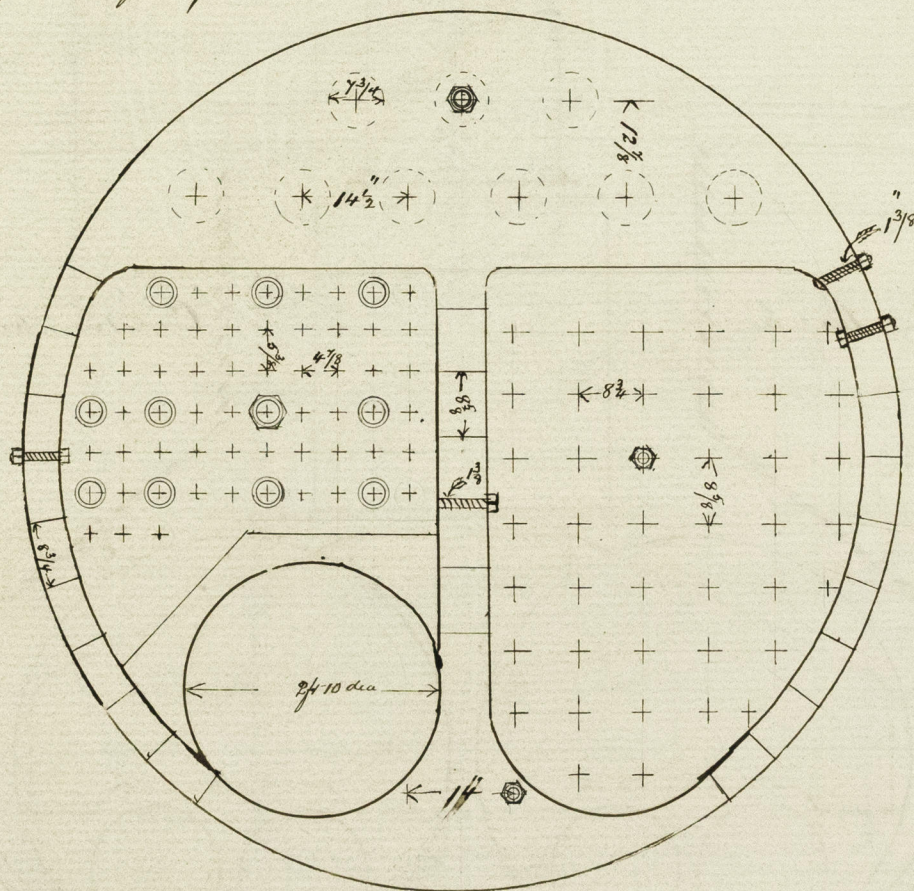
Shell plating, Tube plates, and plating in flat ends of Boilers 3/4" thick

Plating of furnaces, Combustion Chamber and Superheater 1/2" thick

Vertical seams in Superheater double riveted. Circumferential seam

single riveted. Rivets 1 3/16" Vertical lap 4 1/2" pitch 2 1/4". Circumferential lap 2 1/2" Pitch 2"

Wid. of Stays given to top of thread



Grate Surface in one Boiler — 31.12 sq ft

Heating Surface in one Boiler — 2 furnaces 64.12 sq ft

2 Back tube plates 24.71 "

Combustion Chambers 4.50 "

120 Tubes 169.20 "

Total 932.63 "

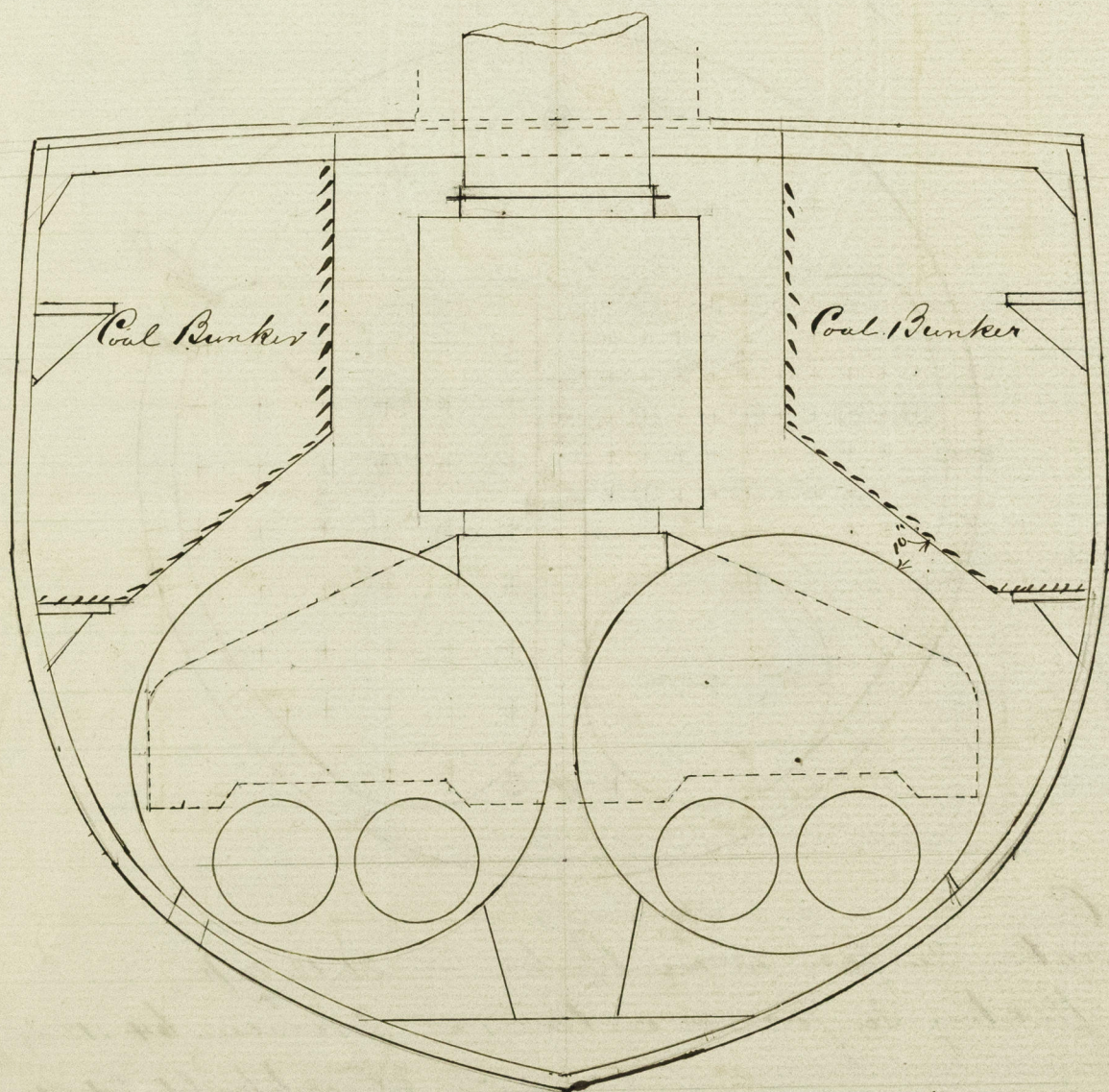
Amos B. Am

IRON 462-0457

3/9/15

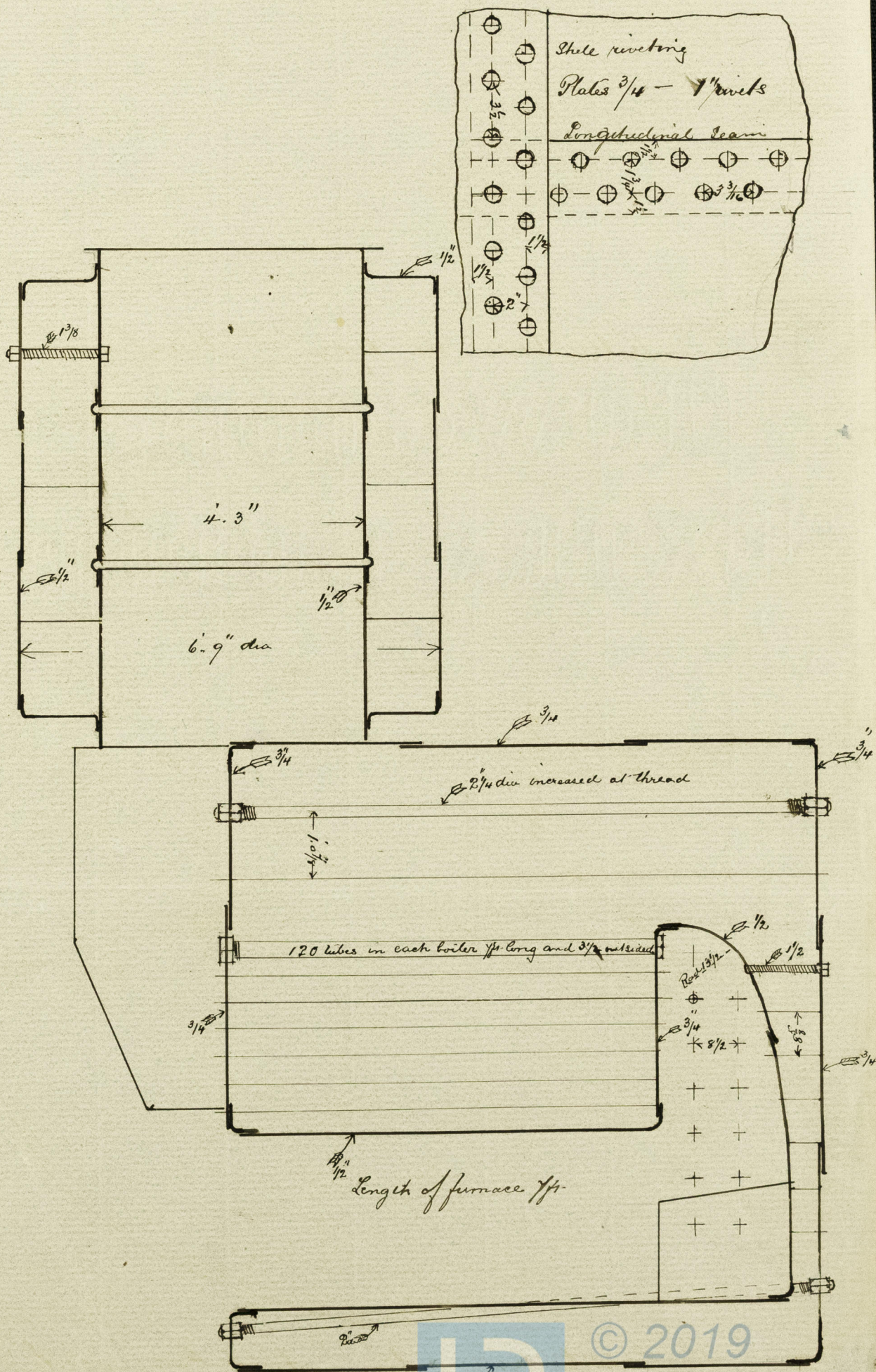
14984 Rev

Bunkers in way of Boilers



Boilers Covered with patent Composition
Nearest distance to Bunkers 10 inches

14984 Iron



James R. Rami

© 2019

Lloyd's Register
Foundation