

TELEGRAPHIC ADDRESS.  
"BEARDMORE GLASGOW"

TELEPHONE NO. 1356.

LONDON OFFICE,  
11 QUEEN VICTORIA ST. E.C.  
NEWCASTLE OFFICE,  
50 SIDE.

Parkhead Forge, Rolling Mills,  
and Steel Works,  
Glasgow. 11<sup>th</sup> May 1894

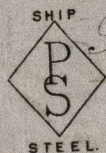
Messrs Charles S. & Co Ltd

June 16/5/94

Bought of William Beardmore & Co

Manufacturers of Steel Plates Bars & Rivets (Siemens Process) & Iron Plates Bars &

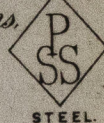
SHIP



Rivets for Ships, Boilers, &c. & Marine Engine Forgings of all descriptions.

Iron & Steel Plates flanged for Boiler Fronts &c.

BOILER



Steel Stay Bars

390	8	156/159	1 1/2 NB	x 18.0	7312
	1	160	1 3/4 "	"	118
	10	242/244	2 1/2 "	x 9.10	15-8
					141-

19 Du NB Truch. 2006 1  
to Dry dock Strn Hull  
9 Bar - 0.9 0.20 2/3  
10 " - 15.0.8 3/16

to Dry dock  
17/4/94

HVL409-0161



Lloyd's Register  
Foundation