

TELEGRAPHIC ADDRESS.  
"BEARDMORE, GLASGOW"

TELEPHONE NO 1355.

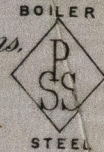
LONDON OFFICE,  
11 QUEEN VICTORIA ST. E.C.  
NEWCASTLE OFFICE,  
50 SIDE.

Parkhead Forge, Rolling Mills,  
and Steel Works,  
Glasgow. 15<sup>th</sup> May 1894

Messrs Charles Shipley & Co. Ltd. New 21/5/94

Bought of William Beardmore & Co.

Manufacturers of Steel Plates Bars & Rivets (Siemens Process) & Iron Plates Bars &  
Rivets for Ships, Boilers, &c. & Marine Engine Forgings of all descriptions.  
Iron & Steel Plates flanged for Boiler Fronts &c.



289	1	55307	6.0 x 30 x 27 x 9/16
J	1	248	5.54 x 6 x 23/32
100	1	190	40 x 27 x 9/16
3		CR 39194	34996 6

Hull  
2 3/8 173 0 38 3  
1 - 13 12 37

3-
143.
13 12.
192 12

Surveyor's  
18/5/94  
1052's  
1052's

HVL 409-0158



Lloyd's Register  
Foundation