



STEEL BOILER No 389-90

WORKING PRESSURE = 160 LBS.

SCALE 1 INCH = 1 FOOT.

Blackburn Hull Report No. 9195
Swift

9195
9209

NOTE!

ALL PLATES STAYS AND RIVETS TO BE OF SIEMENS MARTIN STEEL. ALL RIVET HOLES TO BE DRILLED IN LONGITUDINAL SEAMS. ALL OTHERS TO BE PUNCHED OR DRILLED AS MAY BE CONVENIENT. THE DRILLING WILL BE DONE IN PLACE AFTER BENDING, AND ALL PUNCHED OR FLANGED PLATES TO BE ANNIELED AFTERWARDS. IF ANY HOLES ARE PUNCHED AFTER THE PLATES ARE ANNIELED THEY ARE TO BE REAMED OUT SO AS TO REMOVE AT LEAST 1/8" ALL AROUND MEASURING FROM THE LARGEST PART OF THE PUNCHED HOLE. THE SCREW STAYS ARE 1 1/2" & 1 3/4" EFFECTIVE DIAM. SCREWED INTO BOTH PLATES AND NUTTED AT EACH END. THE TUBES ARE IRON. THE STAY TUBES ARE 2 1/2" INTERNAL DIAM & 3/16" THICK EFFECTIVE. THE ORDINARY TUBES ARE 3 1/4" EXT DIAM AND 1/8" L.S.G. THICK. A MANHOLE IN SHELL 16" X 12" WITH SHORTER AXIS LONGITUDINALLY AND A DOUBLING PLATE 2'-6" X 2'-4" X 3/32" THICK FITTED AROUND IT. ALL STAYS OF STEEL EXCEPT THOSE JOINTED WHICH ARE OF IRON. ALL STEEL PLATES & STAY BARS ARE MADE BY W. BEADMORE & CO.

DOUBLING PLATE AROUND MANHOLE.

2 1/32" THICK



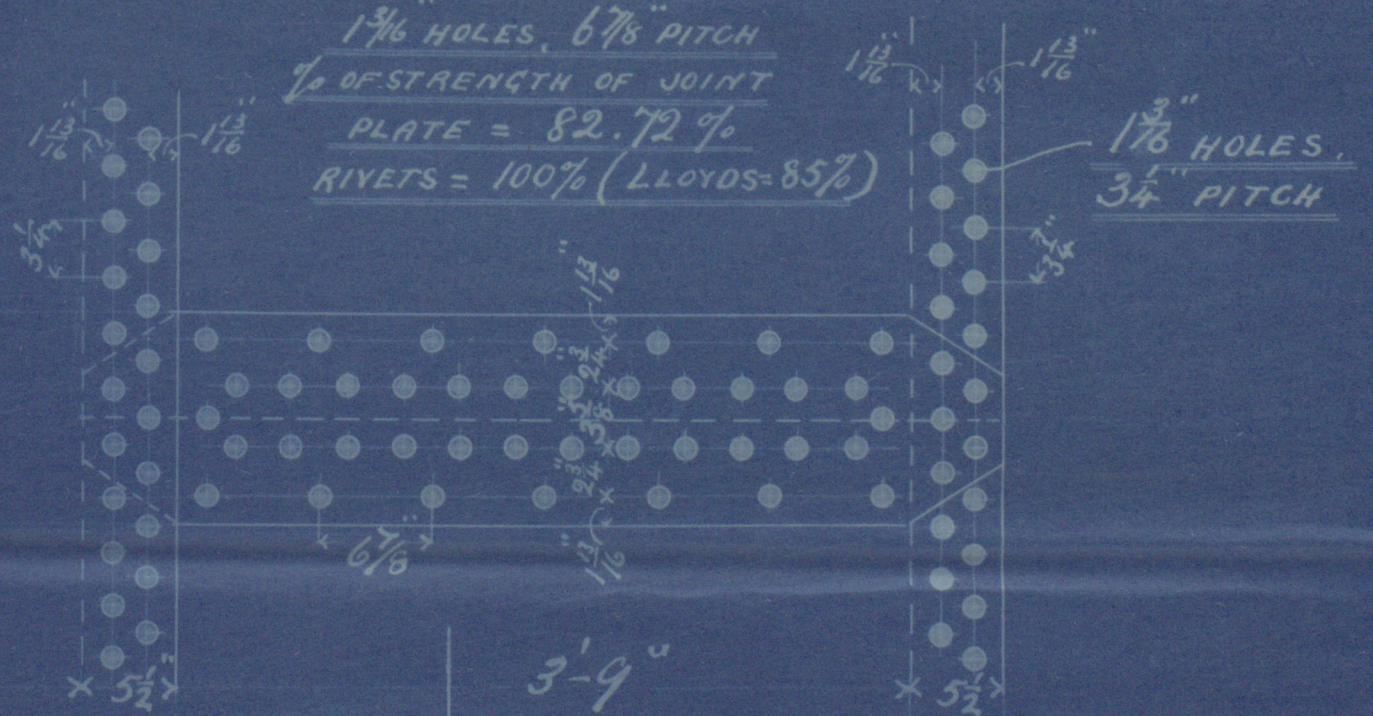
1 1/8" RIVET HOLES
INNER ROW COUNTERSUNK
AND FLUSH RIVETED.

EARLES SHIPBUILDING
ENGINEERING COMPANY
LIMITED
HULL

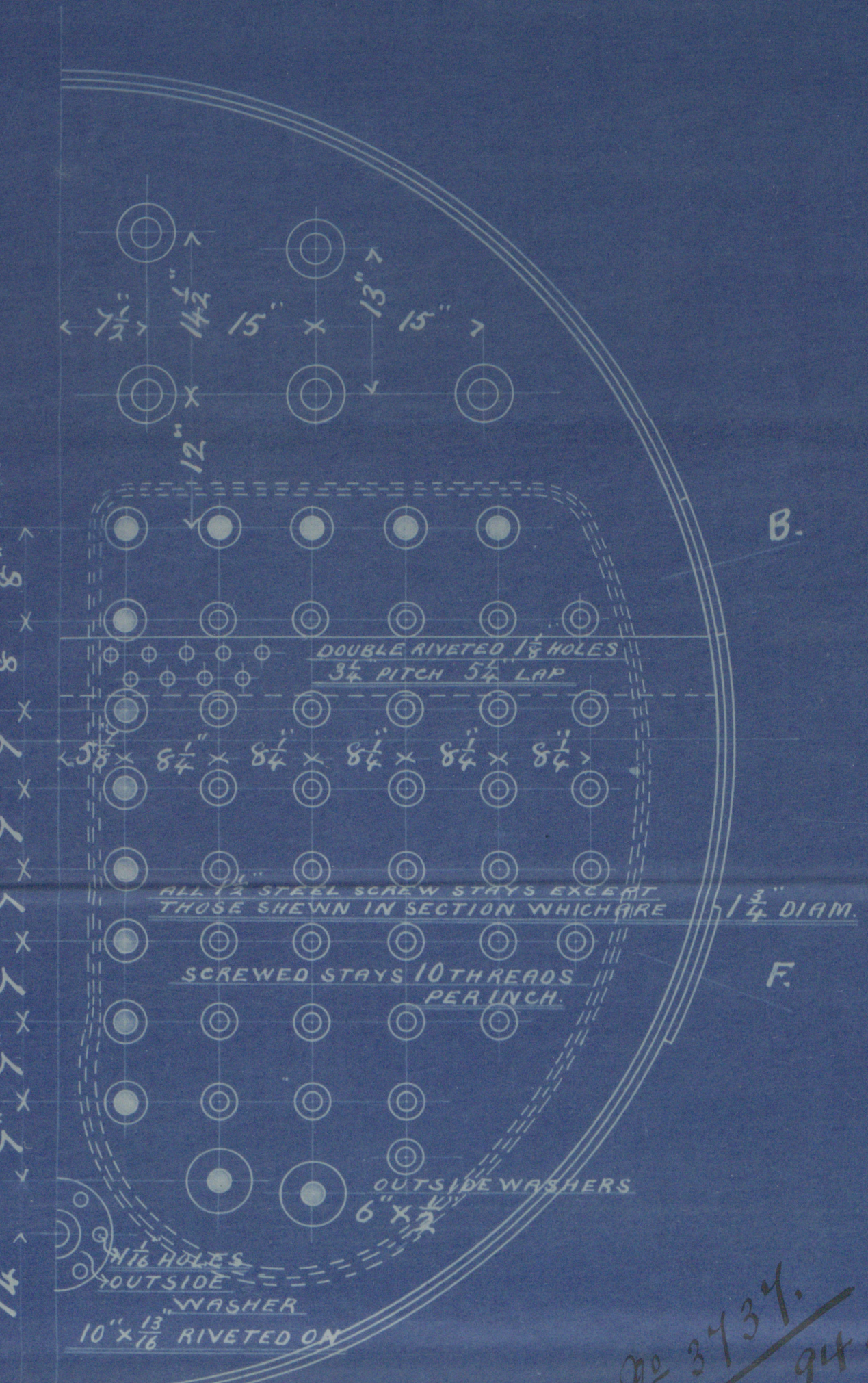
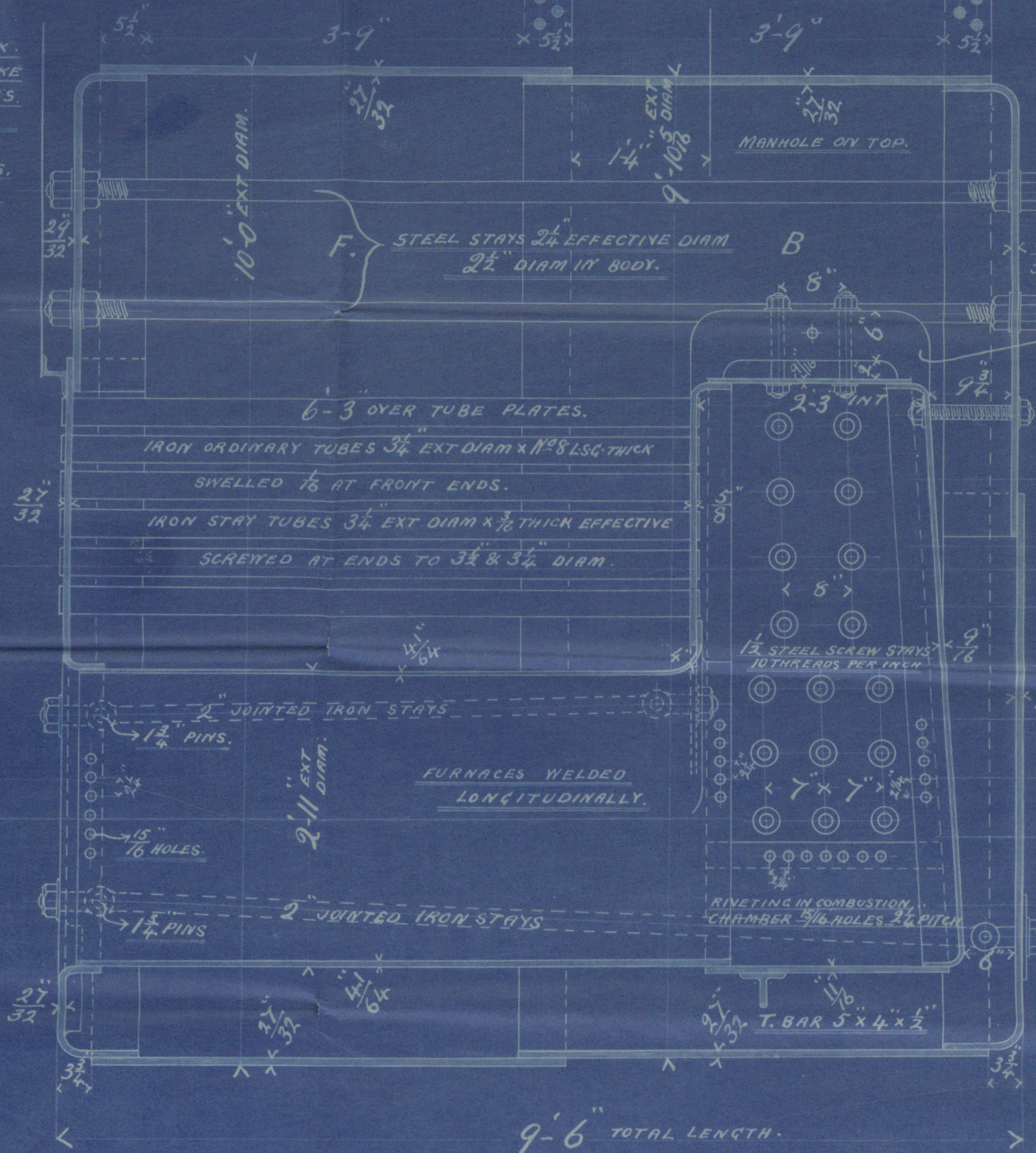
2-5-94

PLAN OF SHELL RIVETING.

1 1/8" HOLES, 6 7/8" PITCH
1/2" OF STRENGTH OF JOINT
PLATE = 82.72%
RIVETS = 100% (LLOYD'S 85%)



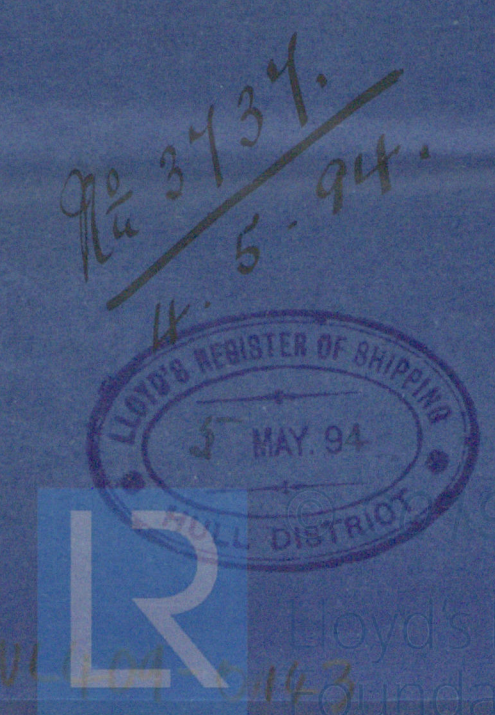
SHELL 2 1/32" THICK
BUTT STRAPS 12 1/4" X 3/4" THICK.
SHELL PLATES IN F STRAKE
TOP PLATE 53 PITCHES.
BOTTOM " 61 "
IN B. STRAKE.
TOP PLATE 57 PITCHES.
BOTTOM " 57 "



DIMENSIONS

LENGTH OF FIRE BARS	5-0
AREA OF FIRE GRATE	28 sq. ft.
DIAM OF TUBES OUTSIDE	3 1/4"
LENGTH OF TUBES OVER PLATES	6'-3"
NO OF TUBES	118
AREA THROUGH TUBES	6 sq. ft.
SURFACE OF TUBES	616 "
TOTAL HEATING SURFACE	800 "
WORKING PRESSURE	160 LBS
DIAM OF SAFETY VALVE EACH	2"

No 389-90





HVL409-0143

s/s Blackbird
Hull Report No 9195

s/s Swift
Hull Report No: 9209



© 2019

Lloyd's Register
Foundation