

Lloyds Surveyors
Hull.

HULL 409-0137 (1/2)

9' 9" inside
9' 0" mean

98

6' 0" between plates

5 1/2" AREA THRU TUBES

HEATING SURFACE IN TUBES 539 sq ft

TOTAL HEATING SURFACE 706 sq ft

FIRE BAR SURFACE 4' 6" bars 25 sq ft

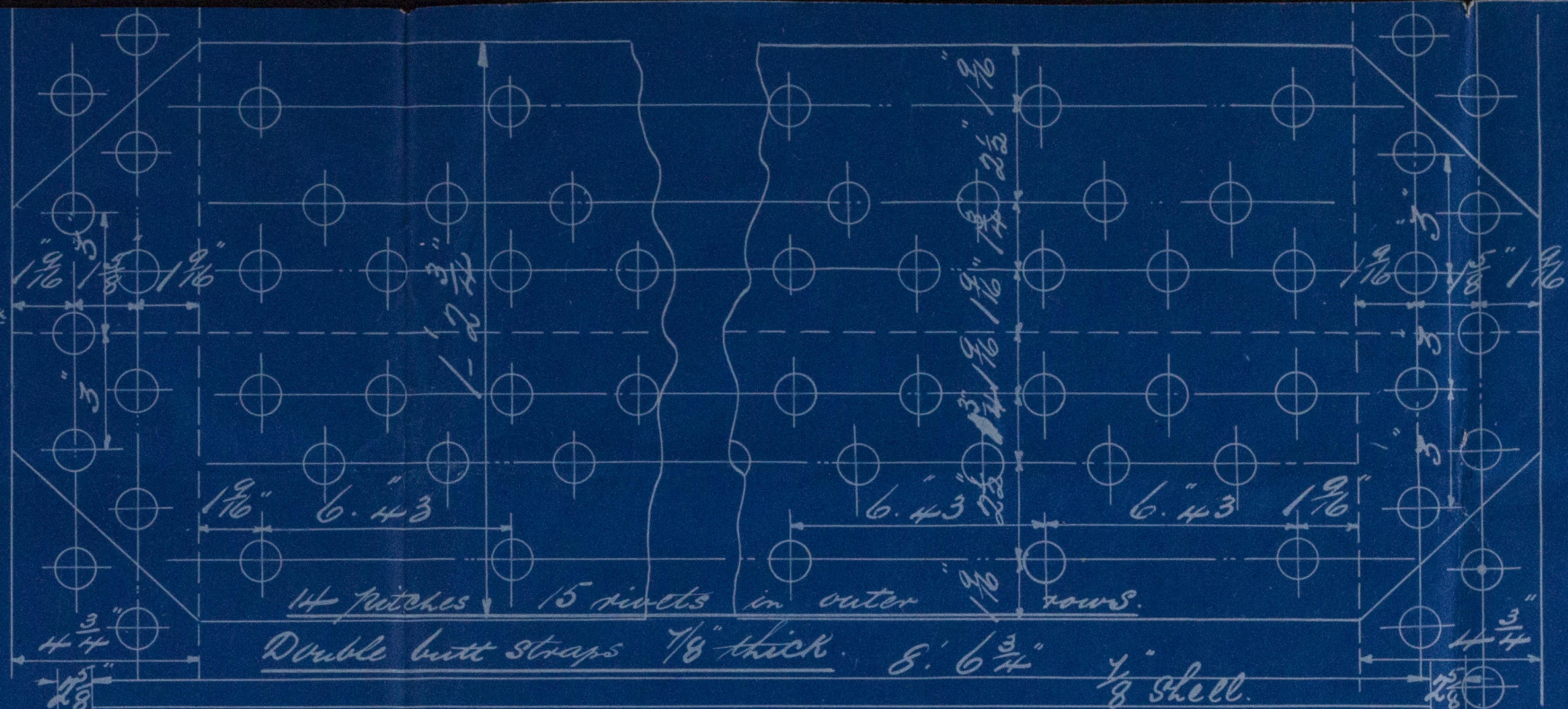
DIA. OF SAFETY VALVES 2"

CUBIC FEET OF STEAM SPACE 6" above c.c. 129 cu. feet

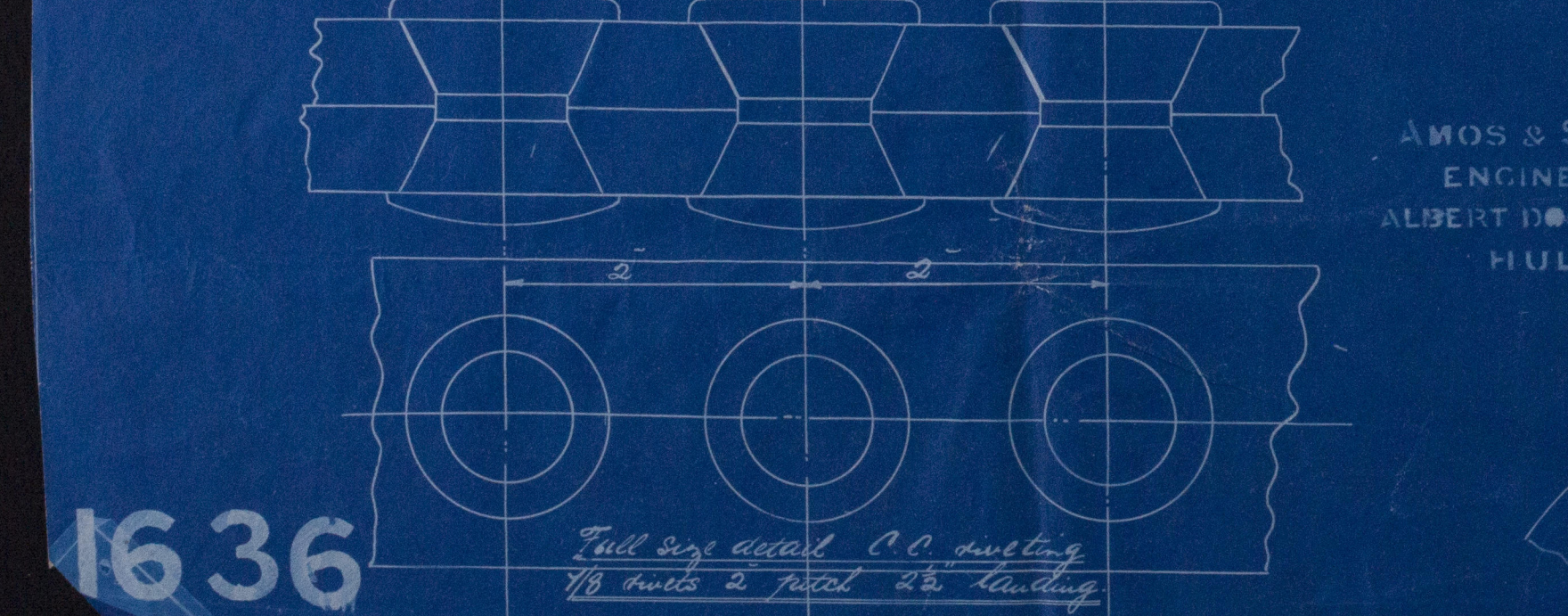
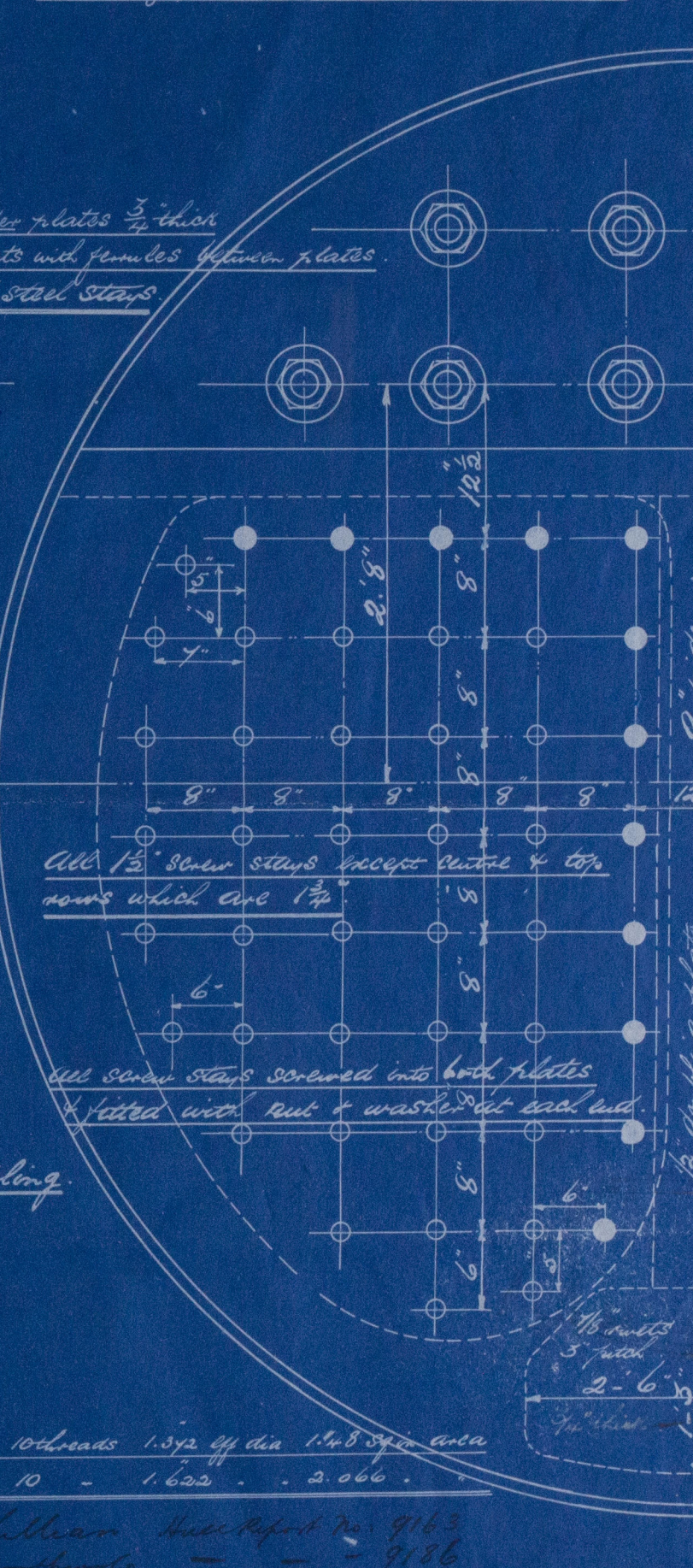
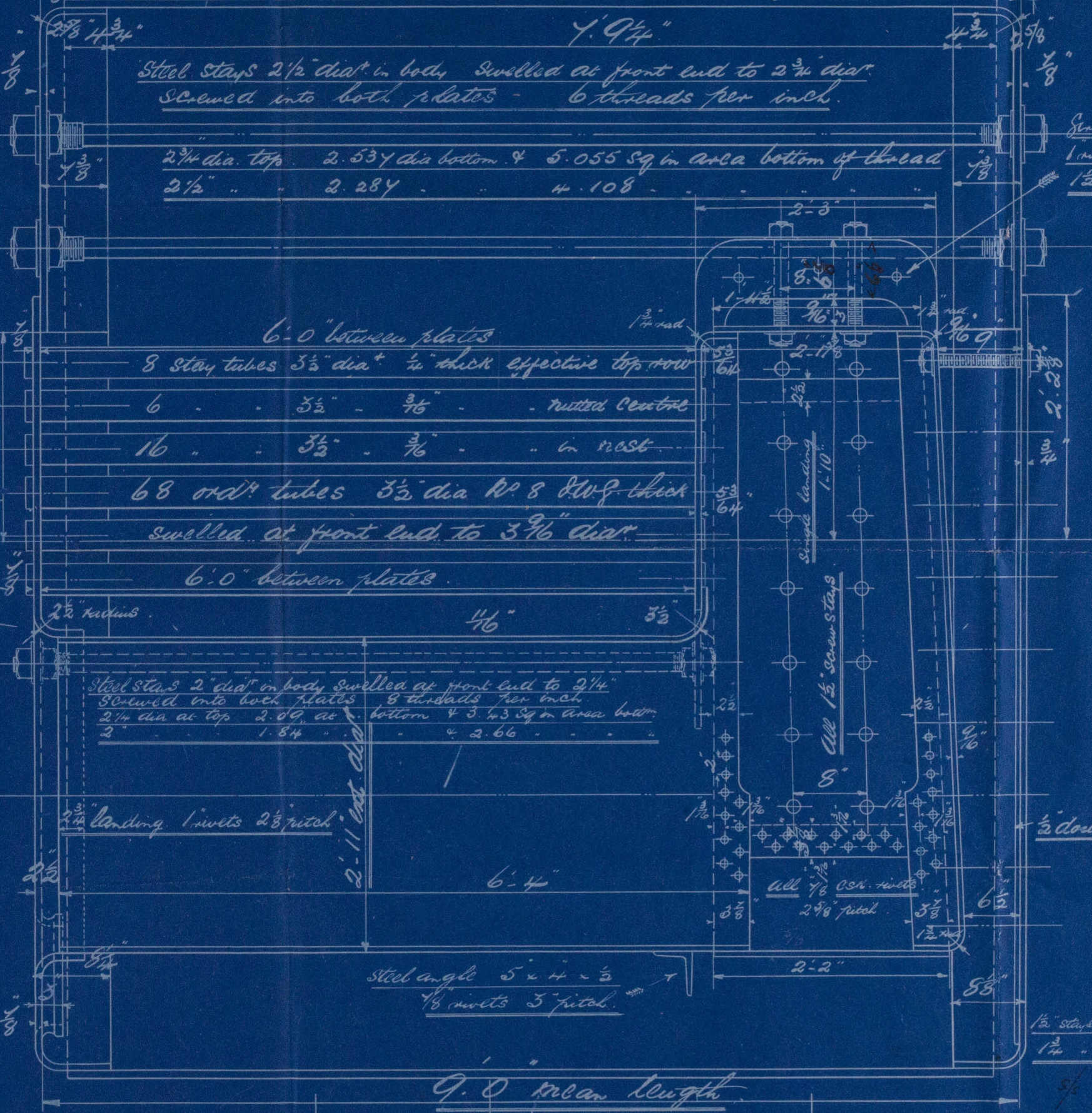
WORKING PRESSURE LLOYDS 170 lbs sq in.

Circumferential Seams
1 rivets 1 1/2" holes 3" pitch
% plate 65.6
% rivet 54.

Longitudinal Seams
1 rivets 1 1/2" holes 6" pitch
% plate 83.9
% rivet 114.



Notes
The plates rivets & seams of Steel by the
Schenck Martin process.
All rivet holes drilled throughout the
boiler those in shell after bending.
The shell in two plates circumferentially.
All flange plates to be annealed after
bending. Steel stays not to be
welded. Tubes of iron.
A manhole 16 x 12" to be fitted in
shell with shorter axis longitudinally.
Doubling plate 2' 6" x 3' 2" x 7/8"



AMOS & SMITH,
ENGINEERS
ALBERT DOCK WORKS
HULL.

Full size section showing method of fitting butt straps

End plate

Outside butt

Shell

Inside butt

2 STEEL BOILERS
R.100

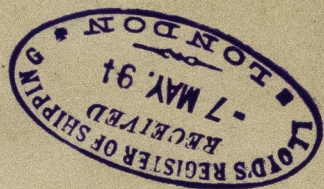
TITLE Steel boiler
FOR WHOM Mr. Maud.
DATE Nov. 2nd 1894
ORDER 7100
IF MADE
SCALE 1" = 1 foot.

1636

HULL 409-0137 (1/2)

s/s Lillian Hunt Report No: 9163
s/s Northwold - - - 9186

HVL409-0137



© 2019

Lloyd's Register
Foundation