

TELEGRAPHIC ADDRESS,
"BEARDMORE, GLASGOW"

TELEPHONE NO 1356.

LONDON OFFICE,
11 QUEEN VICTORIA ST. E.C.
NEWCASTLE OFFICE,
2 SAINT NICHOLAS BUILDINGS.

Parkhead Forge, Rolling Mills
and Steel Works.

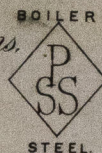
William Beardmore & Co
Glasgow 14 May 1894

Messrs Wm & Smith

Hull 22/5/94

Bought of William Beardmore & Co

Manufacturers of Steel Plates Bars & Rivets (Siemens Process) & Iron Plates Bars &
Rivets for Ships, Boilers & Marine Engine Forgings of all descriptions.
Iron & Steel Plates flanged for Boiler Fronts &c.



10	1	SS	6.5 1/2	54	9/16	6-20
12	8	655	4 6	26	"	16 3/16
9	4	464	9 1	86	11/16	39-4
13	2	661 1/2	4 8	76 1/2	5/8	5-4
14	2	673	5 4	9	1/2	12 1/16
8	4	449	4 6	48	53/64	1 2
16	14	753	2 3	12	3/4	82
		830 853				

35 Pen N B to Hull

Rea. City Union Bank & Co
East Coast.

Wm & Smith
Hull

15	SS	10 2 8	2/40
20		5 18 2 24	1/39

HUL409-0130



© 2019

Lloyd's Register
Foundation