

TELEGRAPHIC ADDRESS.
"BEARDMORE.GLASGOW"

TELEPHONE NO 1356.

LONDON OFFICE,
11 QUEEN VICTORIA ST. E.C.
NEWCASTLE OFFICE,
2 SAINT NICHOLAS BUILDINGS.

Shelton Humber 9163
Tottenham - 9186

Parkhead Forge, Rolling Mills,
and Steel Works,
Glasgow.

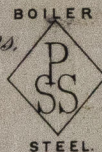
1894

James Wms Smith

Wm 2/5 194

Bought of William Beardmore & Co

Manufacturers of Steel Plates Bars & Rivets (Siemens Process) & Iron Plates Bars &
Rivets for Ships Boilers, &c & Marine Engine Forgings of all descriptions.
Iron & Steel Plates flanged for Boiler Fronts &c.



<i>100</i>	<i>4</i>	<i>2</i>	<i>55 590</i>	<i>2.6</i>	<i>76</i>	<i>7/8</i>	<i>33</i>
<i>3</i>	<i>1</i>	<i>-</i>	<i>-</i>	<i>8.1 1/4</i>	<i>15 1/4</i>	<i>-</i>	<i>31 16.</i>
<i>11</i>	<i>4</i>	<i>591</i>	<i>-</i>	<i>4.9</i>	<i>7 1/2</i>	<i>9/16</i>	<i>8.20</i>
<i>16</i>	<i>25</i>	<i>606</i>	<i>-</i>	<i>2.3</i>	<i>17</i>	<i>3/4</i>	<i>16 1/2</i>
<i>2</i>	<i>3</i>	<i>729</i>	<i>-</i>	<i>8.7 3/4</i>	<i>15 1/4</i>	<i>7/8</i>	<i>11 1</i>
<i>10</i>	<i>3</i>	<i>572</i>	<i>-</i>	<i>6 5/8</i>	<i>5 1/4</i>	<i>9/16</i>	<i>18 3</i>
	<i>3</i>	<i>700</i>	<i>-</i>				<i>312 20</i>
	<i>38</i>						

Per 100 Trucks 3919 1/2
3896 to shell

39

Surveyed by
18/5/194



© 2019

Lloyd's Register
Foundation

HVL409-0129