

TELEGRAPHIC ADDRESS.
"BEARDMORE GLASGOW"

TELEPHONE NO 1356.

LONDON OFFICE,
11 QUEEN VICTORIA ST. E.C.
NEWCASTLE OFFICE,
50 SIDE.

3/6 Lillies Hul R.M.W. 9163
Port Works — — 9183

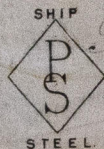
Parkhead Forge, Rolling Mills
and Steel Works.

Glasgow: 12th Jan. 1894

Messrs Amos & Smith

Bought of William Beardmore & Co.

Manufacturers of Steel Plates Bars & Rivets (Siemens Process) & Iron Plates Bars &
Rivets for Ships, Boilers &c. & Marine Engine Forgings of all descriptions.
Iron & Steel Plates flanged for Boiler Fronts &c.



(2) Steel Stay Bars

R 100.	20 2 3/32	2 1/2 HS x 9. 10 1/2	1	10 - -
	4 3 2	2" . . 6. 11		3 1 -
	4 3 4	1 3/4 . . 3 1/2 fms		4 3 -
	10 2 3/32	1 1/2 . . 180 .		10 3 -
	2 1/32	. . . 30 .		1 3 20
	10 4 1/4	. . . 150 .		8 - 11
	52	Per 100 tons 41 88 to hull.	4	2. 12. 224
			44.	

HUL 409-0128

Subscribed to Lloyd's Register.
© 2019 Lloyd's Register Foundation