

TELEGRAPHIC ADDRESS,
"BEARDMORE GLASGOW"

TELEPHONE NO 1356.

LONDON OFFICE,
11 QUEEN VICTORIA ST. E.C.
NEWCASTLE OFFICE,
50 SIDE.

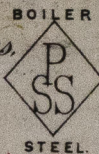
Parkhead Forge, Rolling Mills,
and Steel Works.

Glasgow. 17th May 1894

Messrs Wm & L Smith

Recd
23/5/94

Bought of William Beardmore & Co
Manufacturers of Steel Plates Bars & Rivets (Simons Process) & Iron Plates Bars &
Rivets for Ships, Boilers &c. & Marine Engine Forgings of all descriptions.
Iron & Steel Plates flanged for Boiler Fronts &c.



| | | | | | | | | | |
|-----|---|---|-----|---------|---|--------|---|-----|--|
| 100 | 3 | 3 | 894 | 8.14 | x | 15 1/4 | x | 7/8 | |
| | | | 895 | | | | | | |
| 2 | 1 | | | 8.7 3/4 | x | | | | |
| 13 | 2 | | 673 | 4.8 | x | 7 1/2 | | | |

101 1/2

32 70

5-14

19-8

CR 1772 to Hull

| | | | | | |
|---|----|----|----|----|----|
| 2 | 35 | 50 | 4 | 39 | 3 |
| | | 14 | 04 | | 41 |

HVC409-0126

Alfred Dock
Surveyor to Lloyd's Register
21/5/94



Lloyd's Register
Foundation