

Boiler plan

s/s Rio

Hull Report. No: 9093

HVL409-0039



© 2019

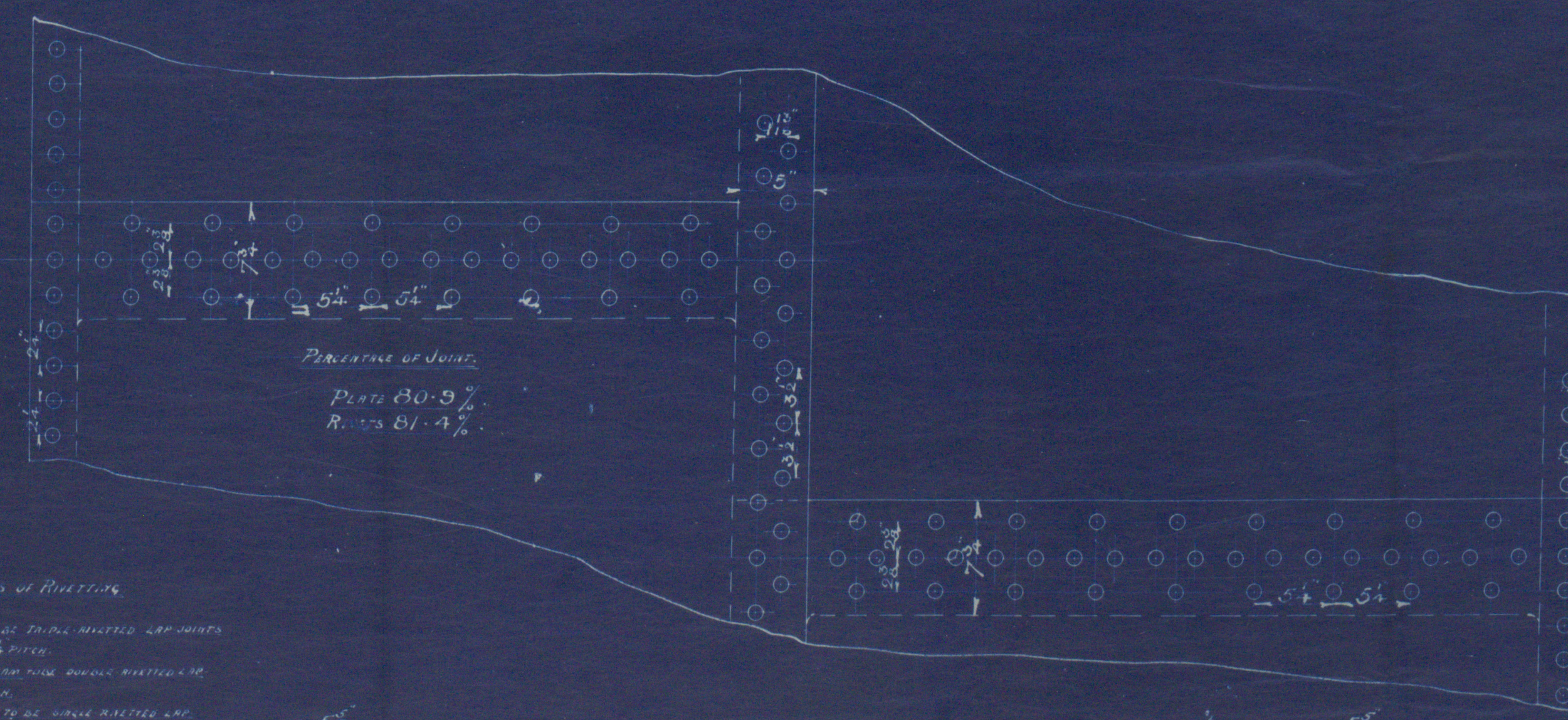
Lloyd's Register
Foundation

104 of 2 copies of

Handwritten: R/R 419 414

DIMENSIONS.

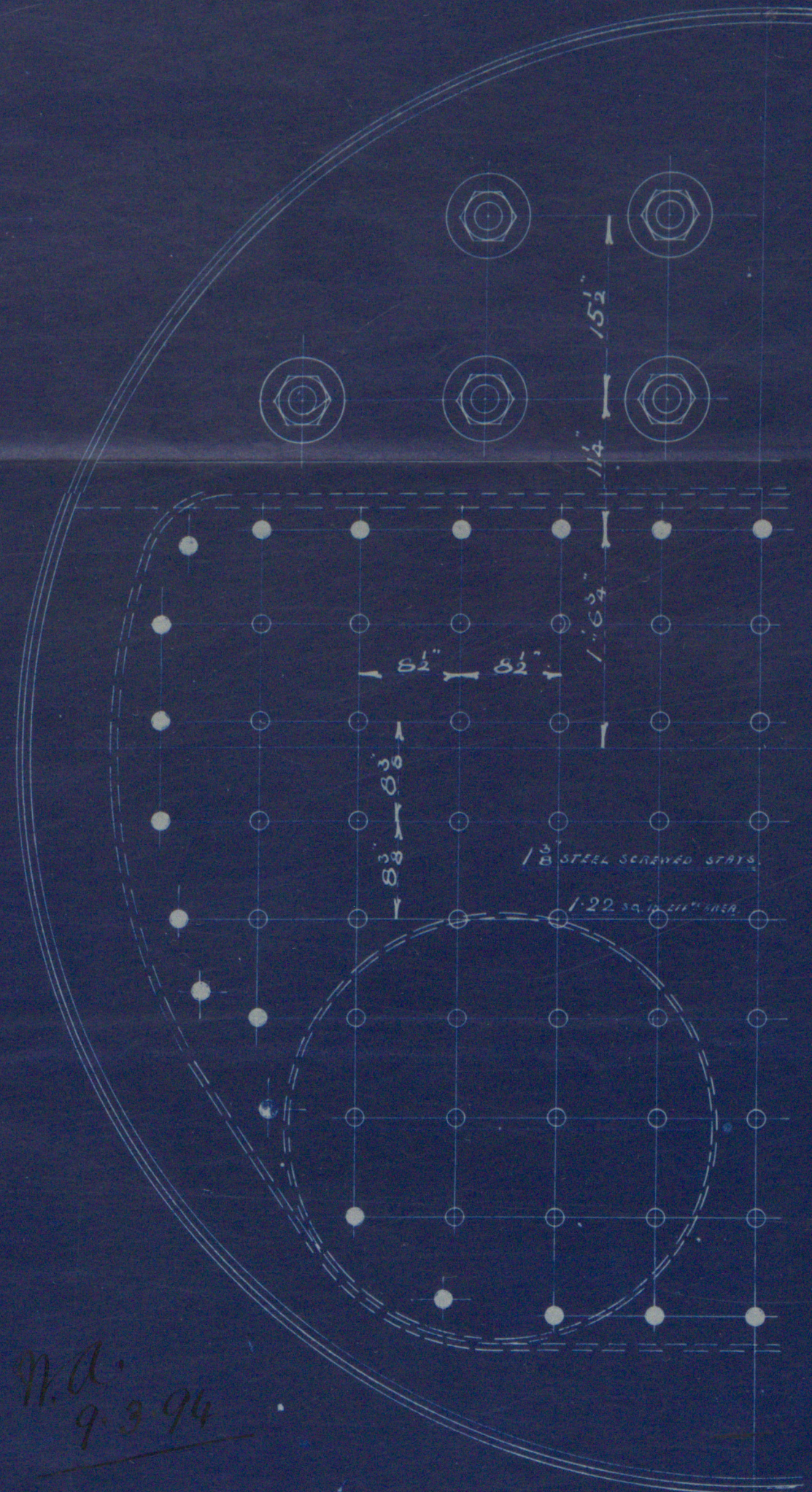
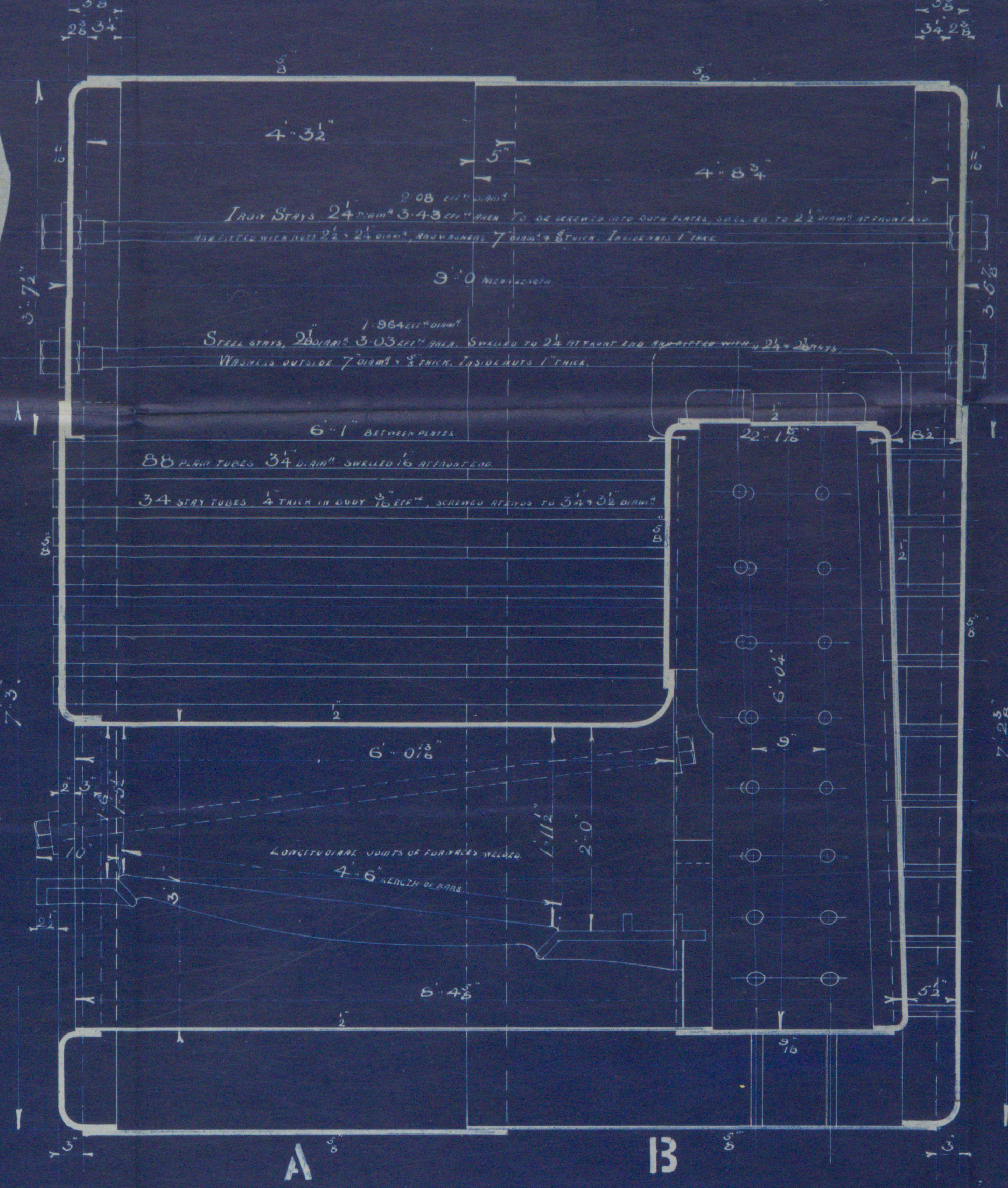
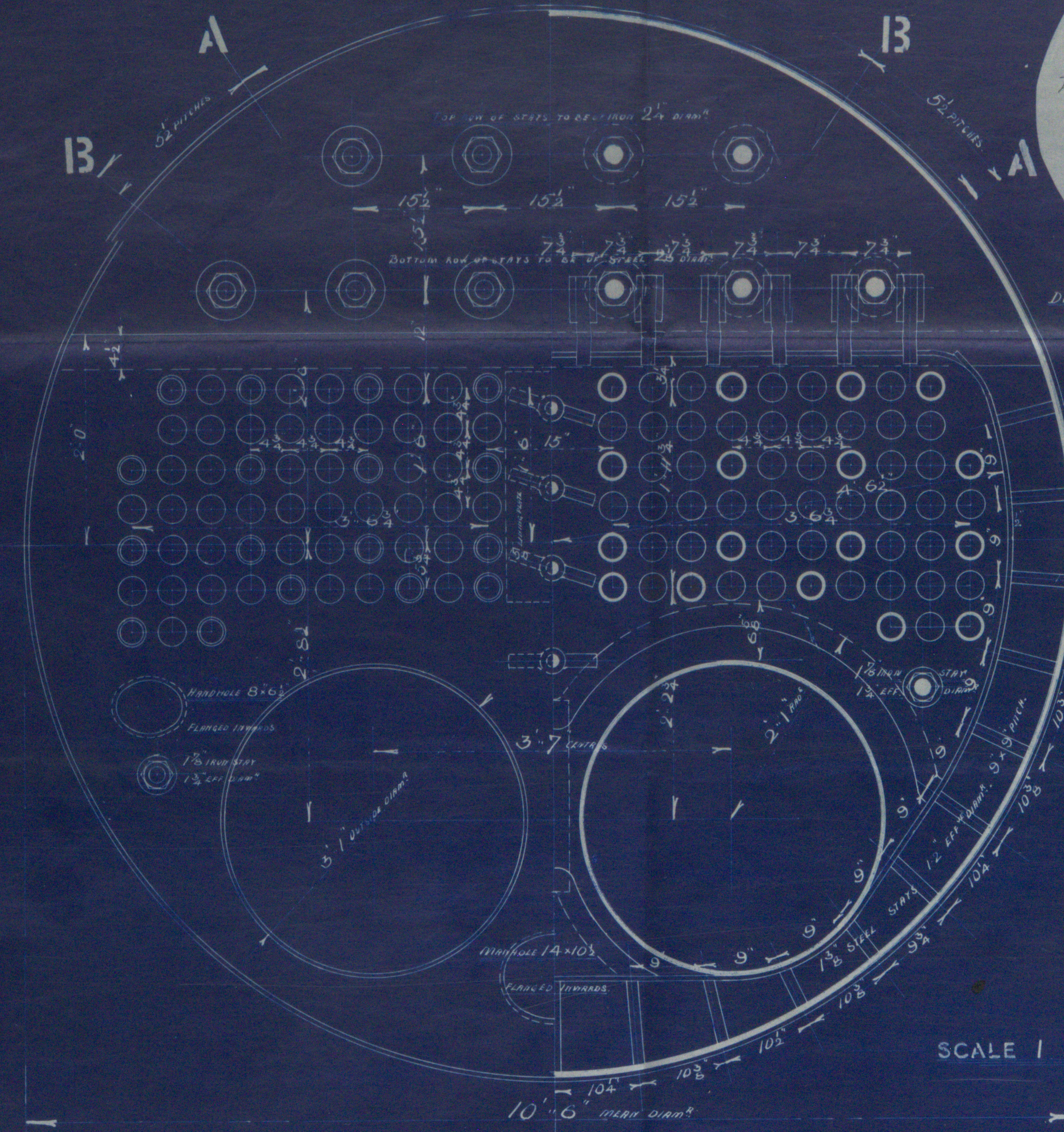
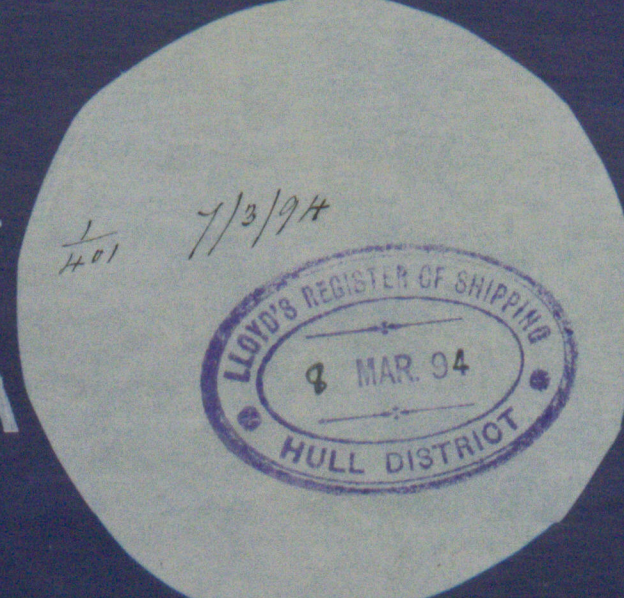
LENGTH OF FIRE BARS 4'-6"
 AREA OF FIRE GRATE 27 sq ft
 DIAM. OF TUBES OUTSIDE 3 1/2"
 LENGTH OF TUBES BETWEEN PIPES 6'-1"
 NO OF TUBES 122
 SURFACE OF TUBES 623 sq ft
 TOTAL HEATING SURFACE 780 sq ft
 WORKING PRESSURE 90 lbs.
 DIAM. OF SAFETY VALVE



PARTICULARS OF MATERIALS.

Longitudinal seams to be triple riveted lap joints
 Holes drilled 1/8" over
 Middle longitudinal seam to be double riveted lap joints
 Holes drilled 3/16" over
 End longitudinal seams to be single riveted lap joints
 Holes drilled 1/8" over

Handwritten: 1/4" shell, 1/2" 1/2" and 1/2" 1/2" and 1/2" 1/2"



SCALE 1 INCH TO A FOOT

STEEL BOILER 401

CHARLES D. HOLMES & CO.
 ENGINEERS & BOILER MAKERS
 HULL