

TELEGRAPHIC ADDRESS,  
"BEARDMORE, GLASGOW"

TELEPHONE NO 1356.

LONDON OFFICE,  
11 QUEEN VICTORIA ST. E.C.

NEWCASTLE OFFICE,  
2 SAINT NICHOLAS BUILDINGS.

*S/S Cuckoo*

*Inv Rep Mar 9059*

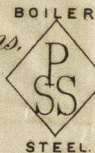
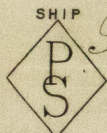
Parkhead Forge, Rolling Mills,  
and Steel Works.

Glasgow: 17<sup>th</sup> Mar 1894

*Name Earle Shipby & Co Ltd*

*Bought of William Beardmore & Co*

*Manufacturers of Steel Plates Bars & Rivets (Siemens Process) & Iron Plates Bars & Rivets for Ships, Boilers, &c. & Marine Engine Forgings of all descriptions.*  
*Iron & Steel Plates flanged for Boiler Fronts &c.*



SHIP  
STEEL

BOILER  
STEEL

*386*  
*FF 1 SS 849 8.6 3/4 x 81 x 1 1/16 14 1 20*

*Perck 1731 to  
dry pool Sm Hull*  
*6/11*

*C. J. Hindoch*  
*Superior to Lloyd's Register*  
*19/3/94*

Lloyd's Register  
Foundation

HUL 408-0332